

Date: **28/06/13**Callsign: **Sword 2-1**

ATO Syria

Mission# 0618	Step 11:00Z	Startup 12:05Z	Takeoff 12:15Z
TGT Area Deir ez-Zor TOT 12:45 ZULU	Weather 36°C Scattered Clouds ~ 8000ft + 25000ft Winds 321 2 Kn @ GL Winds 067 4 Kn @ 6600 Winds 238 12 Kn @ 26000		

A/C#	Pilot	Spot
942	Forrest - Sword 2-1	8
966	Bug- Sword 2-2	12

Loadout							Gun - SAPHEI			
9	8	7	6	5R	5	5L	4	3	2	1
120C	9M	2* AGM 65D	Fuel	TGP	Fuel		Fuel	2* GBU 12	9M	120C
Fuel 14,118 lb					Gross Weight 41,524 lb					

60 Chaff**60 Flares**

Date: 28/06/13

Callsign: **Sword 2-1**

ATO Syria

Function	Callsign	Freq	
ABCCC	Sentinel	236.800	
Rivet Joint	Vacuum	293.400	
AWACS West	Darkstar	287.625	
AWACS East	Magic	283.150	
AAR West	Arco	308.200	74 X
AAR North	Texaco	354.600	66 X
AAR East	Shell	331.800	89 Y

H4 Airbase		COMM 1 UHF		COMM 2 VHF
Ground	116.350	Gamesmaster	1	H4 Ground
Tower	117.500	Sentinel	2	H4 Tower
Depart	117.250	Vacuum	3	H4 Departure
Approach	118.100	Darkstar	4	H4 Approach
Arrival	118.600	Magic	5	H4 Arrival
Emrg'cy	126.700	Arco	6	H4 Emergency
TACAN	125 X	Shell	7	Sword
		Texaco	8	Green 1
		Sandy	9	Green 2
		NOT IN USE	10	Red 1
		Gold 1	11	Red 2
		Gold 2	12	Red 3
		Gold 3	13	Cobalt 1
		Silver 1	14	Cobalt 2
		Silver 2	15	Yellow 1
		Orange 1	16	Yellow 2
		Orange 2	17	Indigo 1
		NOT IN USE	18	Indigo 2
		NOT IN USE	19	Magenta 1
		NOT IN USE	20	Magenta 2

Sword 140.6**Assault Force (Gold 1)****318.2****Whiplash (SOF)****Angel (UH-60)****Fury (AH-64)**

Date: 28/06/13

Callsign: Sword 2-1

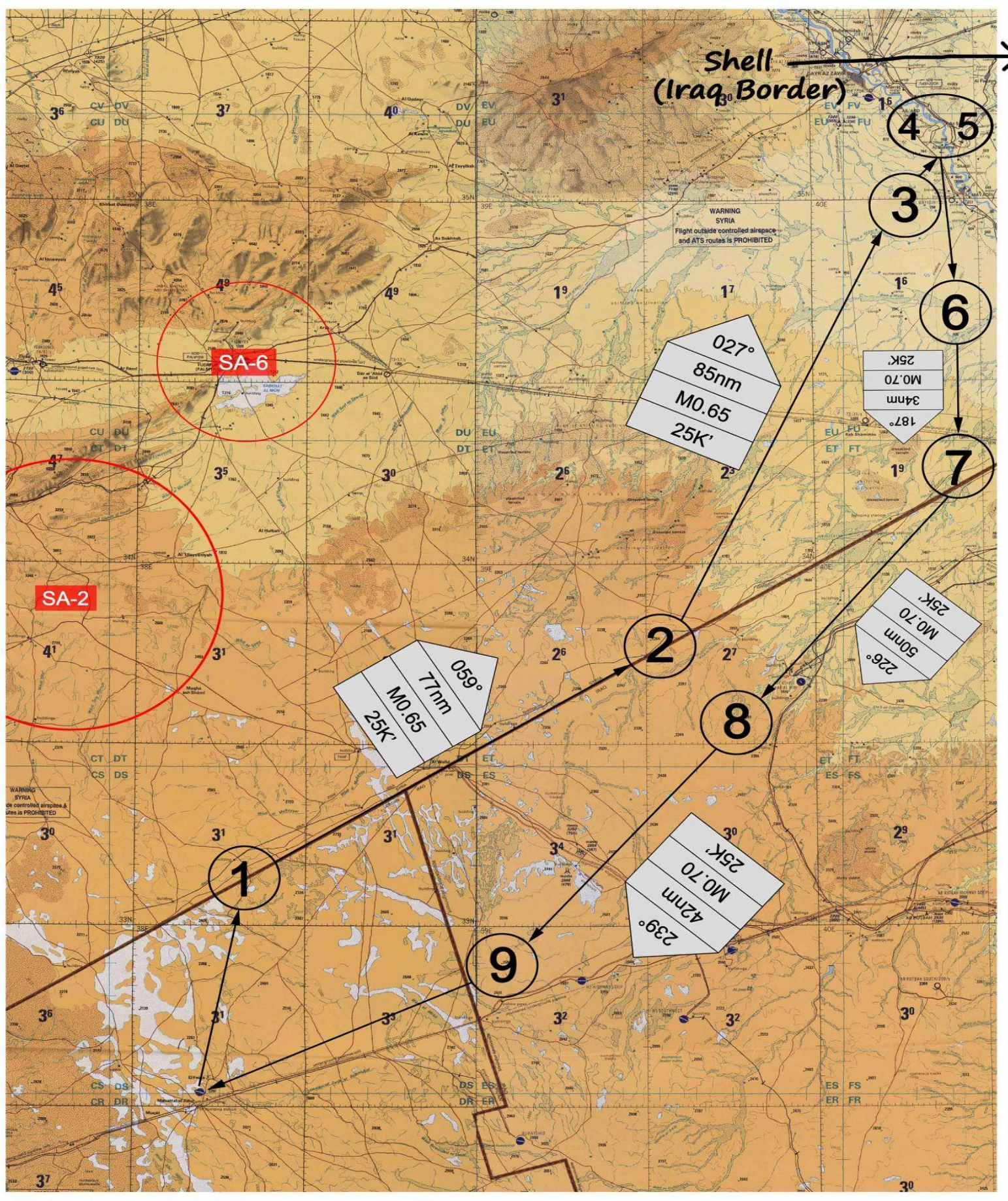
ATO Syria

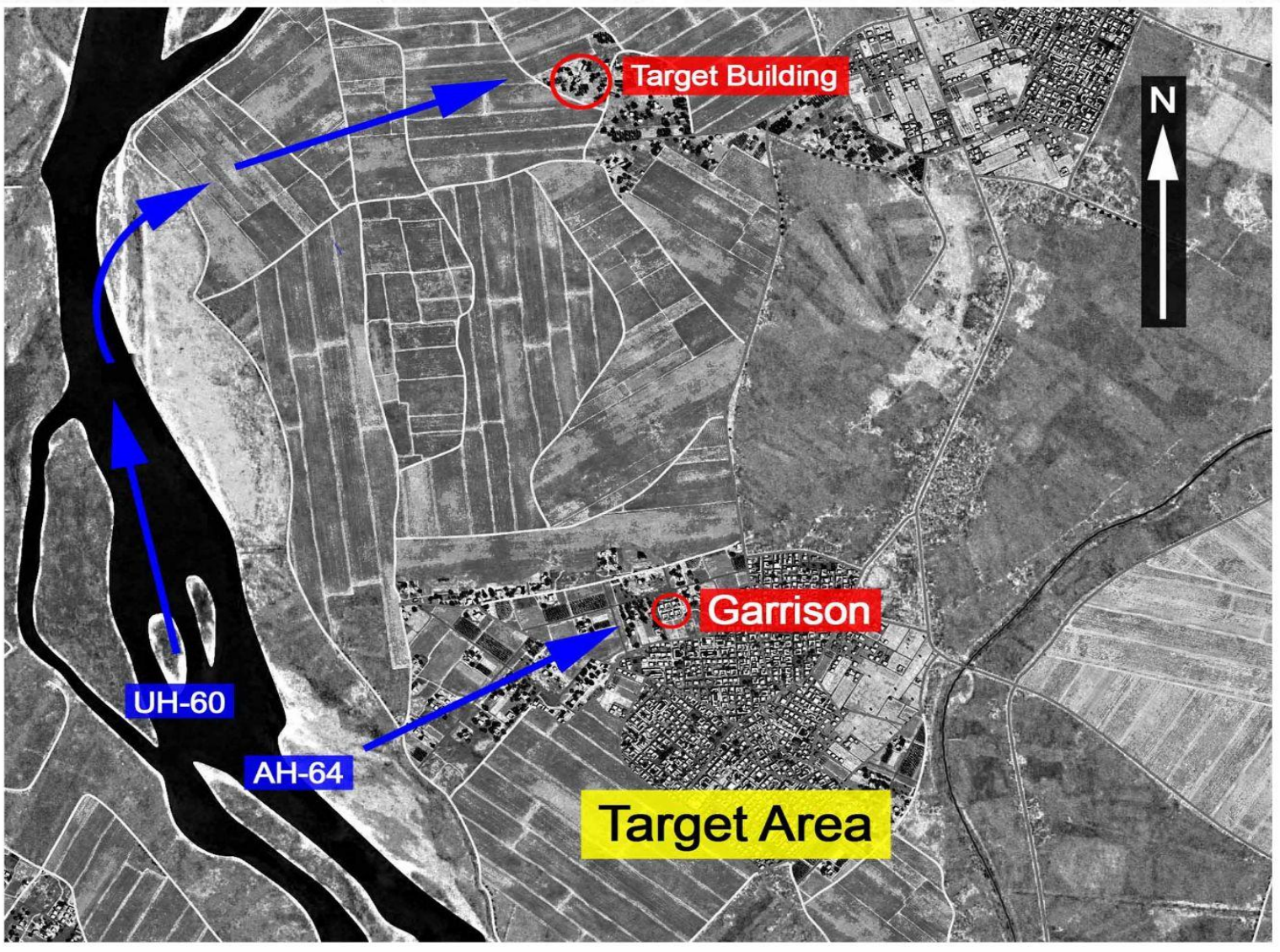
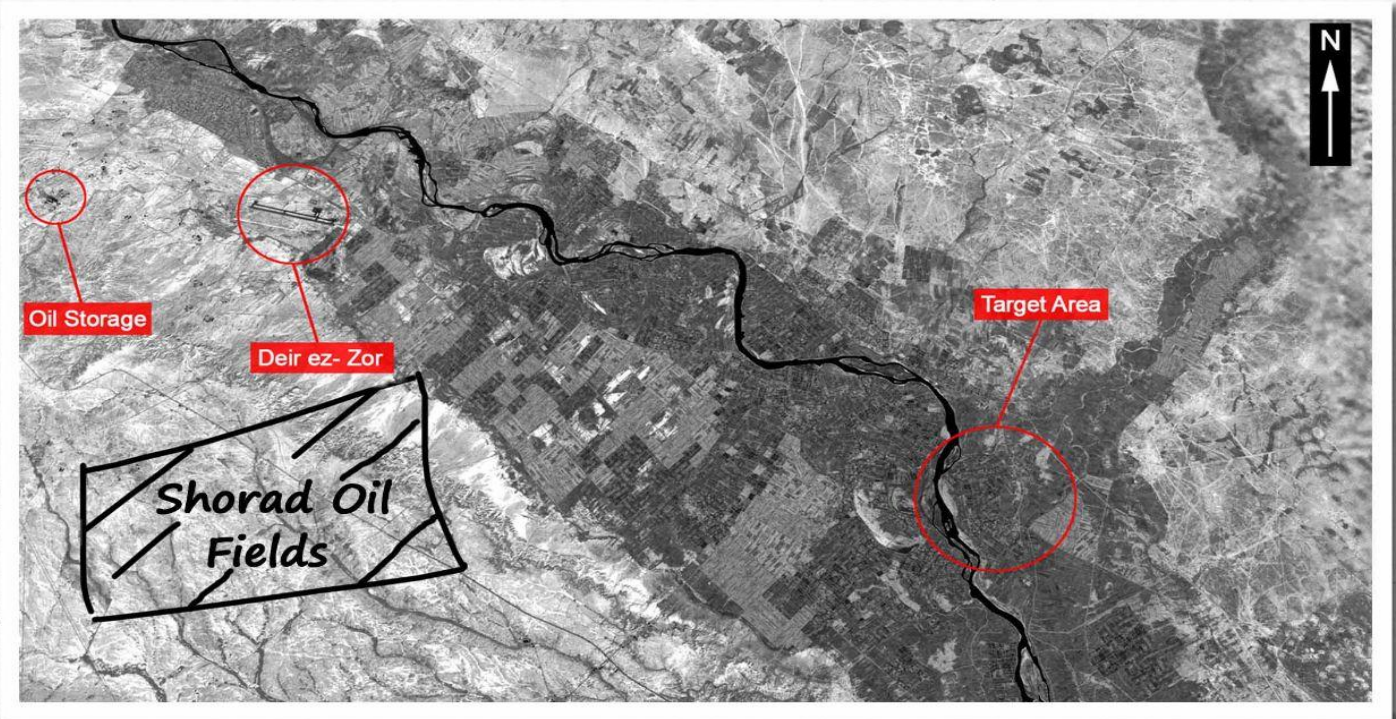
Flight Plan	WP	Fuel Plan
Syrian Border - 20K'	1	12268 lb
Turn North - MO.65, 25K'	2	11113 lb
IP - MO.65, 25K'	3	9838 lb
Garrison	4	
Target Building	5	
Egress - MO.7, 25k'	6	4458 lb
MO.7, 25k'	7	4118 lb
MO.7, 25k'	8	3618 lb
Jordan - MO.7, 25K'	9	3198 lb
H4	12	

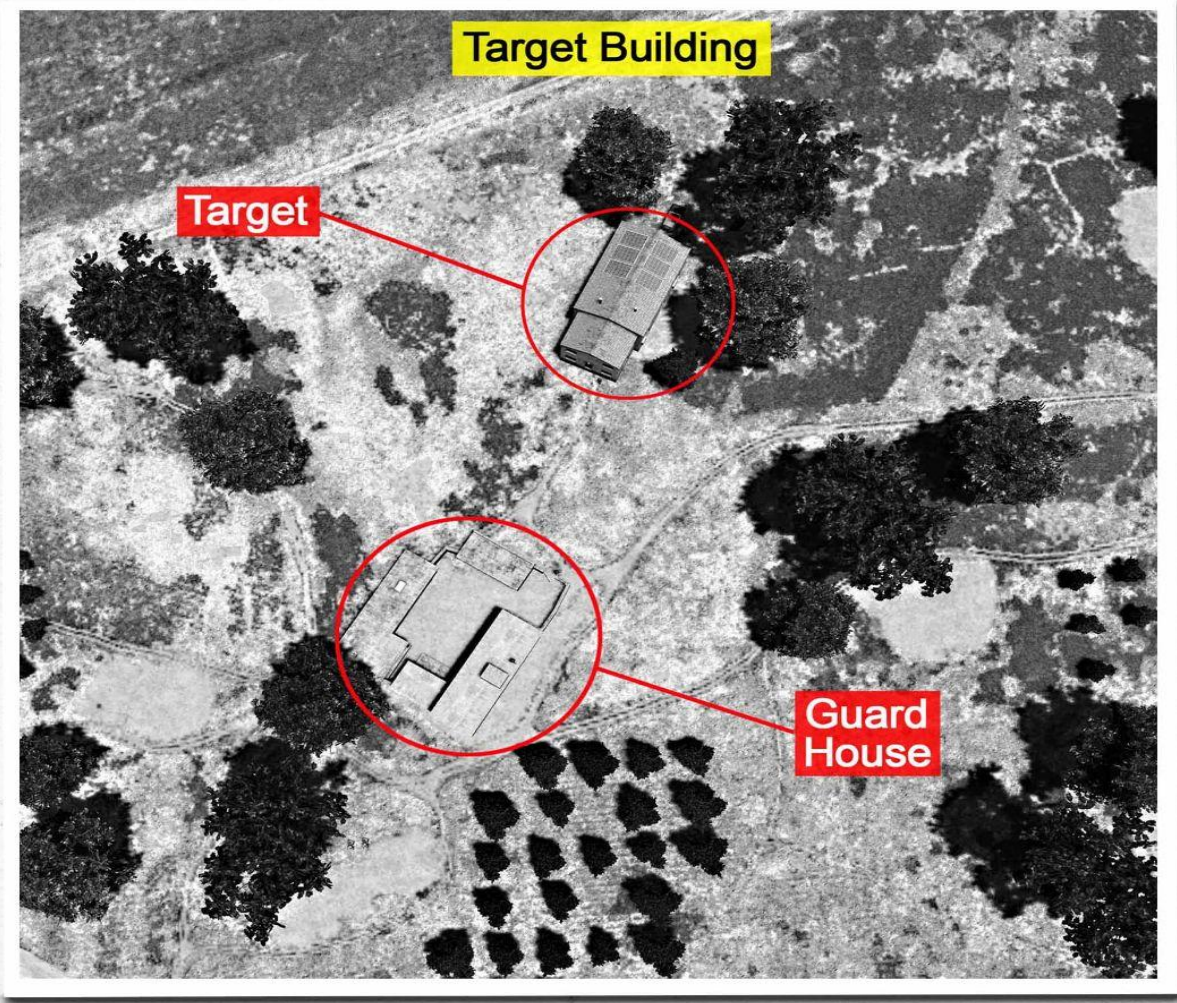
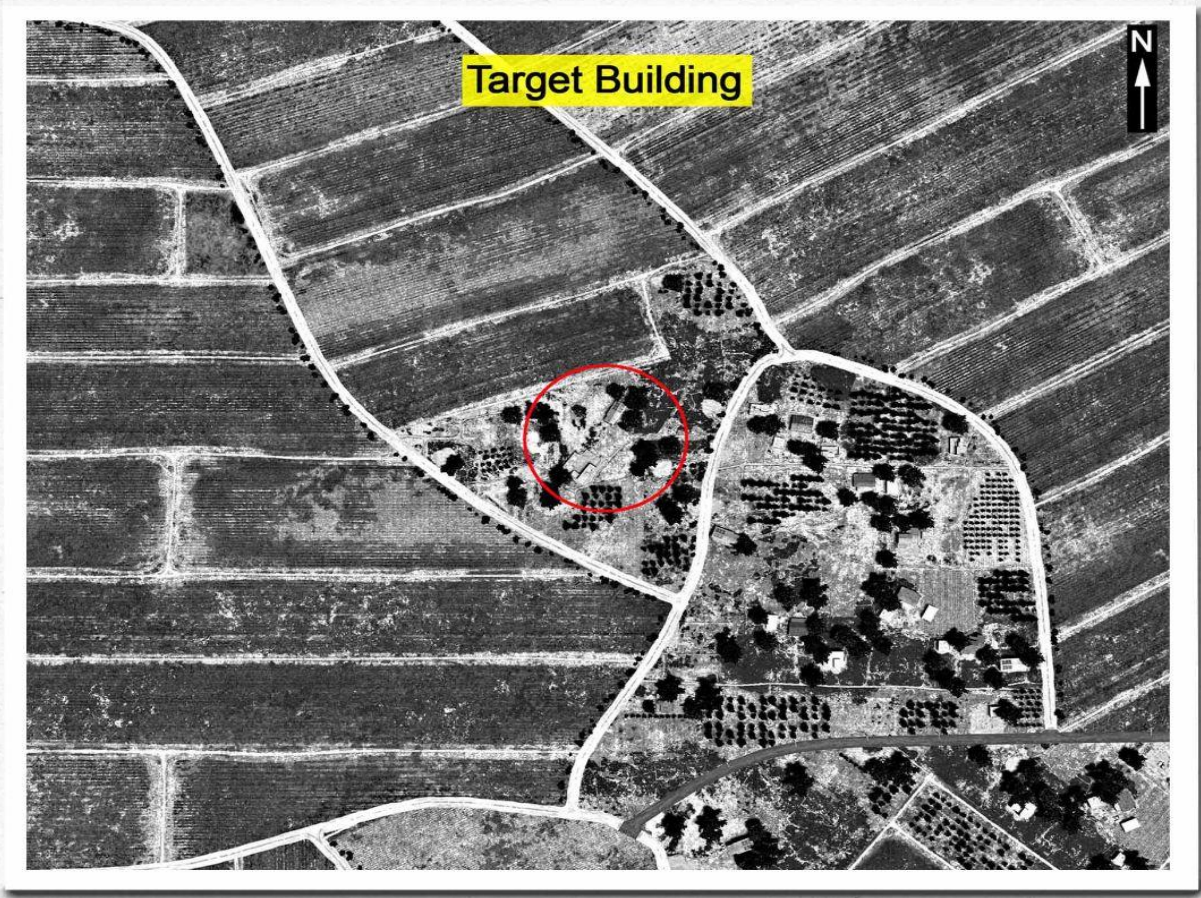
Bullseye: Portal N35°43.994' E 037°06.282' Bingo 4738 lb

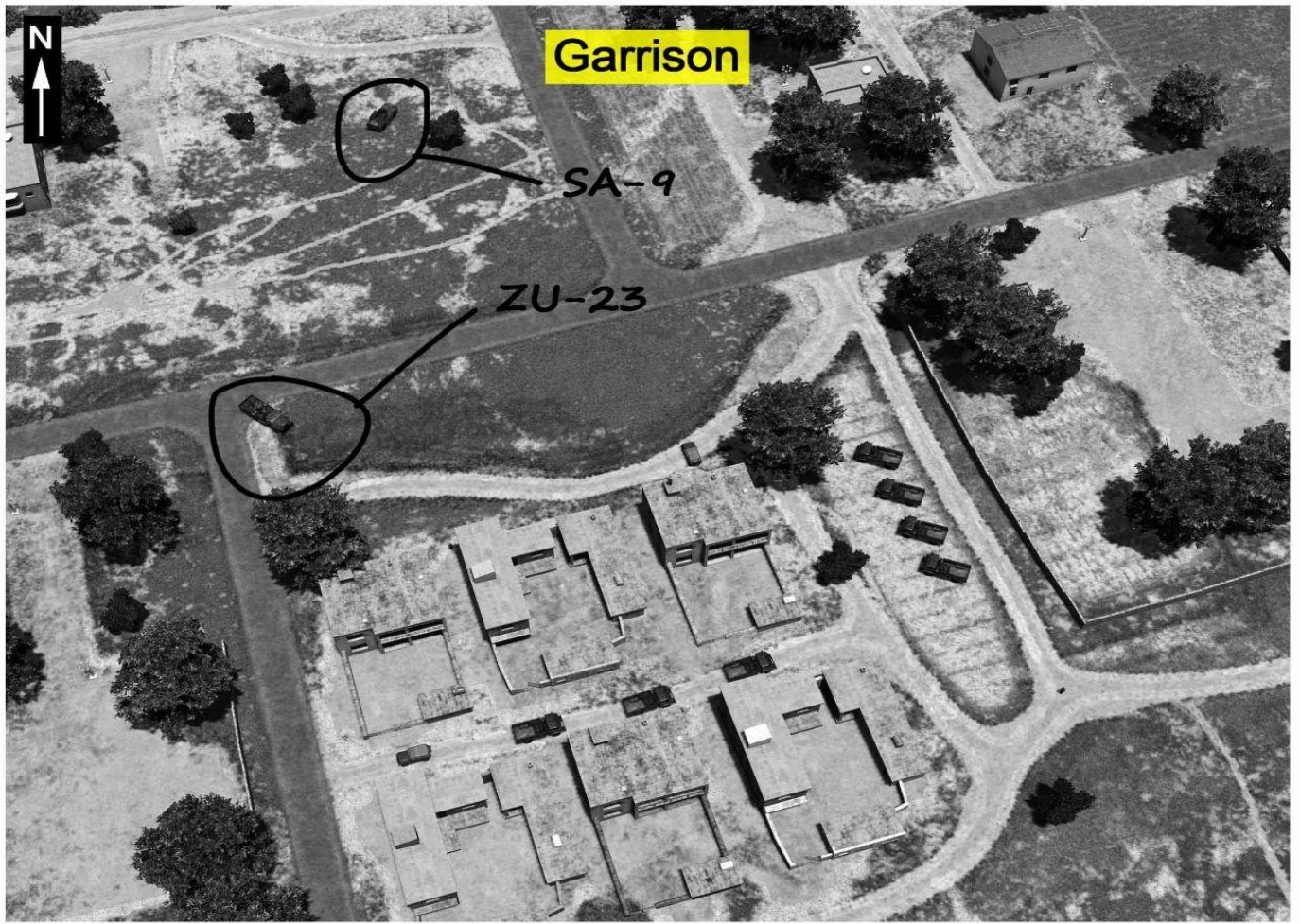
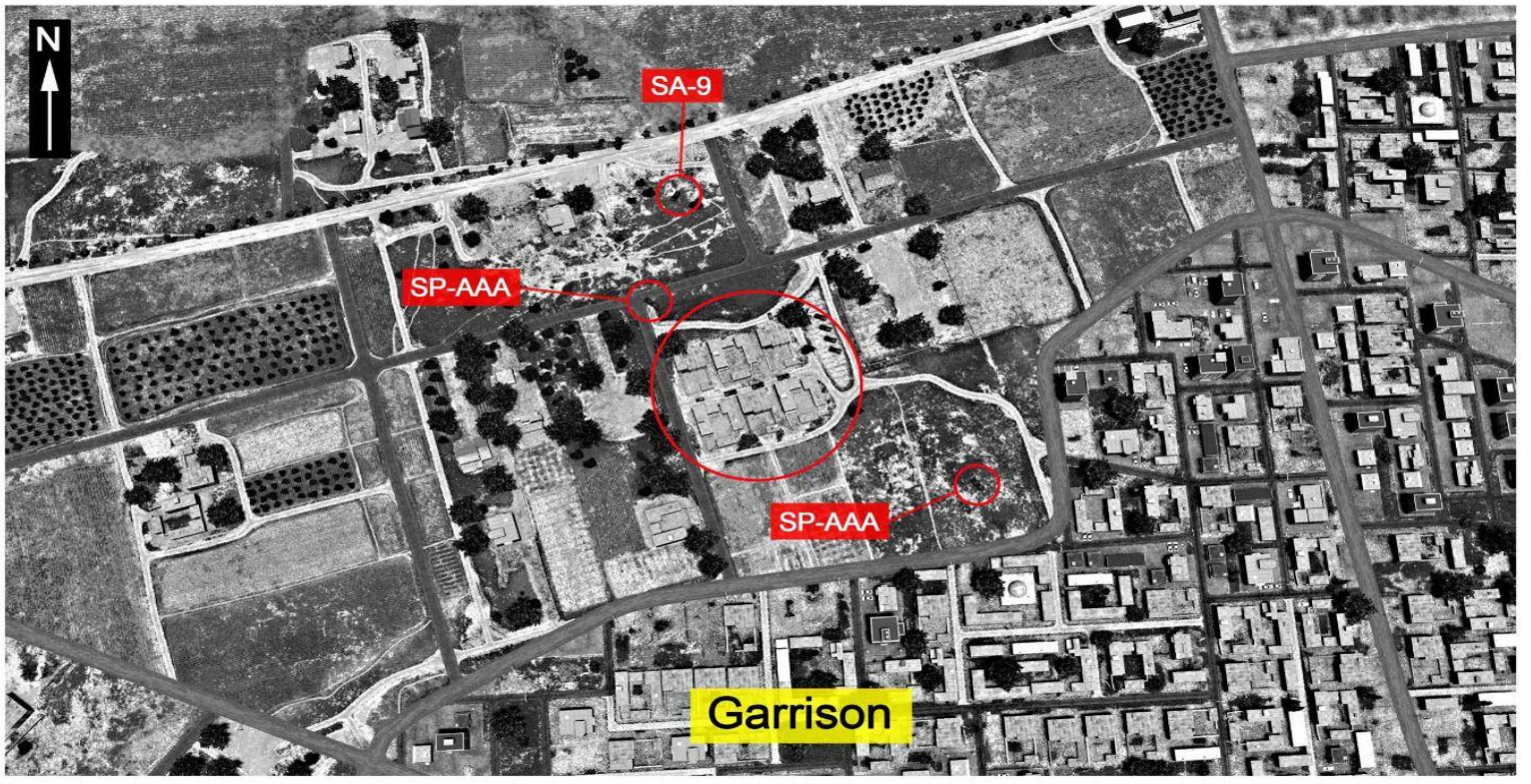
Approach Alpha - WP11

Approach Bravo - WP10









Date: 28/06/13

Callsign: Sword 2-1

ATO Syria

ZU-23: Engagement range = 2.5nm, Max Alt = 7,000 ft

ZU-57 / S-60: Engagement range = 3nm

Max Alt = 20k ft

MANPAD / IR Missile: Engagement range = 3nm

Max Alt = 12k ft