

OPERATION RAPID EAGLE 11/10/11

Flight:

Pilot	Call Sign	Side #	Freq	Role	T/O Time
Capt Mickleson	Hellcat 1-1	01	260	Training	14:45
Lt. Meyer	Hellcat 1-2	05	260	Training	14:40

Loadout:

7 6 5 4B 4A 3 2 1

Station 7	Mk-81	Station 4B	GAU-12	Station 3	7 x M-151 HE
Station 6	Mk-81	Ammo	SAPHEI-T	Station 2	Mk-81
Station 5	7 x M-151 HE	Station 4A		Station 1	Mk-81

Fuel	7,758 LB
Gross Weight	24,731 LB

Countermeasure Bins:

Top Front Left	30 Chaff
Top Front Right	30 Chaff
Top Rear Left	30 Flare
Top Rear Right	30 Flare
Bottom Left	30 Flare
Bottom Right	30 Flare

Weather:

Clouds	Wind	Temperature	Precipitation
Scattered 16,000 feet	191 @ 5Kn GL 156 @ 8Kn 6600 ft 174 @ 12Kn 26000 ft	23°C	None

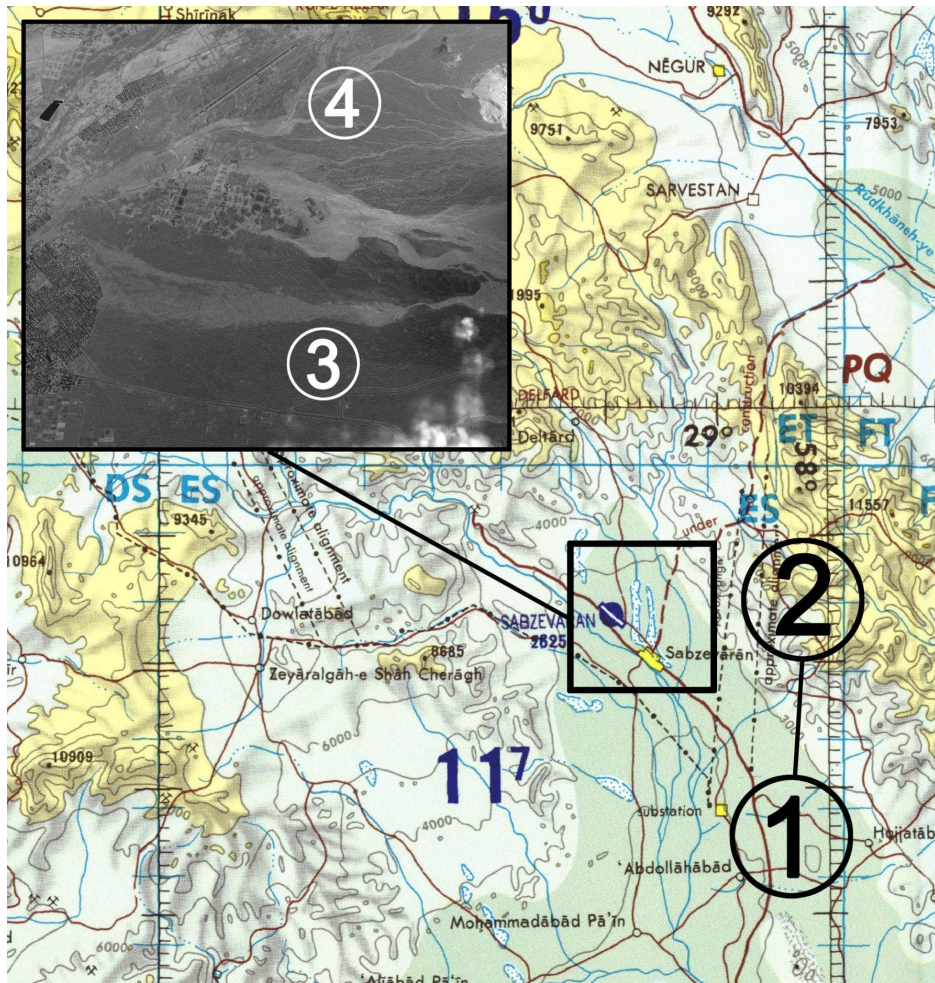
OPERATION RAPID EAGLE 11/10/11

Mission Support:

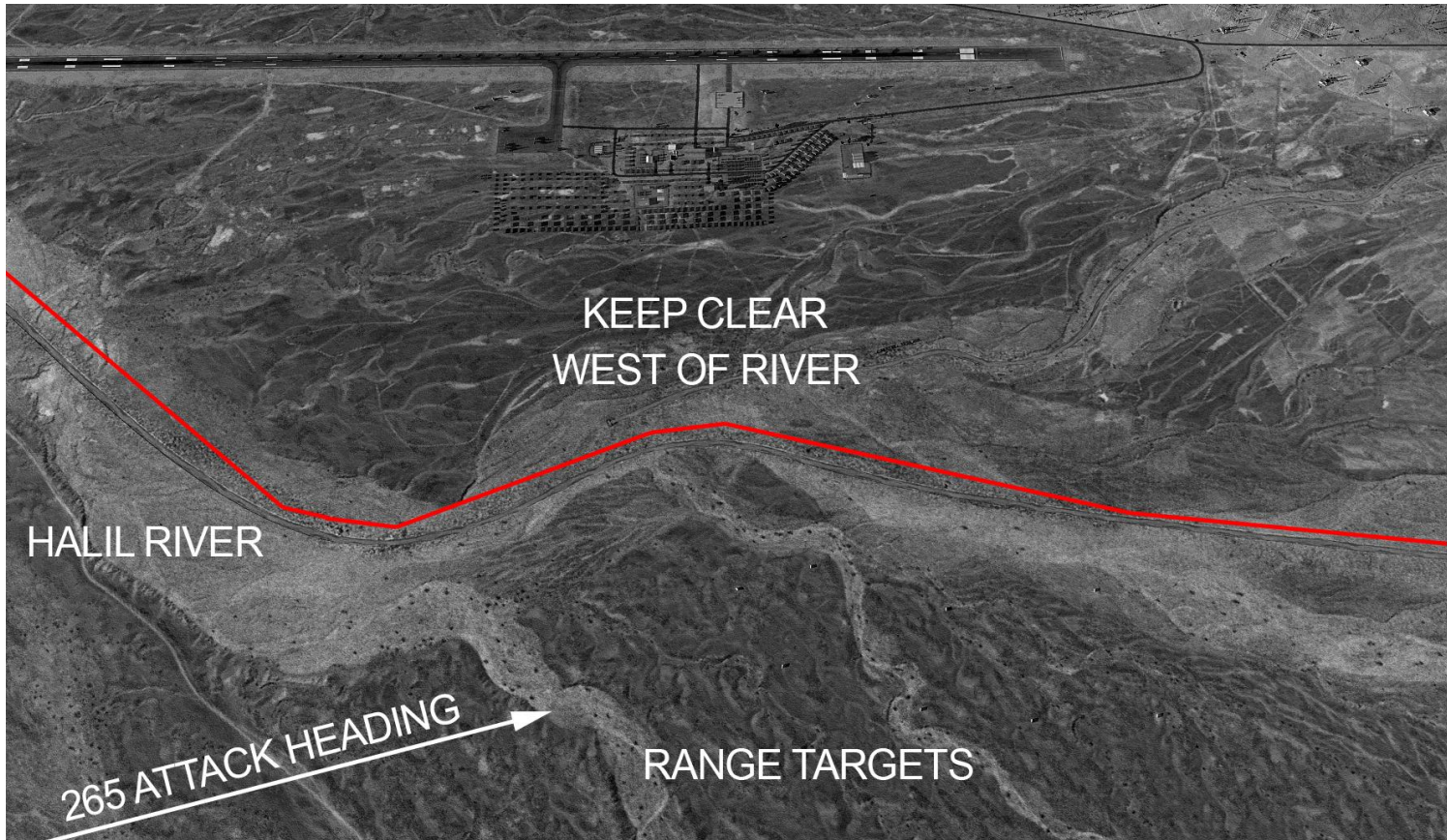
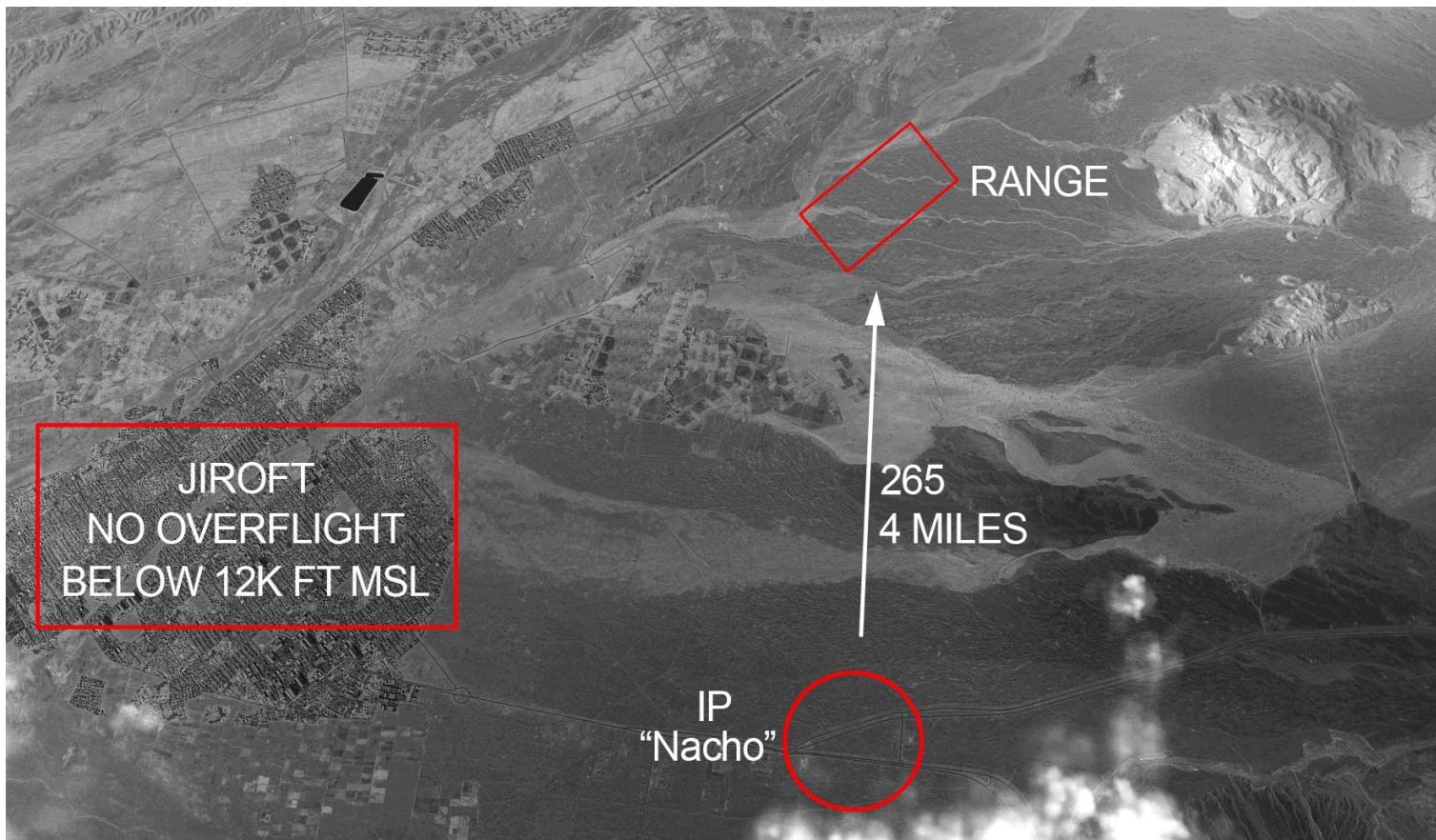
Call Sign	Type	Frequency	Role	Notes
Chieftain	C-130	291.5	DASC	
Sandman 3-1	Ground	233.5	FAC	

Flight Plan:

Waypoint	Alt (Ft MSL)	Notes
1	15,000	RV Flight, Range Check in
2	TBC	CAS Stack
3		IP
4		Range
Bingo	1800 lb	BULLS N29°30'55", E57°16 '24"



OPERATION RAPID EAGLE 11/10/11



OPERATION RAPID EAGLE 11/10/11**Radio Plan:**

Channel	Comm 1	Freq	Comm 2	Freq
1	Juliet Ground	141.0	Juliet Ground	141.0
2	Juliet Tower	141.5	Hellcat 1	260.0
3	Juliet Departure	142.25	Reaper	284.4
4	Juliet Arrival	142.6	Wolf 1	267.0
5	Juliet Emergency	143.1	SPARE	--
6	Chieftain	291.5	SPARE	--
7	Steel Rain	181.6	SPARE	--
8	Iceman	185.7	SPARE	--
9	Fixer	189.0	SPARE	--
10	Madman	193.2	Black	329.8
11	Sandman 3-1	233.5	White	266.8
12	SPARE	--	Red	312.0
13	SPARE	--	Orange	355.2
14	SPARE	--	Yellow	231.4
15	SPARE	--	Green	388.7
16	SPARE	--	Blue	251.5
17	SPARE	--	Indigo	363.4
18	SPARE	--	Violet	200.6
19	SPARE	--	Magenta	391.1
20	SPARE	--	Grey	241.3
21	SPARE	--	SPARE	--
22	SPARE	--	SPARE	--
23	SPARE	--	SPARE	--
24	SPARE	--	SPARE	--
25	SPARE	--	SPARE	--
26	SPARE	--	SPARE	--