

Date: 08/26/13

Callsign: Sword 2-1

ATO Syria

| | | | |
|---------------|-------------|----------------|----------------|
| Mission# 7698 | Step 12:30Z | Startup 13:20Z | Takeoff 13:30Z |
|---------------|-------------|----------------|----------------|

| | |
|--|--|
| TGT Area Kanakaner TOT 14:09Z | Weather 34°C Scattered ~ 10,000ft Winds 209 3 Kn @ GL Winds 211 12 Kn @ 6600 Winds 321 14 Kn @ 26000 |
|--|--|

| A/C# | Pilot | TACAN | Spot |
|------|---------------------|-------|------|
| 942 | Forrest - Sword 2-1 | | 9 |
| 917 | Rotor - Sword 2-2 | 39X | 13 |
| 966 | Bug - Sword 2-3 | 35X | 14 |
| 851 | Boomer - Sword 2-4 | 32X | 15 |

Loadout

| 9 | 8 | 7 | 6 | 5R | 5 | 5L | 4 | 3 | 2 | 1 |
|------|----|--------|------|-----|----------|-----|------|--------|----|------|
| 120C | 9X | CBU 87 | Fuel | TGP | ALQ 184L | HTS | Fuel | CBU 87 | 9X | 120C |

Chaff / Flare 60 Chaff / 60 Flares Gun SAPHEI

Fuel 12,113 lb Gross Weight 39,017 lb

Push time 14:02 Z

Date: **08/26/13**Callsign: **Sword 2-1**

ATO Syria

| Function | Callsign | Freq | |
|-------------|----------|---------|------|
| ABCCC | Sentinel | 236.800 | |
| Rivet Joint | Vacuum | 293.400 | |
| AWACS West | Darkstar | 287.600 | |
| AWACS East | Magic | 283.150 | |
| AAR West | Arco | 308.200 | 74 X |
| AAR North | Texaco | 354.600 | 66 X |
| AAR East | Shell | 331.800 | 89 Y |

| AKROTIRI ATC | COMM 1 UHF | | COMM 2 VHF |
|-------------------|------------------|----|----------------------|
| Ground 122.100 | Darkstar | 1 | Akr Ground |
| Tower 130.100 | Magic | 2 | Akr Tower |
| Dep' ture 124.200 | Arco | 3 | Akr Departure |
| Appr' ch 123.600 | Shell | 4 | Akr Approach |
| Emerg' cy 133.300 | Texaco | 5 | Akr Emergency |
| ATIS 125.000 | Sentinel | 6 | Akr ATIS |
| TACAN 107X | Vacuum | 7 | Sword 1 |
| Sword 1 | Buzzard 1 | 8 | Sword 2 |
| VHF 140.4 | Spartan 3 | 9 | Bulldog 6 |
| Sword 2 | Strike | 10 | Red 1 |
| VHF 141.6 | Magenta 1 | 11 | Red 2 |
| Buzzard 1 | Magenta 2 | 12 | Black 1 |
| UHF 300.2 | Blue 1 | 13 | Black 2 |
| Spartan 3 | Blue 2 | 14 | Black 3 |
| UHF 280.9 | Yellow 1 | 15 | Black 4 |
| Bulldog 6 | Yellow 2 | 16 | White 1 |
| VHF 152.0 | Green 1 | 17 | White 2 |
| Strike | Green 2 | 18 | Purple 1 |
| UHF 264.6 | Indigo 1 | 19 | Purple 2 |
| | Indigo 2 | 20 | Purple 3 |
| | | | |

Date: 08/26/13

Callsign: Sword 2-1

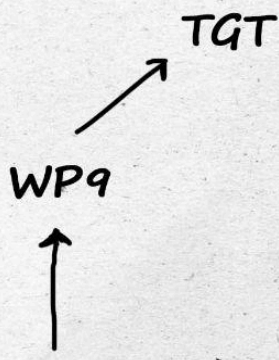
ATO Syria

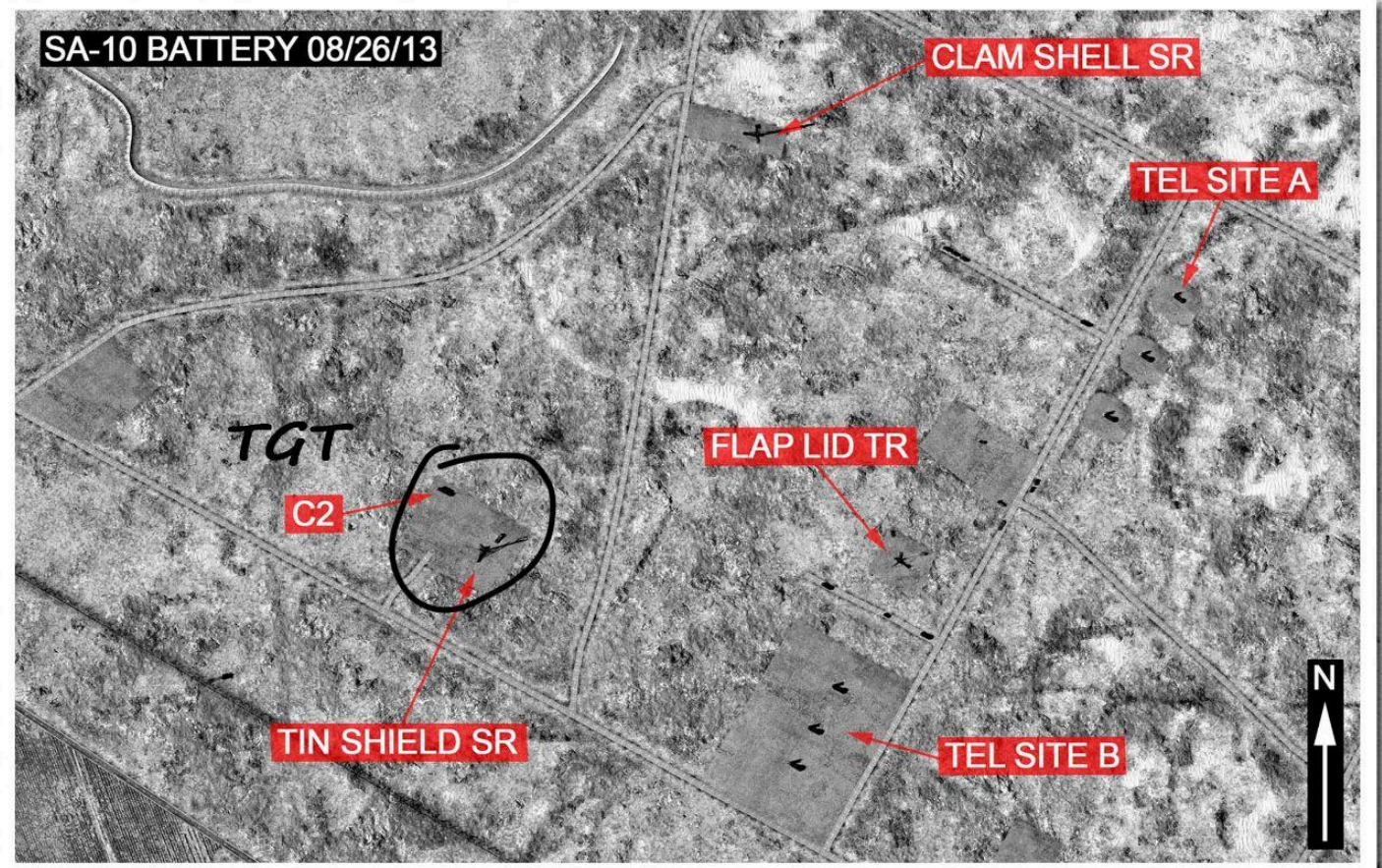
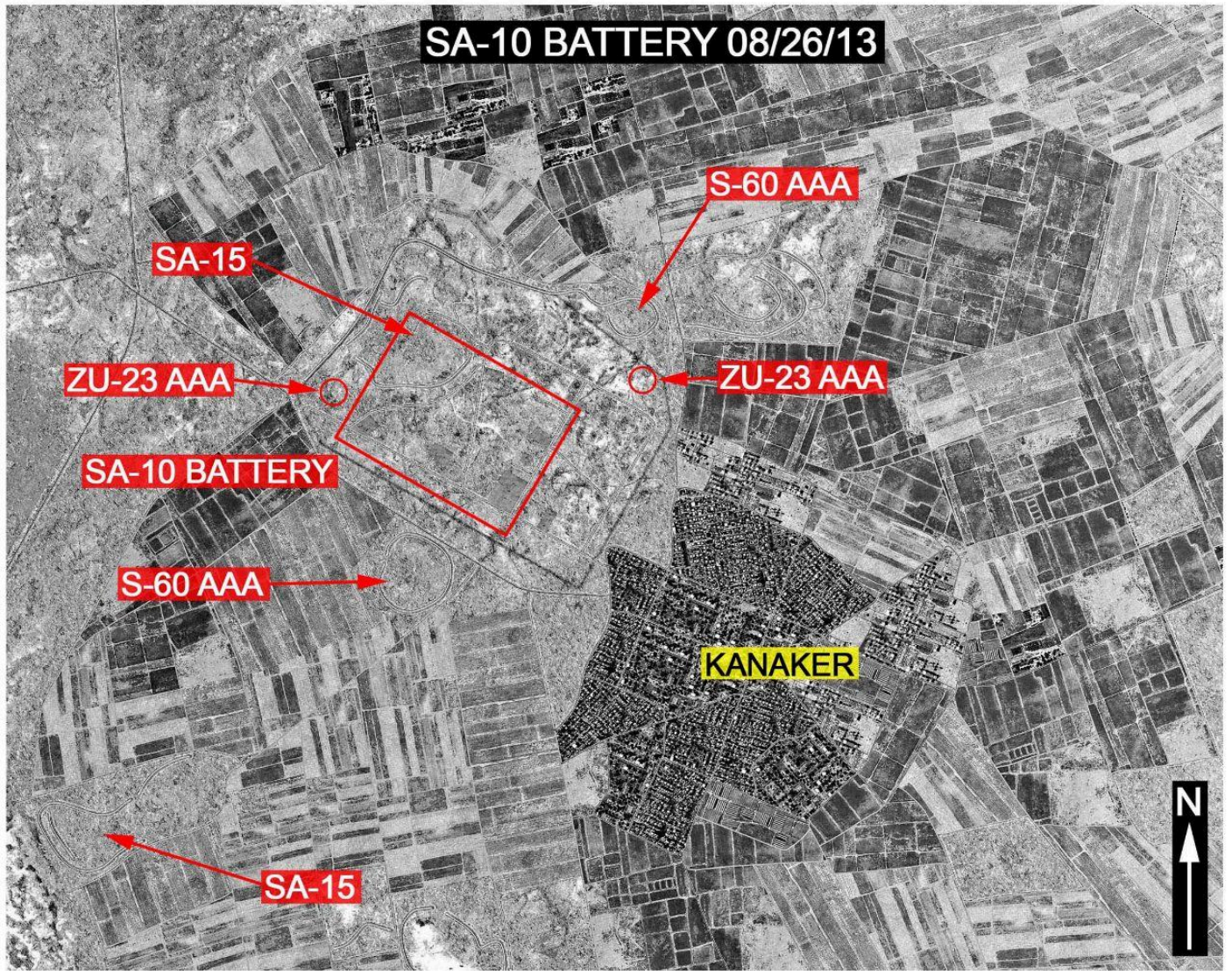
| Flight Plan | WP | Fuel Plan |
|--------------------------|----|-----------|
| MEZUS | 1 | |
| ANANE | 2 | |
| IREFA | 3 | |
| 25K FT, MO.7 SPARTAN | 4 | 9,350 lb |
| 25 FT, MO.7 BULLDOG | 5 | 8,802 lb |
| 5K FT PUSH 14:02 | 6 | 7,628 lb |
| IRBID - 250 AGL, MO.8 | 7 | 7,166 lb |
| TURN NORTH 250 AGL, MO.8 | 8 | 6,767 lb |
| AQRABAC - IP | 9 | 6,431 lb |
| TGT | 10 | 6,221 lb |
| EGRESS 15K FT, MO.75 | 11 | 2,588 lb |
| RALLY 14K FT | 12 | 3,133 lb |
| ** ISRAEL ANGELS 14 !! | ↓ | |
| 27K FT, MO.75 | 5 | 2,353 lb |
| | | |
| | | |
| | | |
| | | |
| | | |
| | | |

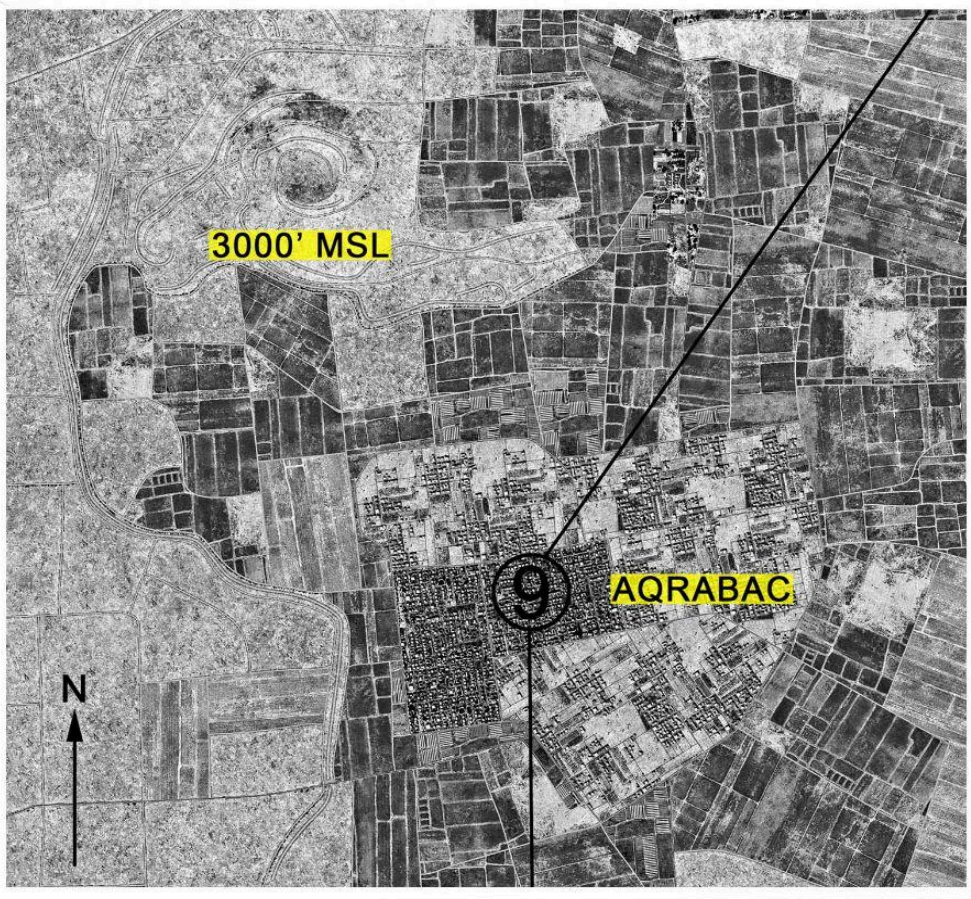
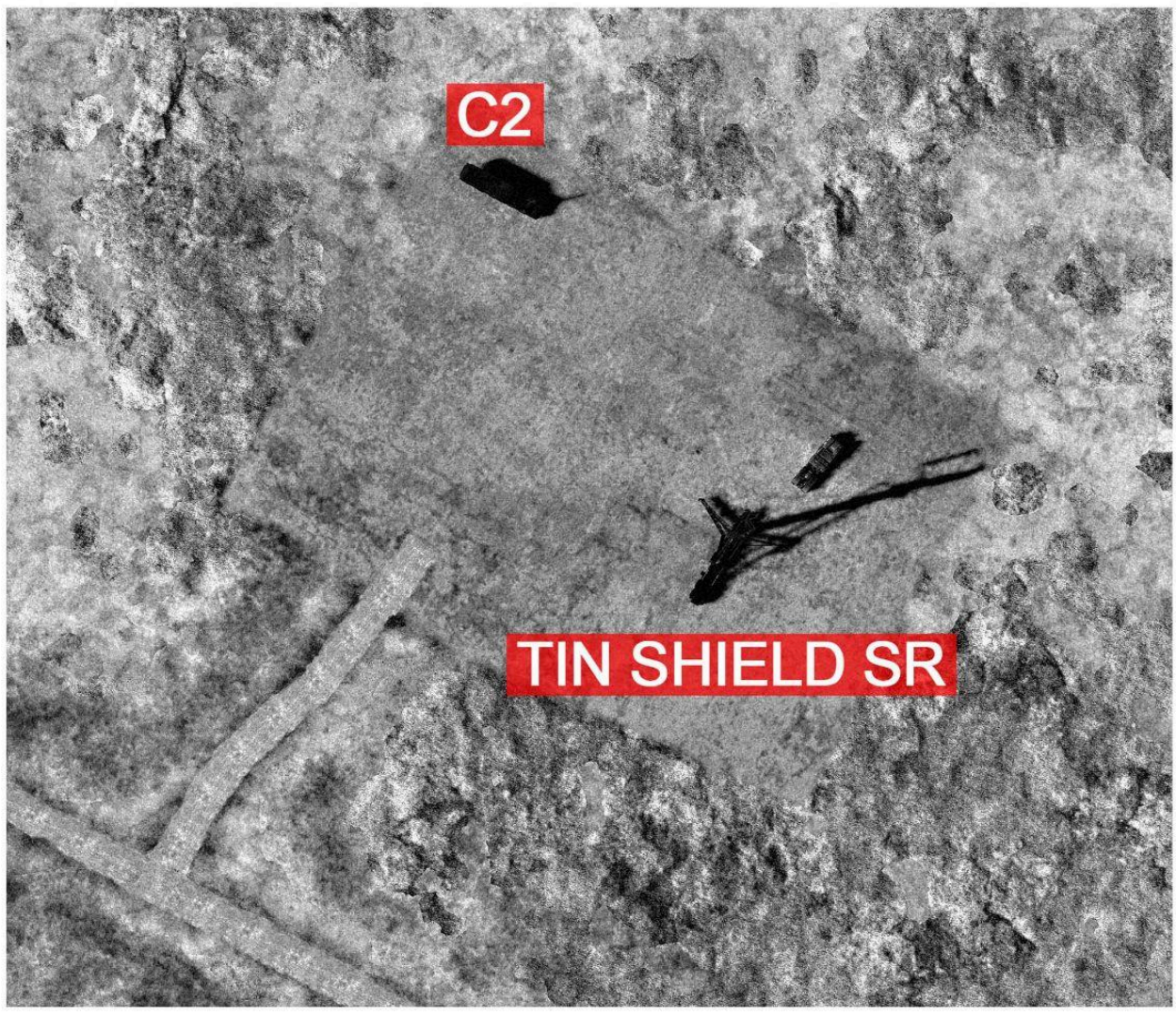
Bullseye: DIAP

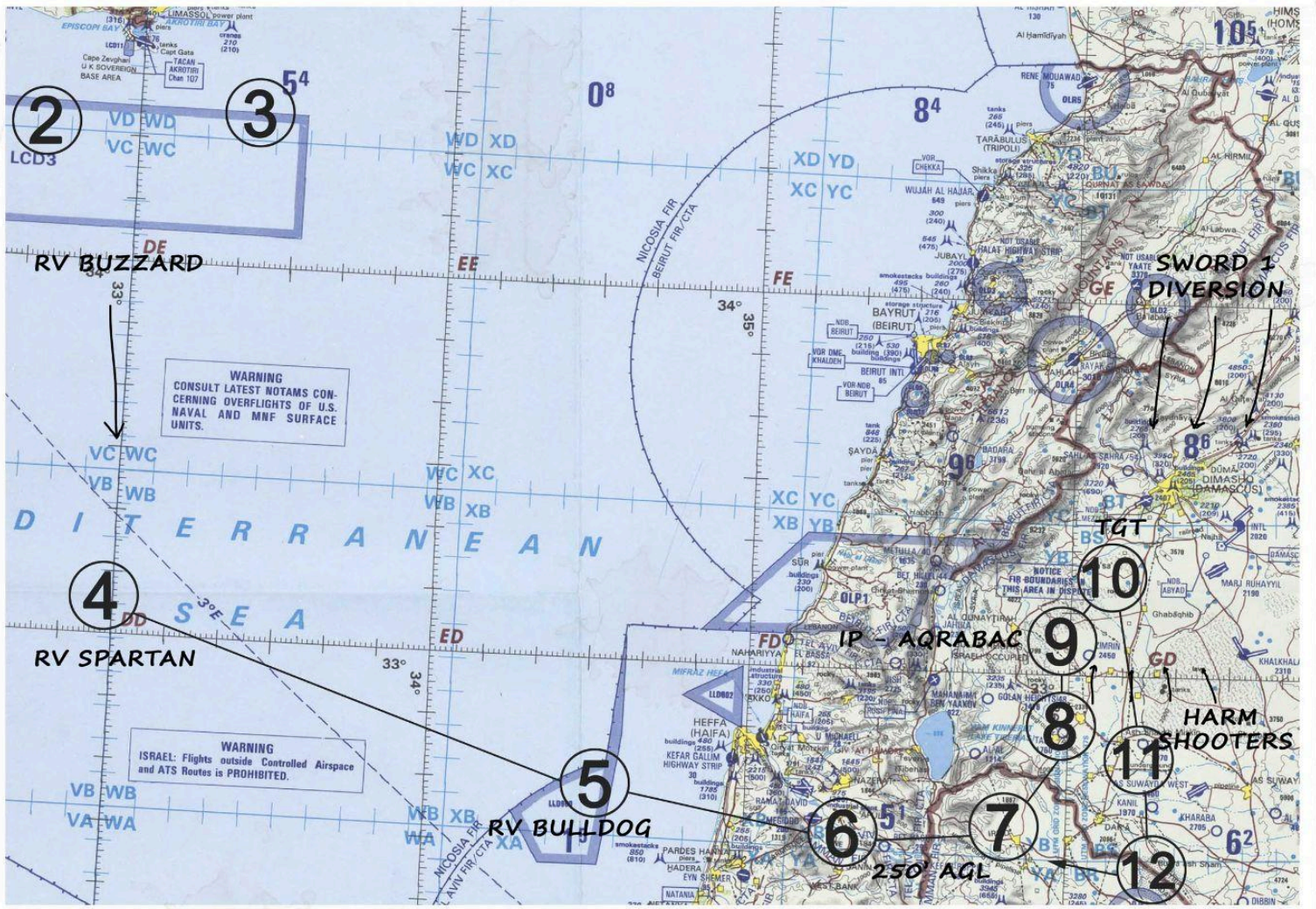
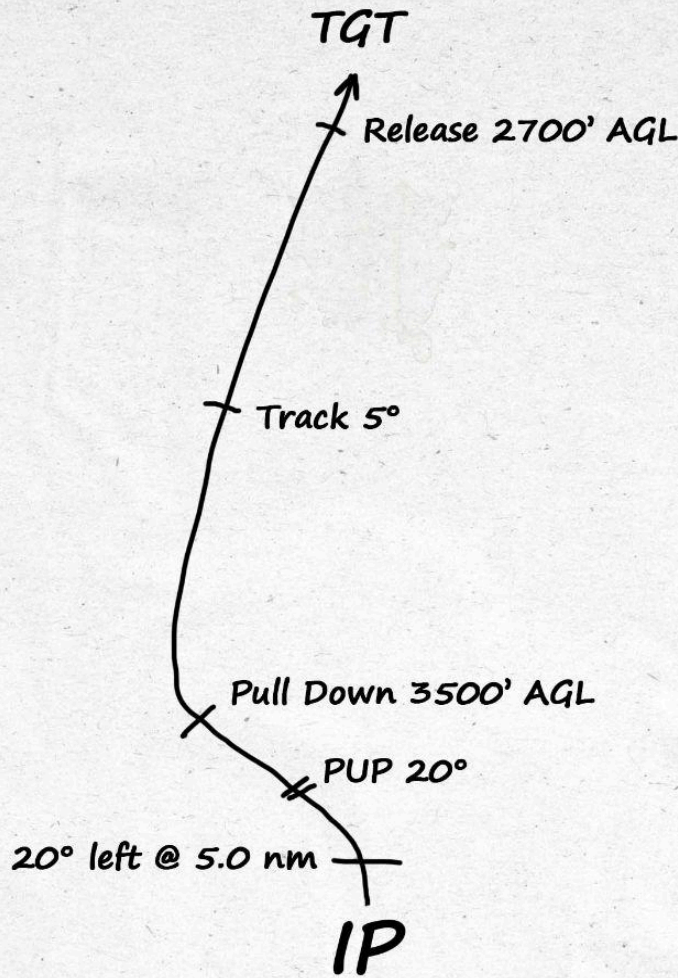
Bingo 3800 lb

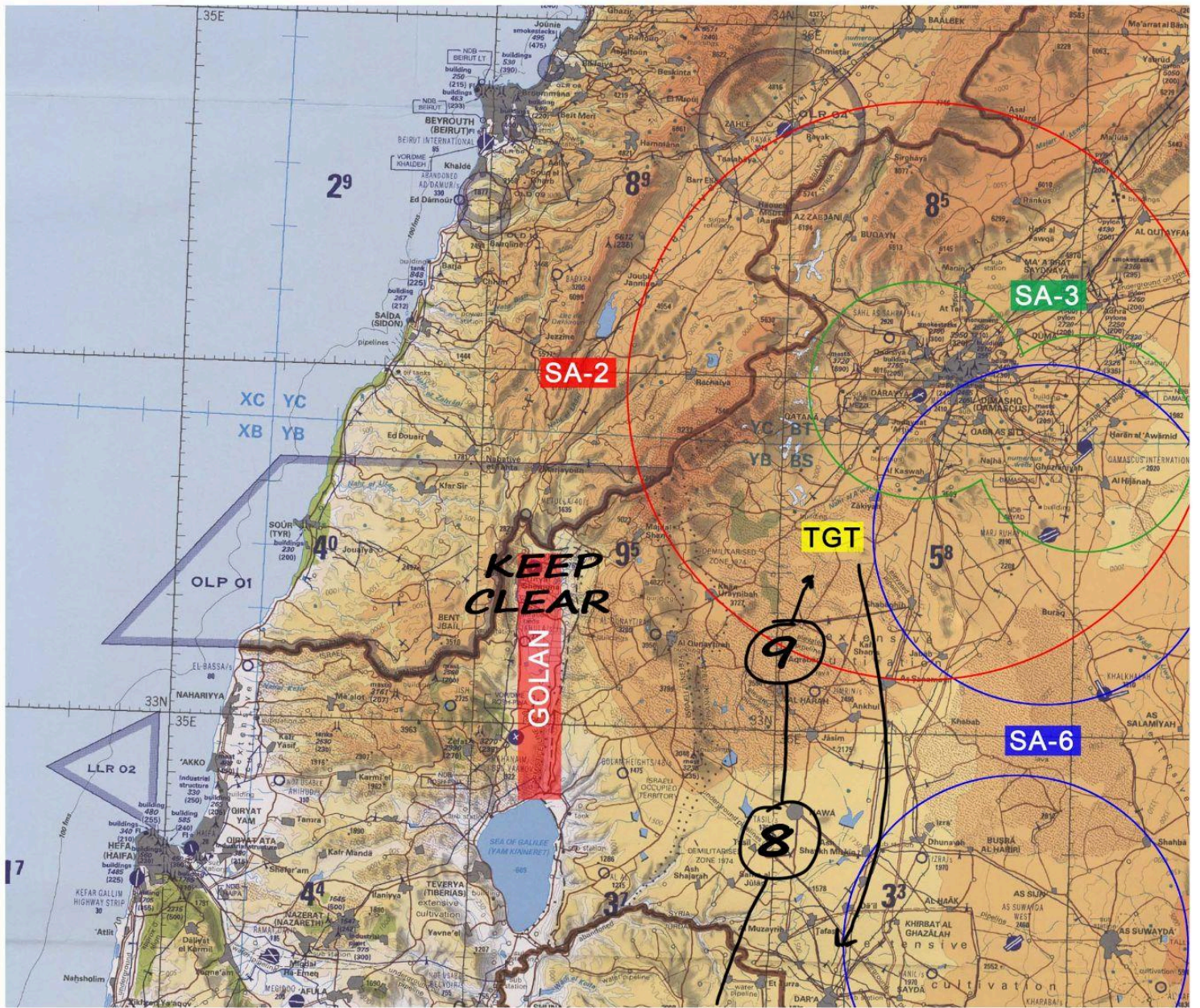
* DANGER *
 AVOID THE GOLAN HEIGHTS
 7 NM WEST OF WP 9!!











THREATS & CODES:

- SA-2: MEZ = 23nm, Max alt = 82,000 ft HAD Class 2
- SA-3: MEZ = 10nm, Max alt = 59,000 ft HAD Class 2
- SA-6: MEZ = 15nm, Max alt = 40,000 ft HAD Class 2
- SA-8: MEZ = 6nm, Max alt = 16,000 ft / 39,000 ft HAD Class 2
- SA-10: MEZ = 65nm, Max alt = 95,000 ft HAD Class 1
- SA-11: MEZ = 20nm, Max alt = 72,000 ft HAD Class 1
- SA-15: MEZ = 8nm, Max alt = 25,000 ft HAD Class 1
- MANPAD/SA-9: MEZ = 3nm, Max alt = 12,000 ft