

OPERATION RAPID EAGLE 11/18/11

Flight:

Pilot	Call Sign	Side #	Freq	Role	T/O Time	TOT	End Vul
Mike-Mike	Hellcat 1-1	105	260	CAS	06:20	--:--	--:--
Chief	Hellcat 1-2	053	260	CAS	06:20	--:--	--:--

Loadout:

7 6 5 4B 4A 3 2 1

Station 7	Mk-20	Station 4B	GAU-12	Station 3	AGM-65L
Station 6	Mk-20 x 2	Ammo	SAPHEI-T	Station 2	Mk-20 x 2
Station 5	AGM-65L	Station 4A	TARGET POD	Station 1	Mk-20

Fuel	7,758 LB
Gross Weight	28,382 LB

Countermeasure Bins:

Top Front Left	30 CHAFF
Top Front Right	30 CHAFF
Top Rear Left	30 FLARE
Top Rear Right	30 FLARE
Bottom Left	30 FLARE
Bottom Right	30 FLARE

Weather:

Clouds	Wind	Temperature	Precipitation
Scattered - Broken 14,000 ft	308 @ 2Kn GL 133 @ 6Kn 6600 ft 218 @ 10Kn 26000 ft	15°C	N/A

OPERATION RAPID EAGLE 11/18/11**Mission Support:**

Call Sign	Type	Frequency	Role	Notes
Cyclops 3	UAV	241.7	ISR	
Wolf 4-2	F/A-18C	267	FAC(A)	
Reaper 3-1	F/A-18C	284.4	SEAD	
Reaper 3-2	F/A-18C	289.9	SEAD	
Reaper 4-1	F/A-18C	315.2	CAP	
Spartan 3	EA-18G	351.6	EW	

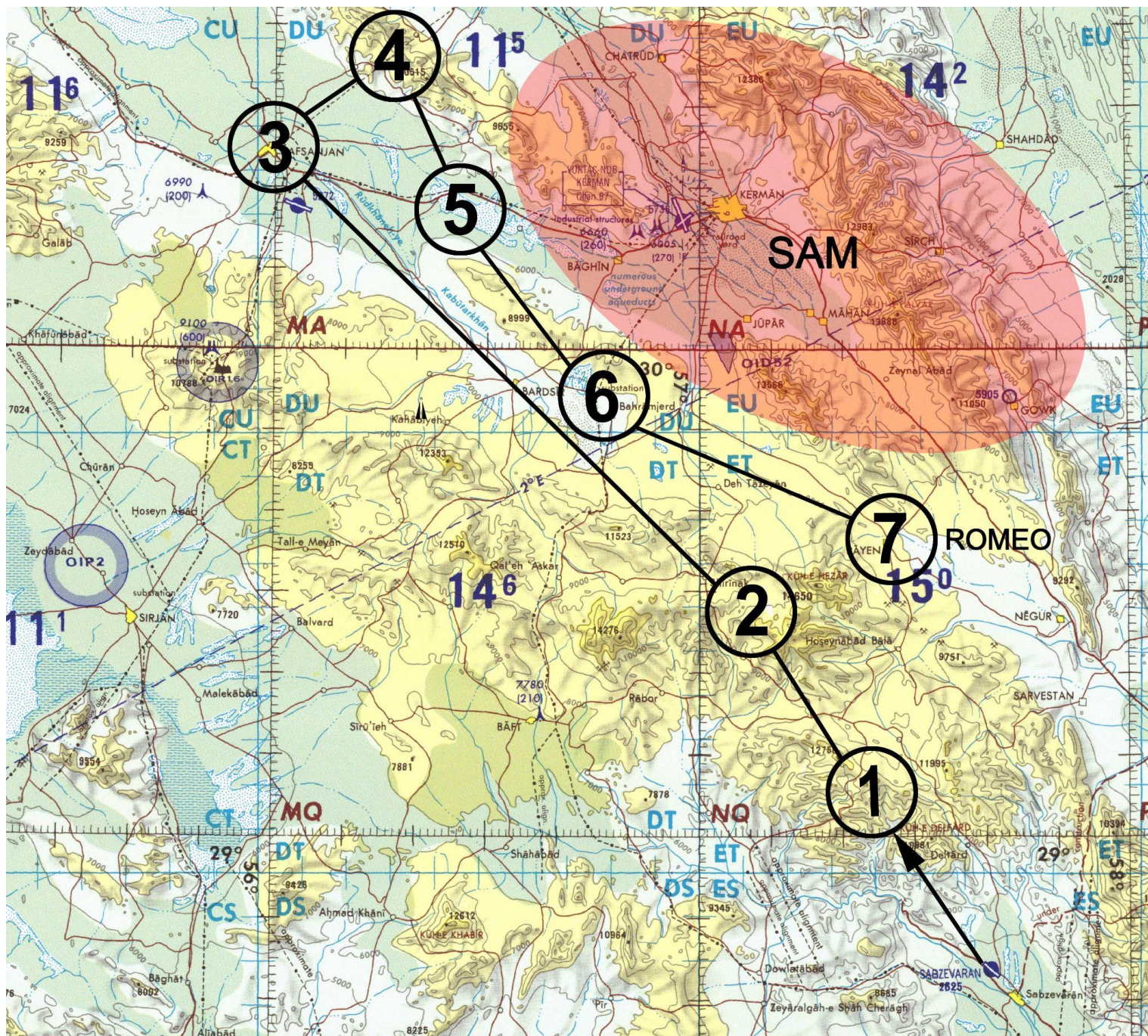
Mission:

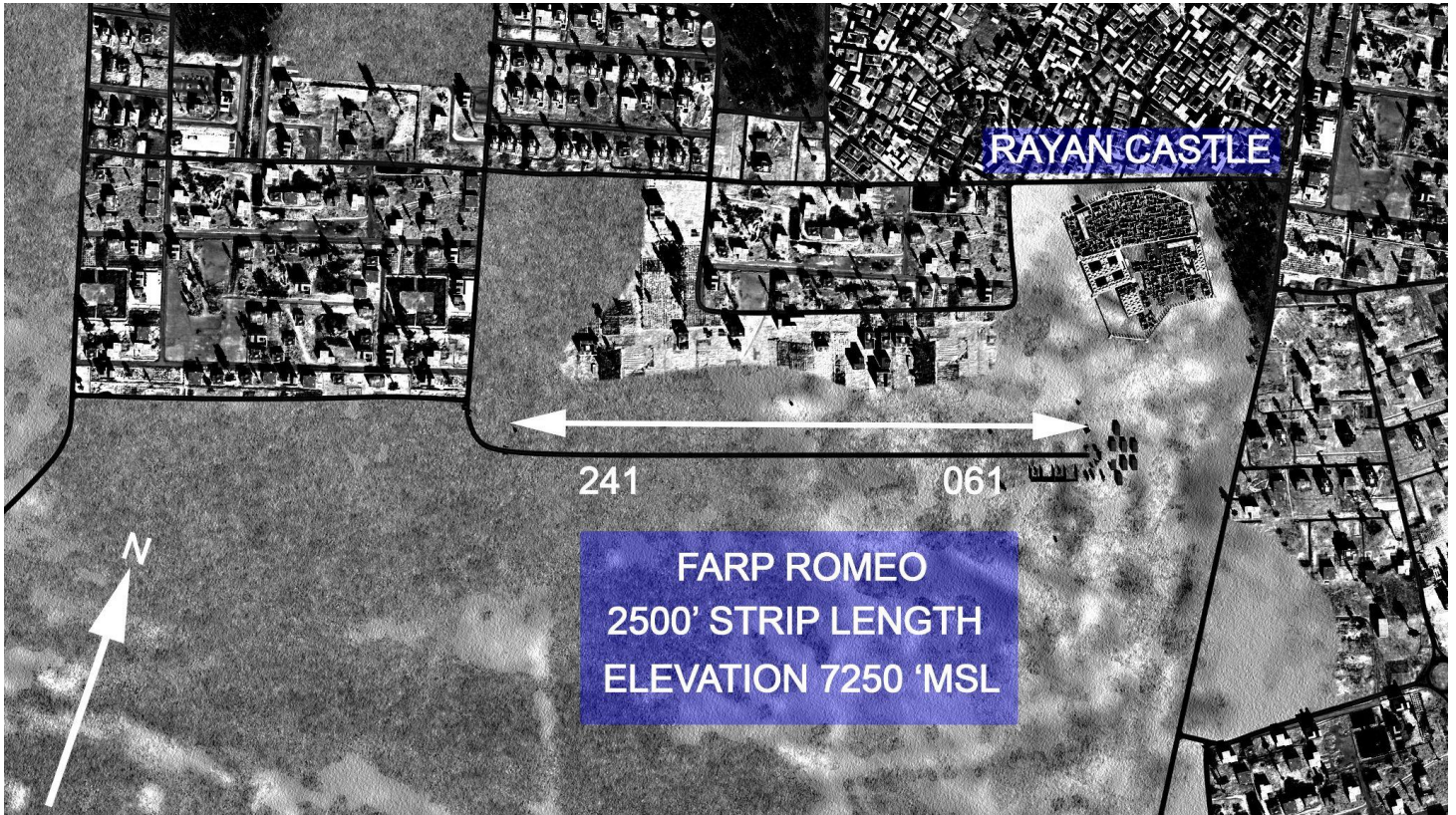
High Value Targets - details to be passed by Chieftain once airborne.

Flight Plan:

Waypoint	Alt (K Ft MSL)	Mach	Notes
1	20	0.65	RV flight
2	20	0.65	
3	20	0.65	Rafsanjan
4	7.1		Primary TGT
5	20	0.7	Egress
6	20	0.7	
7	7.2		FARP Romeo
			BULLS N29°30'55", E57°16 '24"

OPERATION RAPID EAGLE 11/18/11





Fuel Plan:

Bingo 1400 lb.

OPERATION RAPID EAGLE 11/18/11**Radio Plan:**

Channel	Comm 1	Freq	Comm 2	Freq
1	Juliet Ground	141.0	Juliet Ground	141.0
2	Juliet Tower	141.5	Hellcat 1	260.0
3	Juliet Departure	142.25	Reaper 3-1	284.4
4	Juliet Arrival	142.6	Reaper 3-2	289.9
5	Juliet Emergency	143.1	Reaper 4-1	315.2
6	Chieftain	291.5	Wolf 4-2	267.0
7	Steel Rain	181.6	Spartan 3	351.6
8	Iceman	185.7	Sandman 1	281.8
9	Fixer	189.0	Sandman 5	289.4
10	Madman	193.2	Black	329.8
11	Cyclops 3	241.7	White	266.8
12	FARP Romeo	296.9	Red	312.0
13	SPARE	--	Orange	355.2
14	SPARE	--	Yellow	231.4
15	SPARE	--	Green	388.7
16	SPARE	--	Blue	251.5
17	SPARE	--	Indigo	363.4
18	SPARE	--	Violet	200.6
19	SPARE	--	Magenta	391.1
20	SPARE	--	Grey	241.3
21	SPARE	--	SPARE	--
22	SPARE	--	SPARE	--
23	SPARE	--	SPARE	--
24	SPARE	--	SPARE	--
25	SPARE	--	SPARE	--
26	SPARE	--	SPARE	--

Threats:

MIM-23 HAWK	
Guidance Type	Semi Active Radar Homing
Acquisition Range	49 nm
Max Engagement Range	25 nm
Max Ceiling	65,000 Ft MSL
Missile Mach	2.4
Warhead Type	119lb Frag HE
RWR Symbology	HA
Notable Features	<p>US manufactured SAM system.</p> <p>Typical battery consists of Command Post, Search Radar, Track Radar and up to 6 launchers (3 missiles each). Some batteries may also contain a Continuous Wave Acquisition Radar, designed for low altitude detection.</p> <p>Missile burn time ~ 25 seconds.</p>

SA-6 'GAINFUL'	
Guidance Type	Radar, command guidance, semi active radar homing
Acquisition Range	40 nm
Max Engagement Range	15 nm
Max Ceiling	40,000 Ft MSL
Missile Mach	2.8
Warhead Type	130lb Frag HE
Fuzing	Proximity/contact
RWR Symbology	6
Notable Features	<p>Semi Active Radar Homing in terminal phase.</p> <p>Missile burn time ~ 21 seconds.</p> <p>Highly mobile, can be operational within 15 minutes of relocating.</p> <p>Typical configuration - 1 x Tracked 'Straight Flush' radar vehicle, 4 x tracked TEL's carrying 3 missile apiece.</p>

OPERATION RAPID EAGLE 11/18/11

SA-8 'GECKO'	
Guidance Type	Radar, command guidance
Acquisition Range	15 nm
Max Engagement Range	6 nm
Max Ceiling	39,000 Ft MSL
Missile Mach	2.0
Warhead Type	35lb Frag HE
Fuzing	Proximity/contact
RWR Symbology	8
Notable Features	Amphibious & highly mobile. Missile burn time ~ 15 seconds. 6 missile load.

SA-15 'GAUNTLET'	
Guidance Type	Radar Command Guidance
Acquisition Range	15 nm
Max Engagement Range	8 nm
Max Ceiling	25,000 Ft MSL
Missile Mach	2.5
Warhead Type	30lb Frag HE
Fuzing	RF Proximity
RWR Symbology	15
Notable Features	Tracked TLAR highly mobile, carries 8 missiles ready to fire. Missile burn time ~ 7 seconds.

OPERATION RAPID EAGLE 11/18/11

SA-18 'GROUSE'	
Guidance Type	Infra-Red
Acquisition Range	Visual
Max Engagement Range	3 nm
Max Ceiling	12,000 Ft MSL
Missile Mach	1.9
Warhead Type	2.6lb Frag HE
Fuzing	Contact / Grazing
Notable Features	Man Portable Air Defence (MANPAD), highly mobile and easy to hide. May operate in teams of shooter/spotter, communicating over distance to ambush targets.

ZU-23 AAA	
Guidance Type	None
Acquisition Range	Visual
Max Engagement Range	1.5 nm
Max Ceiling	7,000 Ft MSL
Notable Features	Twin 23mm autocannon. Towed system, easy to relocate. Cheap and widely proliferated. Can be truck mounted for a highly mobile, low cost air defence platform. Fires HE rounds that explode on contact or at set altitude.

OPERATION RAPID EAGLE 11/18/11

S-60 AAA	
Guidance Type	None
Acquisition Range	Visual
Max Engagement Range	3 nm
Max Ceiling	20,000 Ft MSL
Notable Features	Single 57mm autocannon. Capable of firing over 70 rounds per minute. Towed system, easy to relocate. Cheap and widely proliferated. Fires HE rounds that explode on contact or at set altitude.

ZSU-23-4 AAA	
Guidance Type	Radar
Acquisition Range	2.5 nm
Max Engagement Range	1.5 nm
Max Ceiling	7,000 Ft MSL
RWR Symbology	A
Notable Features	Four x 23mm autocannon. Tracked and high mobile. Fires HE rounds that explode on contact or at set altitude.

ZU-57-2	
Guidance Type	None
Acquisition Range	Visual
Max Engagement Range	3 nm
Max Ceiling	20,000 Ft MSL
Notable Features	2 x 57mm autocannon. Tracked, self-propelled system. Uses a version of the widely proliferated S-60 AA cannon.