

OCN SORTIE # 280613/12**Flight:**

Call Sign	Tail	Freq	TCN	Role	T/O Time	TOT	End Vul
Devil 1-2	309	260	N/A	Strike	13:50	14:15	14:45
Devil 1-3	305	260	20X	Strike	13:45	14:15	14:45

Mission Support:

Call Sign	Freq	Role	Notes
Sentinel	236.8	ABCCC	
Sentinel Actual	240.4	Mission Commander	
Shell	331.8	AAR	TACAN 98Y
Arco	308.2	AAR	TACAN 74X
Texaco	354.6	AAR	TACAN 66X
Shadow 2-6	341.7	ISTAR	
Noble 4-2	368.6	ISTAR	

Loadout:

Station 1	AIM-9M	Station 5	FPU-8A Fuel Tank
Station 2	GBU-31	Station 6	AIM-120C
Station 3	FPU-8A Fuel Tank	Station 7	FPU-8A Fuel Tank
Station 4	LITENING TGP	Station 8	GBU-31
Countermeasures	20 chaff, 50 flare	Station 9	AIM-9M
Fuel	17,536 lb	Gross Weight	49,889 lb

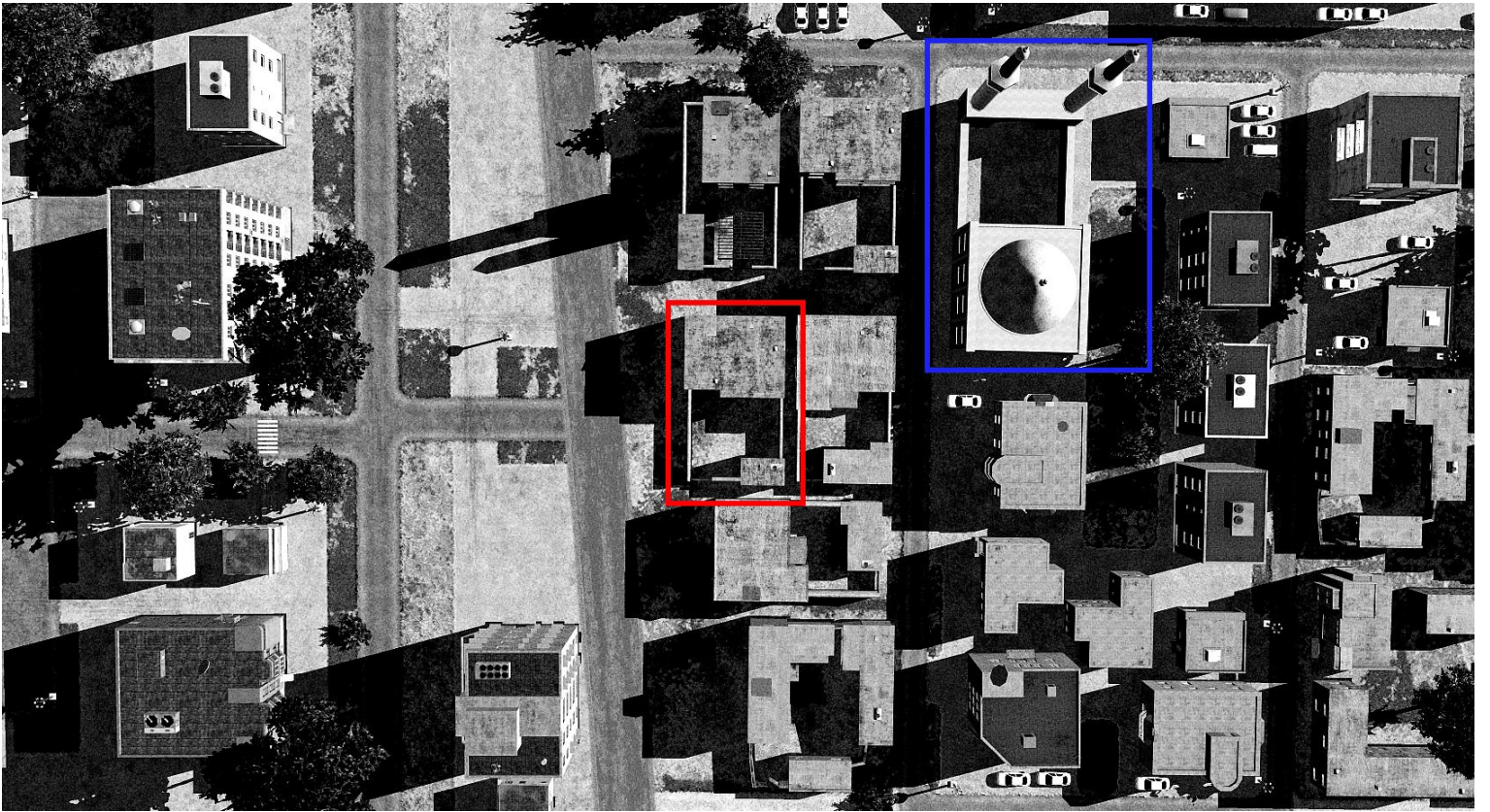
Weather:

Clouds	Wind	Temperature	Precipitation
4/10 10,500 - 12,500 ft	122 @ 2kn GL 082 @ 6Kn 6600ft 237 @ 12Kn 26000 ft	32°C	None

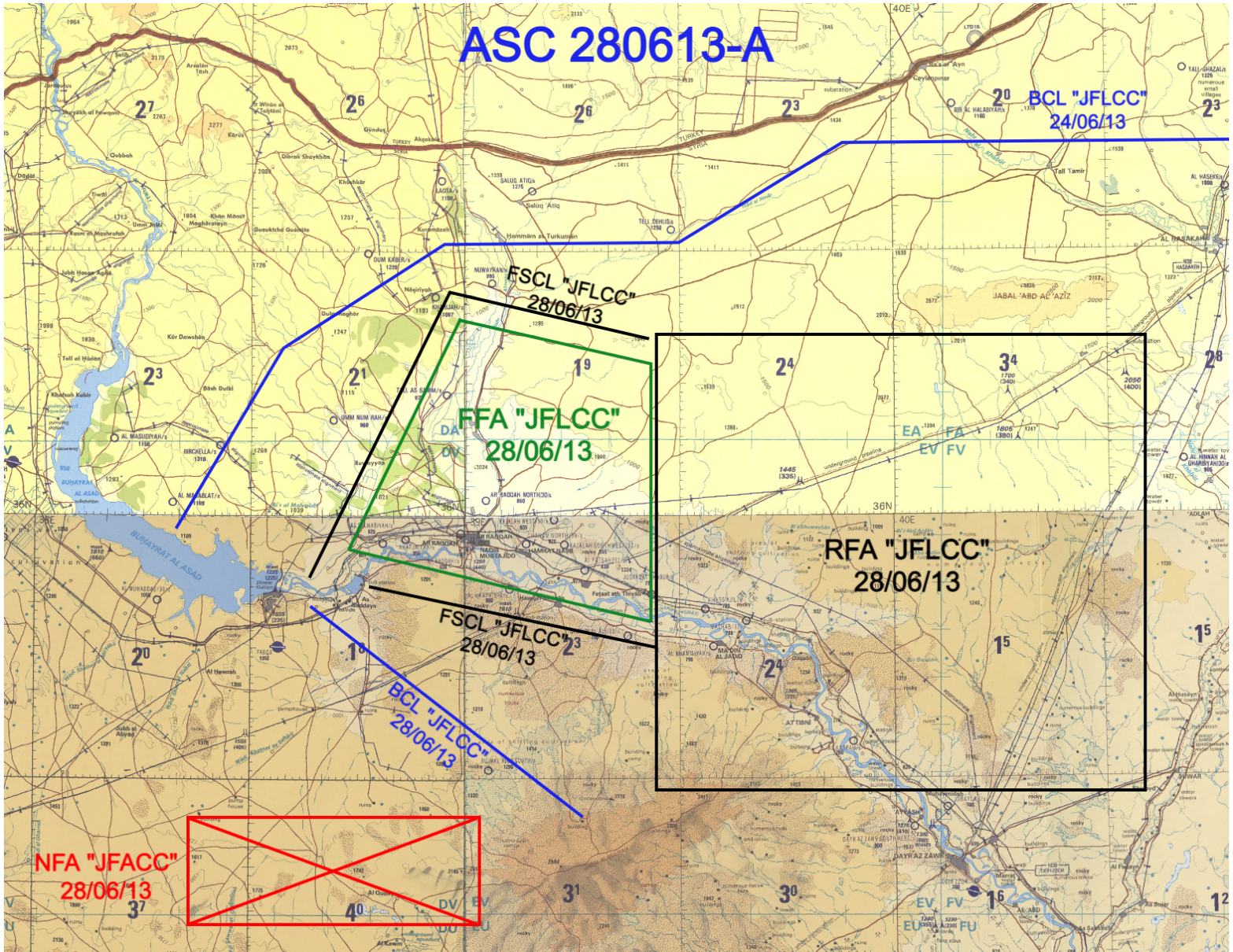
Primary Objective:

Strike residence of Saad Abdullah Sajid. Location $N35^{\circ}56'59.28''$ $E39^{\circ}02'00.49''$ elevation 778 feet.



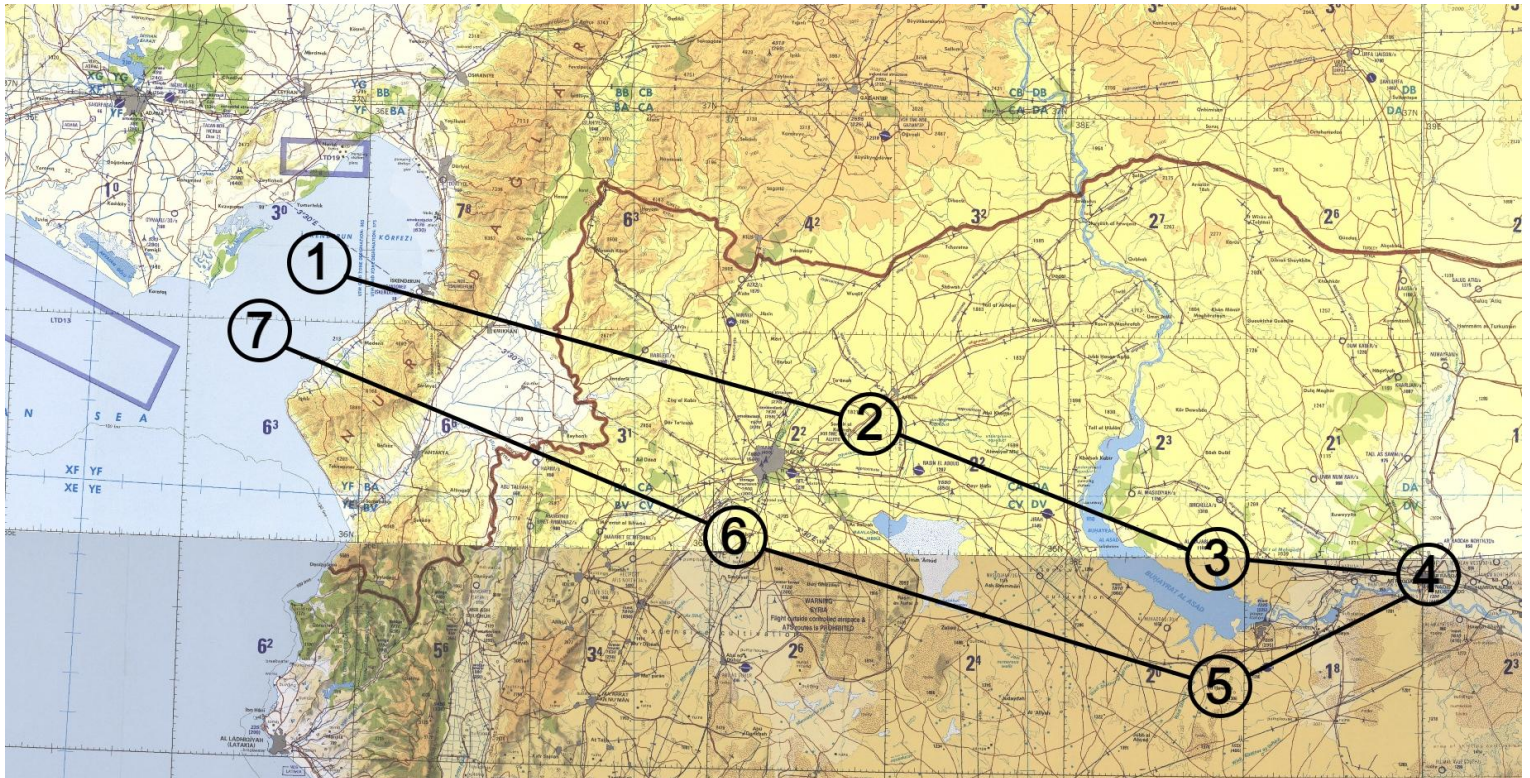


Air Support Chart:



Flight Plan:

WP	Alt Kft	Mach	Notes
1	25	0.72	RV
2	25	0.75	Gold
3	25	0.75	
4	25	0.75	Raqqa
5	25	0.75	
6	20	0.75	Gold
7	20	0.75	Arrival MTCA
			BULLS N 35°43'59" E 37°06'17"



Fuel Plan:

Stage	Notes	Target Fuel lb
Takeoff		16966
Departure	<i>To 25k Ft</i>	15736
WP1	<i>25K Ft, M0.75</i>	15036
WP2	<i>25K Ft, M0.75</i>	13668
WP3	<i>25K Ft, M0.75</i>	12750
WP4	<i>25K Ft, M0.75</i>	12228
Joker = 6950		
Bingo = 6200		
WP5	<i>25K Ft, M0.75</i>	5719
WP6	<i>20K Ft, M0.75</i>	4650
WP7	<i>20K Ft, M0.75</i>	3561
Pattern & Landing		1600

Radio Plan:

Channel	Comm 1	Freq	Comm 2	Freq
1	<i>INK Ground</i>	<i>250.2</i>	<i>INK Ground</i>	<i>128.1</i>
2	<i>Devil 1</i>	<i>260</i>	<i>INK Tower</i>	<i>128.2</i>
3	<i>Noble 4-2</i>	<i>368.6</i>	<i>INK Departure</i>	<i>128.5</i>
4	<i>Shadow 2-6</i>	<i>341.7</i>	<i>INK Approach</i>	<i>128.3</i>
5	<i>Liberty 5-2</i>	<i>311.8</i>	<i>INK Arrival</i>	<i>128.4</i>
6	<i>Colt 1</i>	<i>319.6</i>	<i>INK ATIS</i>	<i>128.95</i>
7	<i>Dodge 4</i>	<i>279.8</i>	<i>INK Emergency</i>	<i>128.7</i>
8			<i>Sentinel</i>	<i>236.8</i>
9			<i>Sentinel Actual</i>	<i>240.4</i>
10			<i>Texaco</i>	<i>354.6</i>
11			<i>Shell</i>	<i>331.8</i>
12			<i>Arco</i>	<i>308.2</i>

Threats:

SA-9 and AAA in the vicinity of Raqqa and Tabqa.

Expect MANPADS and AAA throughout SIA territory.

Russian SA-19 at FOB south of Raqqa.

At least 3 SA-6 & 2 x SA-11 arrayed parallel to Sierra, aircraft operating within Sierra have seen attempts to engage them.