

Date: 08/14/13

Callsign: Sword 2-1

ATO Syria

Mission# 4222	Step 08:40Z	Startup 09:25Z	Takeoff 09:35Z
---------------	-------------	----------------	----------------

TGT Area Homs-Yabrud TOT 10:05Z	Weather 24°C Broken ~ 15,000ft + 25,000 ft Winds 110 8 Kn @ GL Winds 254 11Kn @ 6600 Winds 139 25 Kn @ 26000
--	--

A/C#	Pilot	TACAN	Spot
942	Forrest - Sword 2-1		9
966	Bug - Sword 2-2	35X	13

Loadout

9	8	7	6	5R	5	5L	4	3	2	1
120C	9X	2* GBU 38	Fuel	TGP	ALQ 184L	HTS	Fuel	2* AGM 65H	9X	120C

Chaff / Flare 90 Chaff / 30 Flares

Gun SAPHEI

Fuel 12,113 lb

Gross Weight 39,767 lb

Date: **08/14/13**Callsign: **Sword 2-1**

ATO Syria

Function	Callsign	Freq	
ABCCC	Sentinel	236.800	
Rivet Joint	Vacuum	293.400	
AWACS West	Darkstar	287.600	
AWACS East	Magic	283.150	
AAR West	Arco	308.200	74 X
AAR North	Texaco	354.600	66 X
AAR East	Shell	331.800	89 Y

AKROTIRI ATC	COMM 1 UHF		COMM 2 VHF
Ground 122.100	Darkstar	1	Akr Ground
Tower 130.100	Magic	2	Akr Tower
Dep' ture 124.200	Arco	3	Akr Departure
Appr' ch 123.600	Shell	4	Akr Approach
Emerg' cy 133.300	Texaco	5	Akr Emergency
ATIS 125.000	Sentinel	6	Akr ATIS
TACAN 107X	Vacuum	7	Sword 2
	Green 1	8	Red 1
	Green 2	9	Red 2
	Green 3	10	Red 3
	Black 1	11	Red 4
	Black 2	12	Purple 1
	Black 3	13	Purple 2
	White 1	14	Purple 3
	White 2	15	Blue 1
	Magenta 1	16	Blue 2
	Magenta 2	17	Blue 3
	Magenta 3	18	Yellow 1
	Indigo 1	19	Yellow 2
	Indigo 2	20	Yellow 3

Sword 2
VHF 140.6

Date: 08/14/13

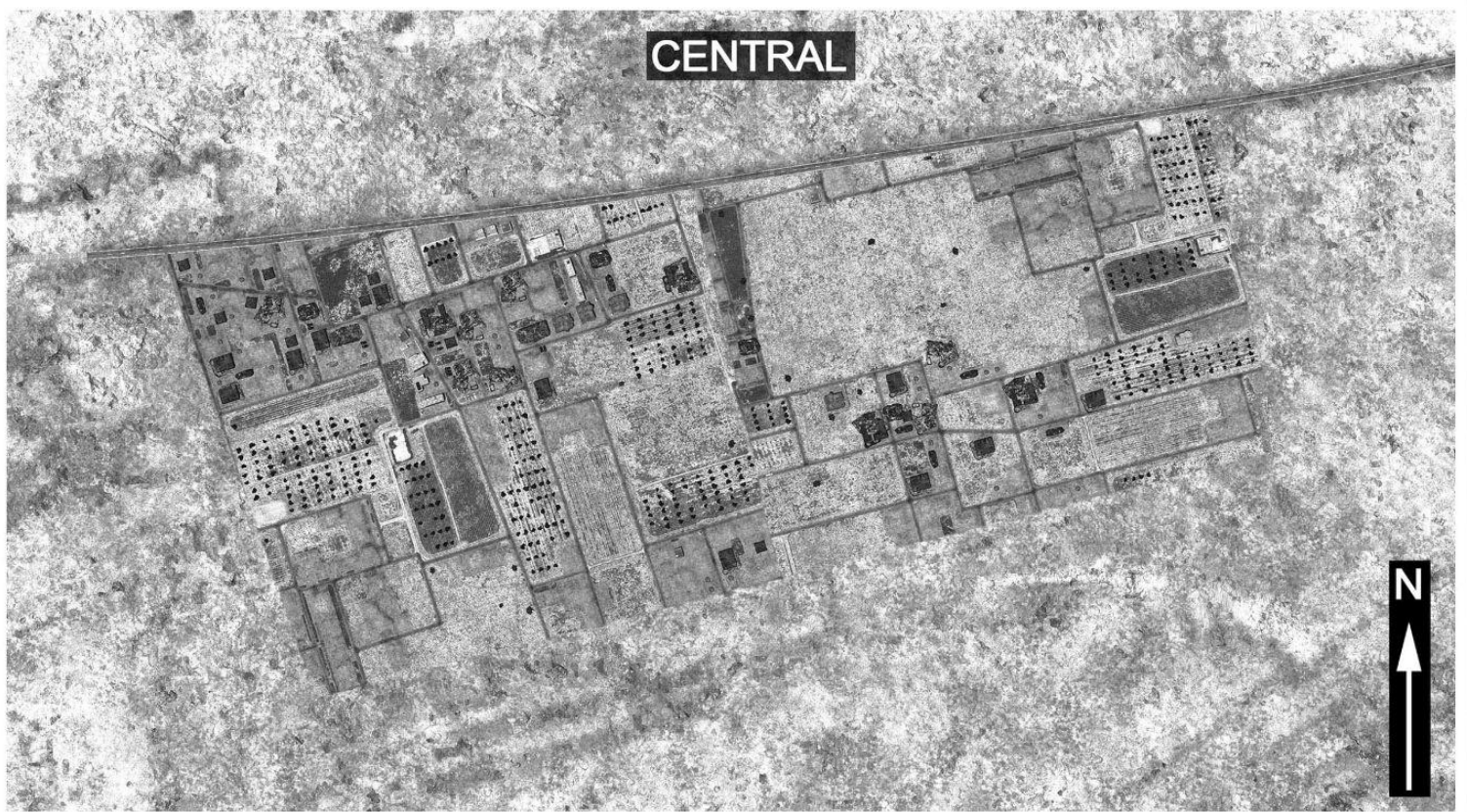
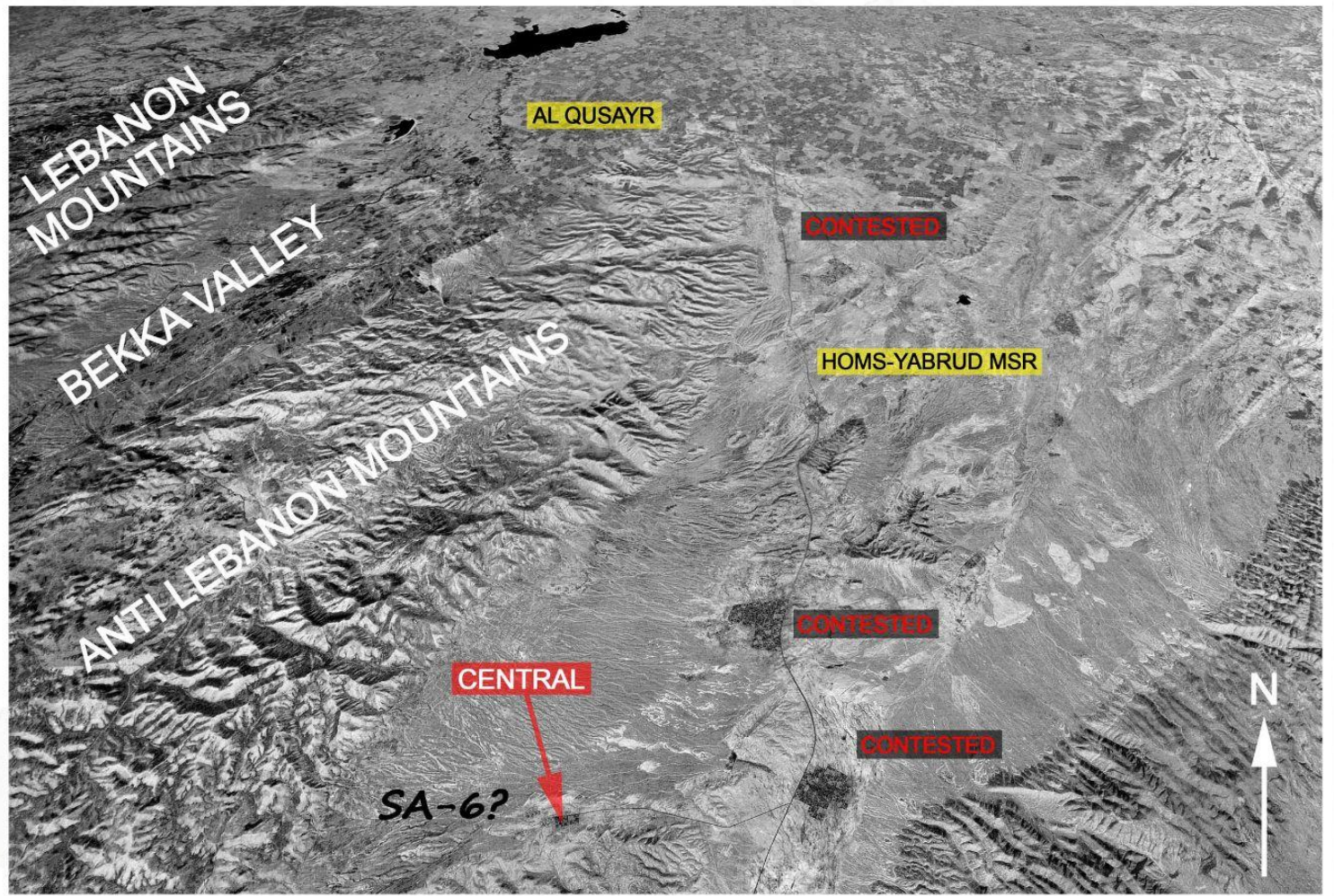
Callsign: Sword 2-1

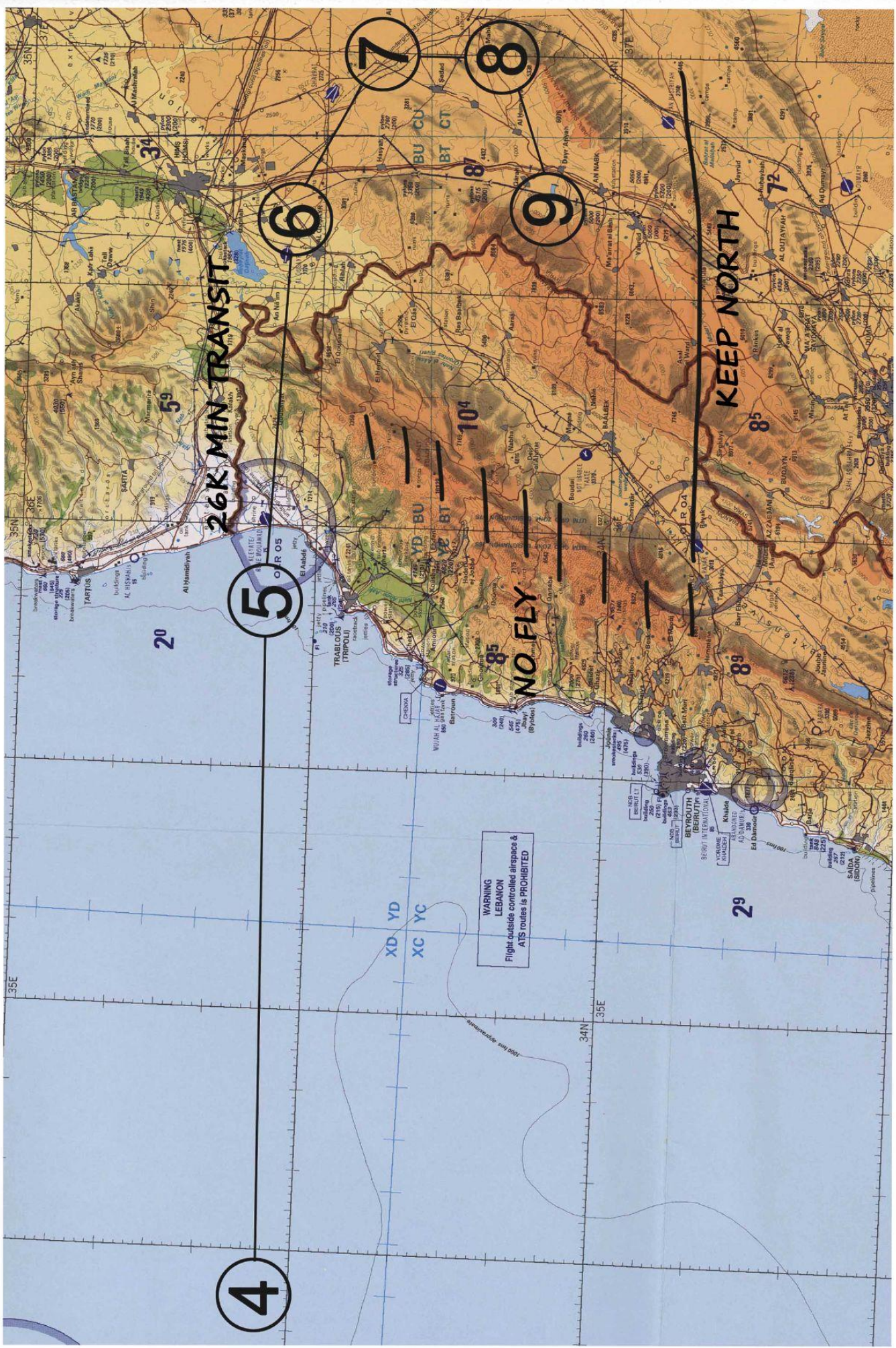
ATO Syria

Flight Plan	WP	Fuel Plan
MEZUS	1	
ANANE	2	
IREFA	3	
25K FT, MO.65	4	10,142 lb
SILVER - MO.65	5	9,050 lb
SILVER - MO.65	6	8,616 lb
20K FT, MO.65	7	8,248 lb
IP - 14K FT	8	8,008 lb
CENTRAL	9	
SILVER - MO.65	6	2,838 lb
SILVER - MO.65	5	2,528 lb
23K FT, MO.65	4	1,748 lb

Bullseye: PORTAL

Bingo 3100 lb





THREATS & CODES:

- SA-2: MEZ = 23nm, Max alt = 82,000 ft HAD Class 2
- SA-3: MEZ = 10nm, Max alt = 59,000 ft HAD Class 2
- SA-6: MEZ = 15nm, Max alt = 40,000 ft HAD Class 2
- SA-8: MEZ = 6nm, Max alt = 16,000 ft / 39,000 ft HAD Class 2
- SA-10: MEZ = 65nm, Max alt = 95,000 ft HAD Class 1
- SA-11: MEZ = 20nm, Max alt = 72,000 ft HAD Class 1
- SA-15: MEZ = 8nm, Max alt = 25,000 ft HAD Class 1
- MANPAD/SA-9: MEZ = 3nm, Max alt = 12,000 ft