

		Chan	ILS	TCN	Countermeasures	60 Chaff, 420 Flare
Depart	Shiraz	123.7 AM		94X	Loadout	CM Gun 100% load 4 x AGM-65D 1 x 7 M151 HE APKWS 2 x GBU-12 2 x GBU-38 1 x CBU-97 Litening TGP
Arrival	Shiraz	123.7 AM	109.9 (29L)	94X	Fuel	11,087 lb
					Total Weight	45,565 lb

Flight Plan
-------------

WP	Alt (k ft)	IAS (Kn)	Notes	WP	Alt (k ft)	IAS (Kn)	Notes
1	8700	230	RV 02:45 ZULU	8			COUGAR
2	17.5	230		9			SECONDARY TARGET
3	17.5	230	MARSHALL	10	17.5	230	EGRESS
4	17.5	230	STACK	11	17.5	230	
5	17.5	230	IP	12	17.5	230	
6			PANTHER	13	8	230	APPROACH
7			TIGER	14			LANDING

Joker Fuel 2500lb

Bingo Fuel 2000lb

## Mission Elements

Callsign	Comms
Overlord	128.5 AM

## Comms

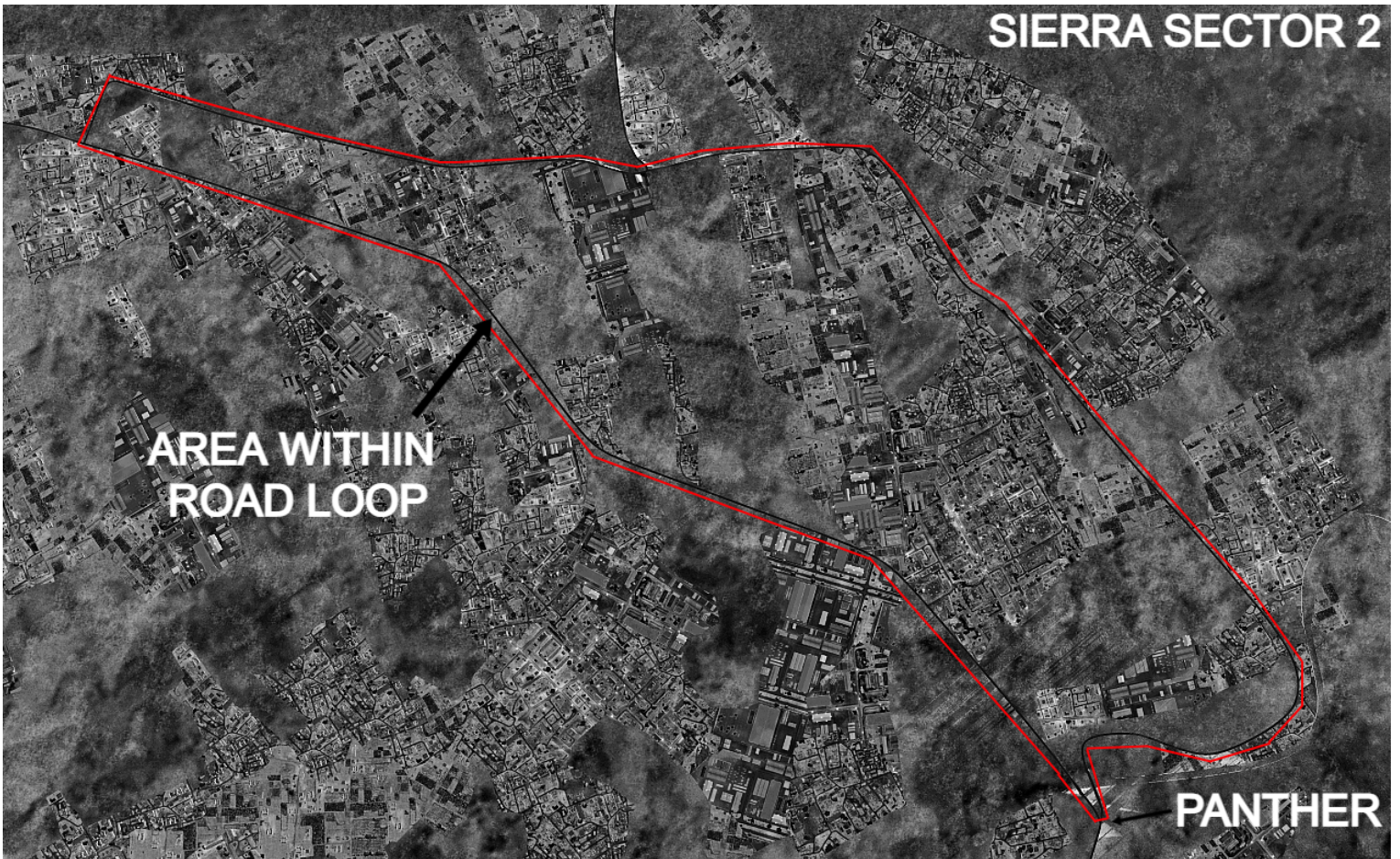
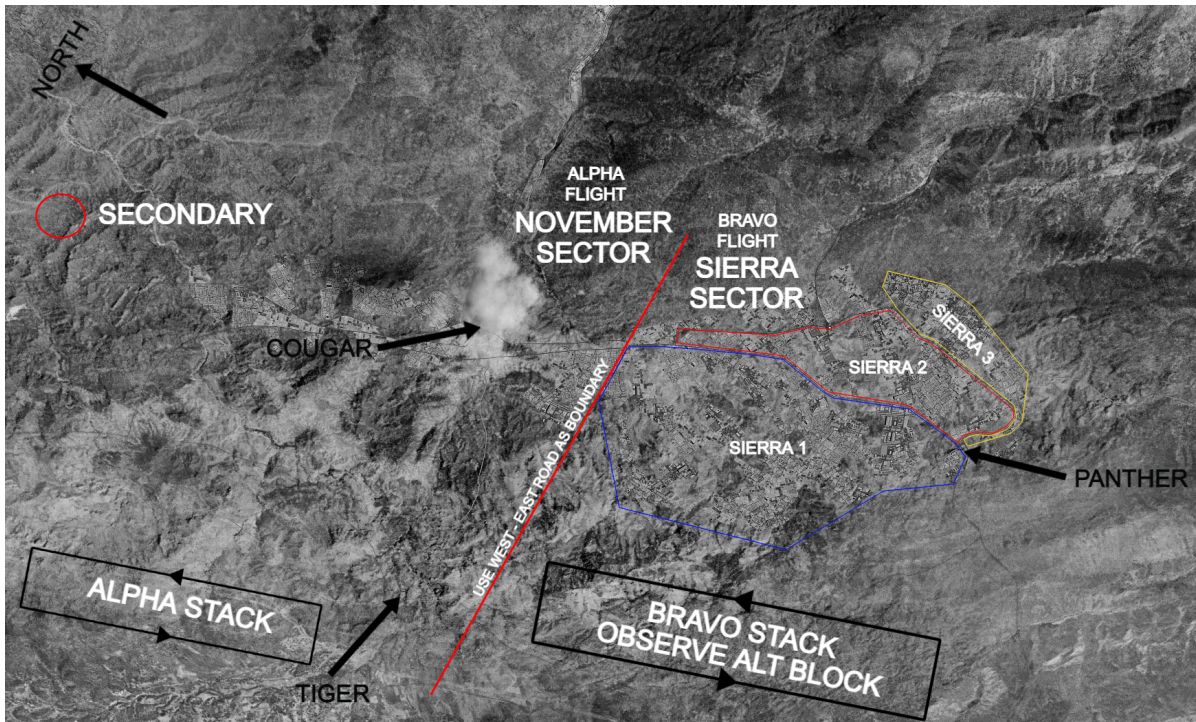
Channel	VHF AM	UHF	VHF FM
1	Shiraz ATC	Guard	YELLOW (35.4)
2	Overlord	Gunman	RED (38.7)
3			PURPLE (39.6)
4			BROWN (40.4)
5			PINK (42.8)
6			BLUE (45.6)
7			ORANGE (47.8)
8			GREEN (52.8)
9			
10			

## Weather

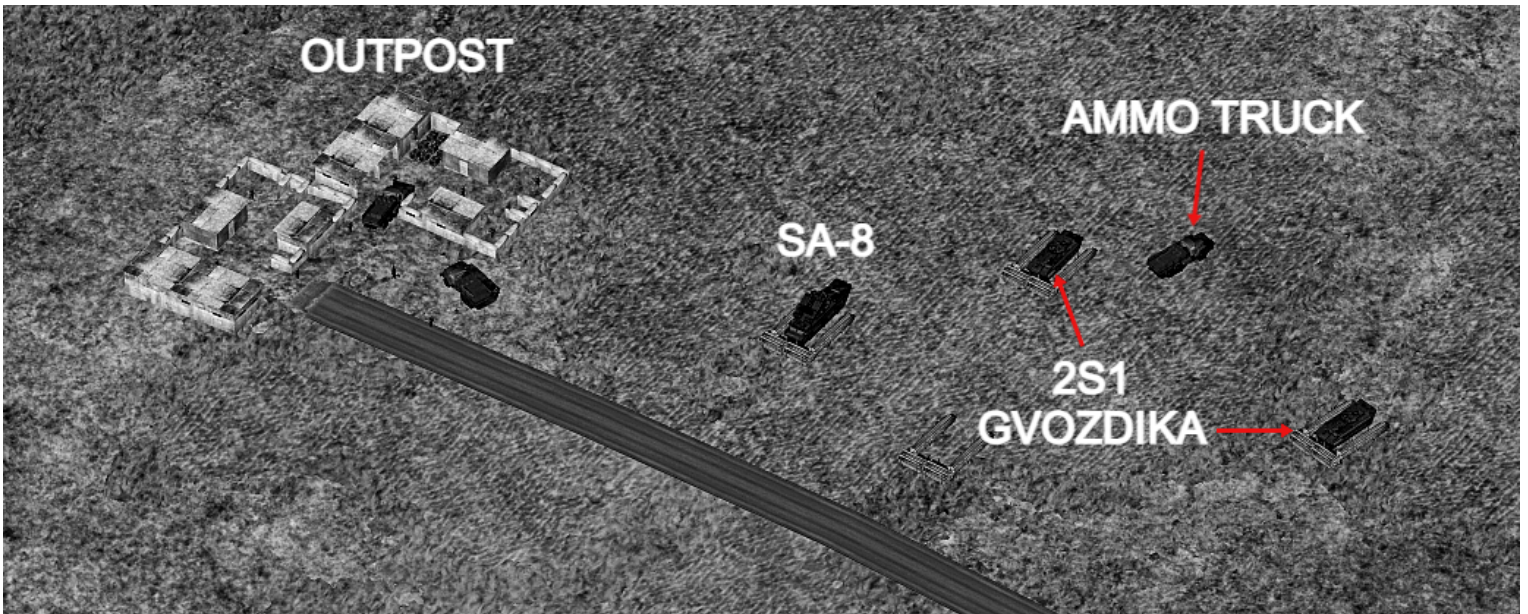
Wind = 236 7kn @ GL, 190 10Kn @ 6600, 113 15Kn @26000.

Temp 20C.

Clouds 6/10, base 16000 feet, 1500 feet depth.







# Threats

## SR-P19 EWR

*Mobile Early Warning Radar  
Acquisition Range ~ 85 nm*

## SA-6 "Gainful"

*Radar Guided SAM  
Acquisition Range ~ 40 nm  
Engagement Range ~ 15 nm  
Ceiling ~ 40,000 ft  
Missile Mach ~ 2.8  
Warhead - Prox / Contact 130lb  
Salvo Size - 3*

## SA-9 "Gaskin"

*Infra-Red Guided SAM  
Detection Range - Visual  
Engagement Range ~ 2.5 nm  
Ceiling ~ 12,000 ft  
Missile Mach ~ 1.8  
Warhead - RF Proximity, 6lb  
Salvo Size - 4*

## SA-11 "Gadfly"

*Radar Guided SAM  
Acquisition Range ~ 50 nm  
Engagement Range ~ 20 nm  
Ceiling ~ 72,000 ft  
Missile Mach ~ 4  
Warhead - RF Proximity 150lb  
Salvo Size - 4*

## SA-15 "Gauntlet"

*Radar Guided SAM  
Acquisition Range ~ 15 nm  
Engagement Range ~ 7 nm  
Ceiling ~ 25,000 ft  
Missile Mach ~ 2.5  
Warhead - Proximity 30lb  
Salvo Size - 8*

## SA-18 "Grouse" MANPAD

*Portable Infra-Red Guided SAM  
Detection Range - Visual  
Engagement Range ~ 3 nm  
Ceiling ~ 11,000 ft  
Missile Mach ~ 1.9  
Warhead - Contact, 2.6lb  
Salvo Size - 1*

# Threats

RWR	NAME	RWR	NAME	RWR	NAME
A	ZSU-24	P	Patriot	15	F-15
2	SA-2	PA	Patriot	16	F-16
3	SA-3	RO	Roland	18	F-18
6	SA-6	E2	E2 AWACS		
8	SA-8	E3	E3 AWACS		
10	SA-10 TR	50	A50 AWACS		
CS	SA-10 SR LowAlt	23	Mig-23		
BB	SA-10 SR	25	Mig-25		
11	SA-11	29	Mig-29 / SU-27		
SD	SA-11/17 SR	30	SU-30		
13	SA-13	31	Mig-31		
15	SA-15	34	SU-34		
DE	SA-15 SR	M2	M-2000		
HA	Hawk	4	F-4		
S	EW/GCI	5	F-5		
S6	SA-19	14	F-14		

## Countermeasure Programmes

<b>PROG</b>	<b>CHAFF QTY</b>	<b>FLARE QTY</b>	<b>INTERVAL (SEC)</b>	<b>CYCLE</b>
A	2	0	1	10
B	4	0	0.5	10
C	0	4	1	10
D	2	2	1	10
E	2	2	0.5	10
F	4	4	1	10
G	4	4	0.5	10
H	1	0	1	1
I	2	0	1	1
J	0	1	1	1
K	0	2	1	1
L	1	0	1	20
M	0	1	1	20

# CAS

## 9 Lines

1. Initial point (IP)
2. Heading from the IP to the target.
3. Distance from the IP to the target in nautical miles.
4. Target elevation in feet above mean sea level.
5. Target description.
6. Target location coordinates.
7. Type of mark.
8. Location of friendlies from the target, direction, and distance in meters.
9. Egress direction.

## Terminology

*Cleared hot* - air support is cleared to engage the target.

*Winter* - this is the predetermined abort code in theatre. If the JTAC issues code winter or calls abort then the attacking aircraft must safety weapons systems and maneuver off target.

*Contact* - refers to spotting visual references used to talk onto a target.

*Tally* - Visual confirmation by the pilot of the target.

*Visual*- Visual confirmation of friendly forces.



# ROE

Hostile Act considered if unit:

- Engages friendly forces with a weapons system.

OR

- Supports the weapons systems of other units, resulting in weapons release. Including but not limited to lasing, marking, radar illumination of targets.

Hostile Act considered if unit meets **all** the conditions below:

- Spikes/spots/marks a friendly target within their weapons range or the range of a supporting unit.
- Persistently maneuvers to maintain a weapons firing solution or to maintain solution for fire support.
- PosID as a bandit or belonging to a hostile force.

Hostile Act considered if unit meets **all** the conditions below:

- Moves in an aggressive manner towards friendly forces.
- Actively deploys countermeasures and/or seeks to avoid detection.
- PosID as a bandit or belonging to a hostile force.

Hostile Act considered if unit meets **any** of the conditions below:

(note these conditions may often apply to individuals that are civilian in appearance)

- Observed preparation of an ambush position, including but not limited to the positioning of weapons systems, explosives or significant obstructions in tactically advantageous positions.
- PosID as engaging in the command and control of hostile forces.
- Observed in the use, transportation or maintenance of weapons systems that pose a threat to coalition forces within a contested battlespace.

Upon confirmation of a hostile act, aircrew are cleared to engage and act in self defence or the defence of friendly forces.