

**OCN SORTIE # 190713/7****Flight:**

Call Sign	Tail	Freq	TCN	Role	T/O Time	TOT	End Vul
Devil 1-1	301	260	65X	Strike	04:54	05:53	06:12
Devil 1-2	309	260	N/A	Strike	04:57	05:53	06:12

**Mission Support:**

Call Sign	Freq	Role	Notes
Sentinel	236.8	ABCCC	
Sentinel Actual	240.4	Mission Commander	
Arco	308.2	AAR	74X
Cobra 1	281.6	SEAD	End Vul 06:00
Spartan 4	301.5	EW	Vul time 20 min
Flash 3	266.6	OCA	Vul time 20 min
Hammer 3	246.4	Strike	End Vul 05:57

**Loadout:**

<b>Station 1</b>	AIM-9M	<b>Station 5</b>	MK-20 x 2
<b>Station 2</b>	AGM-154A	<b>Station 6</b>	AIM-120C
<b>Station 3</b>	FPU-8A Fuel Tank	<b>Station 7</b>	FPU-8A Fuel Tank
<b>Station 4</b>	LITENING TGP	<b>Station 8</b>	AGM-154A
<b>Countermeasures</b>	80 Chaff, 4 Flare	<b>Station 9</b>	AIM-9M
<b>Fuel</b>	15,291 lb	<b>Gross Weight</b>	47,188 lb

**Weather:**

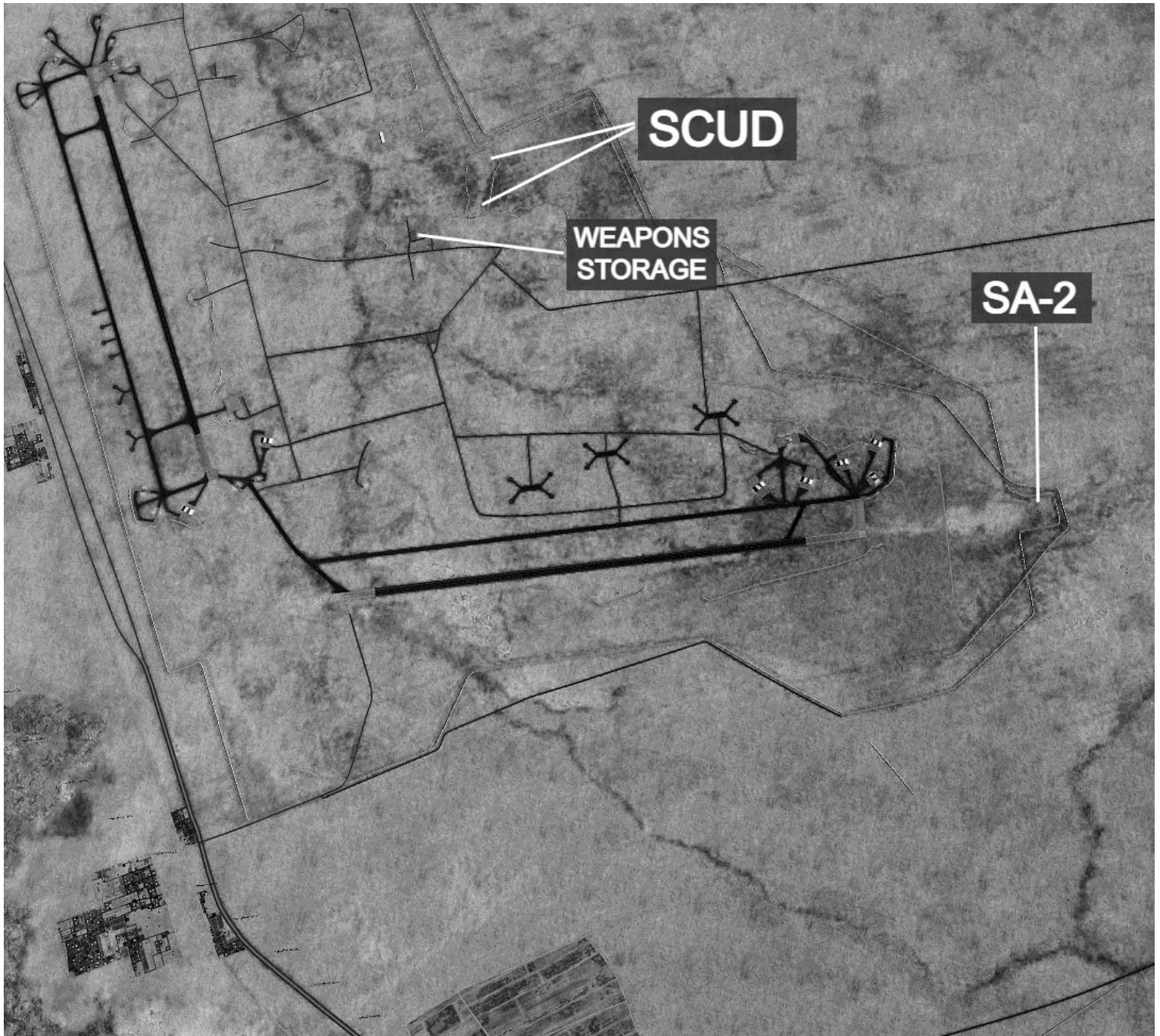
Clouds	Wind	Temperature	Precipitation
Scattered 8-9 Few 21	076 @ 3 Kn GL 141 @ 4 Kn 6600 ft 228 @ 3 Kn 26000 ft	17°C	None

**Primary Objective:**

*3 x Scud TEL:*

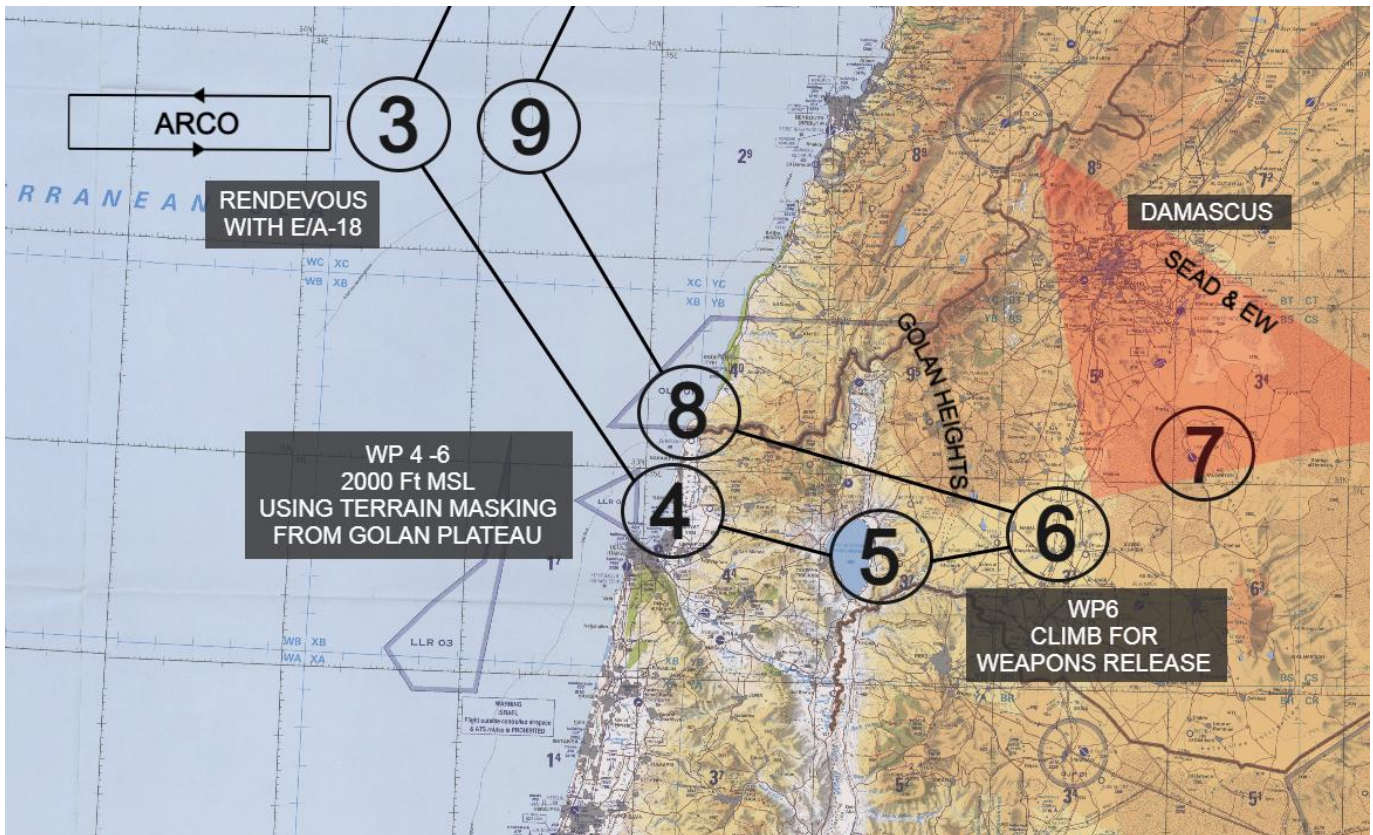
*Position 1: N33°05'10.28" E36°33'36.60" 2313 Feet MSL*

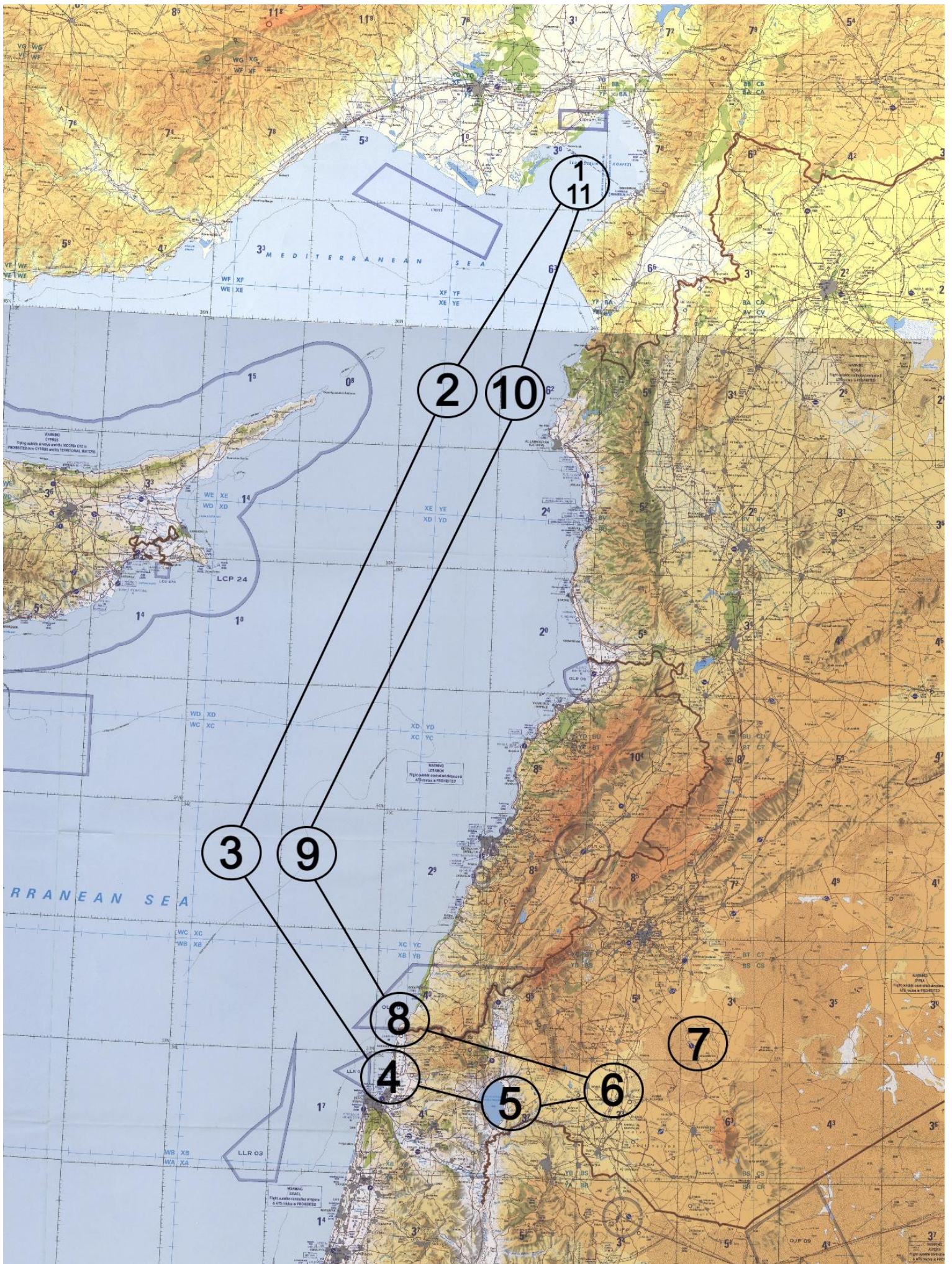
*Position 2: N33°05'14.18" E36°33'36.32" 2332 Feet MSL*



**Flight Plan:**

WP	Alt Kft	Mach	Notes
1	25	0.75	RV Flight
2	25	0.75	
3	25	0.75	AAR (ARCO) + 6000lb
4	2	0.75	Feet Dry Israel
5	2	0.75	
6	2	0.75	Climb for weapons release
7			Khalkhalah Airbase
8	2	0.75	Feet Wet
9	25	0.75	
10	25	0.75	
11	25	0.75	
12			Incirlik
			<b>BULLS N 35°43'59" E 37°06'17"</b>





**Fuel Plan:**

<b>Stage</b>	<b>Notes</b>	<b>Target Fuel lb</b>
Takeoff		<b>14721</b>
Departure	<i>To 25k Ft</i>	<b>13491</b>
WP1	<i>25Kft @ M0.75</i>	<b>12791</b>
WP2	<i>25Kft @ M0.75</i>	<b>11549</b>
WP3	<i>25Kft @ M0.75</i>	<b>9389</b>
<b>AAR</b>	<i>ARCO + 6000 lb</i>	<b>15200</b>
WP4	<i>25Kft @ M0.75</i>	<b>12700</b>
WP5	<i>2Kft @ M0.85</i>	<b>11177</b>
WP6	<i>2Kft @ M0.85</i>	<b>10617</b>
<b>Bingo = 7734 lb</b>	<i>EGRESS LOW LEVEL</i>	
WP8	<i>25Kft @ M0.75</i>	<b>6852</b>
WP9	<i>25Kft @ M0.75</i>	<b>5439</b>
WP10	<i>25Kft @ M0.75</i>	<b>4531</b>
WP11		<b>3459</b>
Approach	<i>15Kft @ M0.75</i>	<b>2559</b>
Pattern & Landing		<b>1539</b>

**Radio Plan:**

<b>Channel</b>	<b>Comm 1</b>	<b>Freq</b>	<b>Comm 2</b>	<b>Freq</b>
1	<i>INK Ground</i>	250.2	<i>INK Ground</i>	128.1
2	<i>Devil 1</i>	260	<i>INK Tower</i>	128.2
3	<i>Cobra 1</i>	281.6	<i>INK Departure</i>	128.5
4	<i>Flash 3</i>	266.6	<i>INK Approach</i>	128.3
5	<i>Hammer 3</i>	246.4	<i>INK Arrival</i>	128.4
6	<i>Spartan 4</i>	301.5	<i>INK ATIS</i>	128.95
7			<i>INK Emergency</i>	128.7
8			<i>Sentinel</i>	236.8
9			<i>Sentinel Actual</i>	240.4
10			<i>Texaco</i>	354.6
11			<i>Shell</i>	331.8
12			<i>Arco</i>	308.2

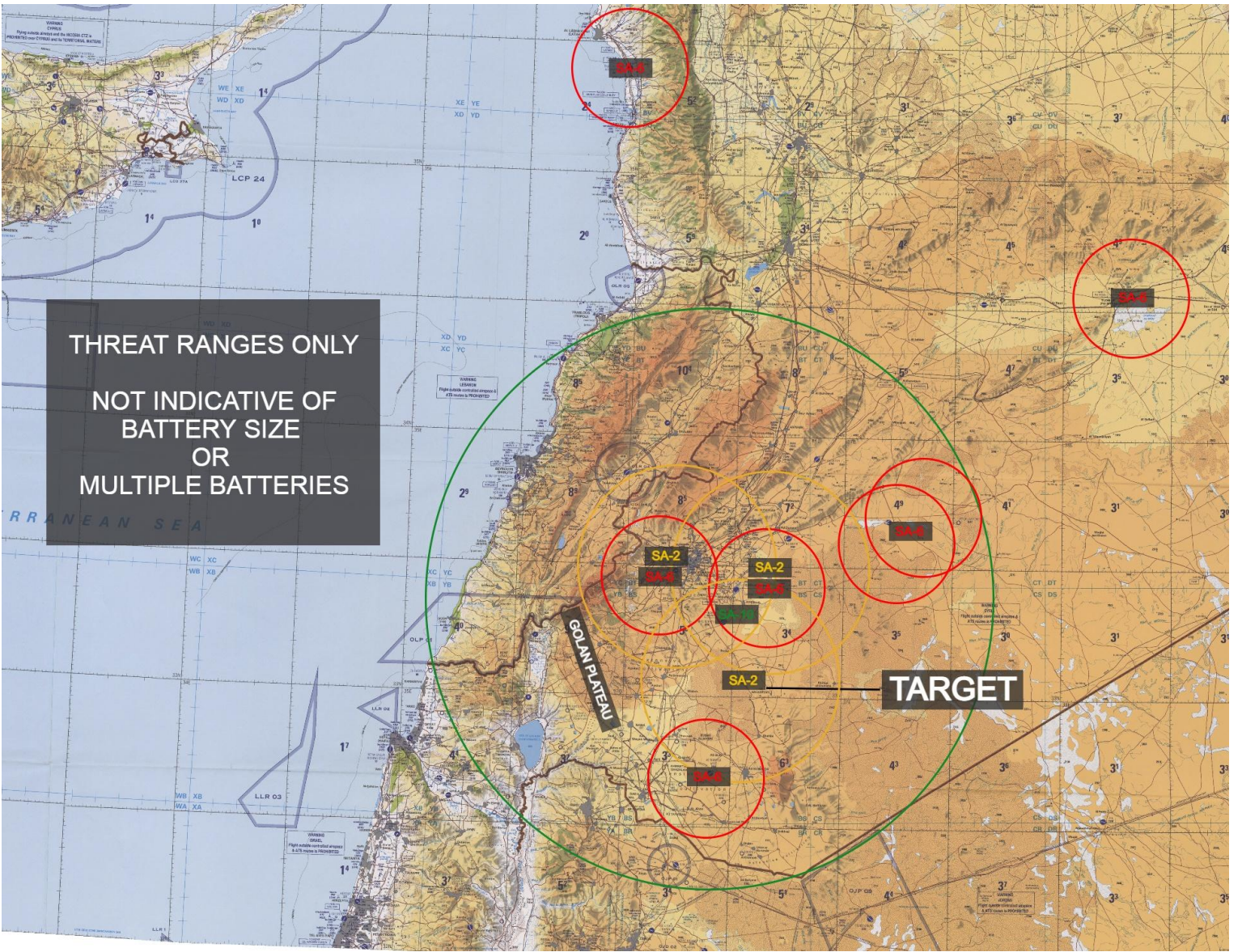
**Threats:**

3 x SA-2 batteries in the vicinity of Khalkhalah AB.

SA-8, AAA and MANPAD located at Khalkhalah AB.

Additional SA-2, SA-6, SA-10 and SA-11 batteries also cover the target (see threat map for details).

Numerous SAA bases lie between Khalkhalah AB and Damascus, except AAA and MANPAD systems in their vicinity.



**THREAT RANGES ONLY**  
**NOT INDICATIVE OF**  
**BATTERY SIZE**  
**OR**  
**MULTIPLE BATTERIES**

**SA-2**

**SA-2**

**SA-2**  
**SA-2**

**SA-2**  
**SA-2**

**SA-2**

**GOLAN PLATEAU**

**TARGET**

**SA-2**