

OCN SORTIE # 230713/4**Flight:**

Call Sign	Tail	Freq	TCN	Role	T/O Time	TOT	End Vul
Devil 1-1	301	260	92X	Strike	01:14	01:59	02:11
Devil 1-2	309	260	N/A	Strike	01:17	01:59	02:11
Devil 1-3	303	260	86X	Strike	01:15	01:59	02:11
Devil 1-4	305	260	79X	Strike	01:16	01:59	02:11

Mission Support:

Call Sign	Freq	Role	Notes
Sentinel	236.8	ABCCC	
Sentinel Actual	240.4	Mission Commander	
Shell	331.8	AAR	TACAN 98Y
Arco	308.2	AAR	TACAN 74X
Texaco	354.6	AAR	TACAN 66X
Spartan 1	236.4	EW	End Vul 02:11
Spartan 2	341.8	EW	End Vul 02:11
Spartan 3	240.2	EW	End Vul 02:11
Spartan 4	254.2	EW	End Vul 02:11
Cobra 1	298.0	SEAD	End Vul 02:10
Cobra 2	331.6	SEAD	End Vul 02:10
Cobra 3	350.2	SEAD	End Vul 02:10
Cobra 4	347.4	SEAD	End Vul 02:10
Hammer	274.2	Strike	End Vul 02:02
Cowboy	289.0	Strike	End Vul 02:05
Bear	300.2	OCA	End Vul 02:06

Loadout:

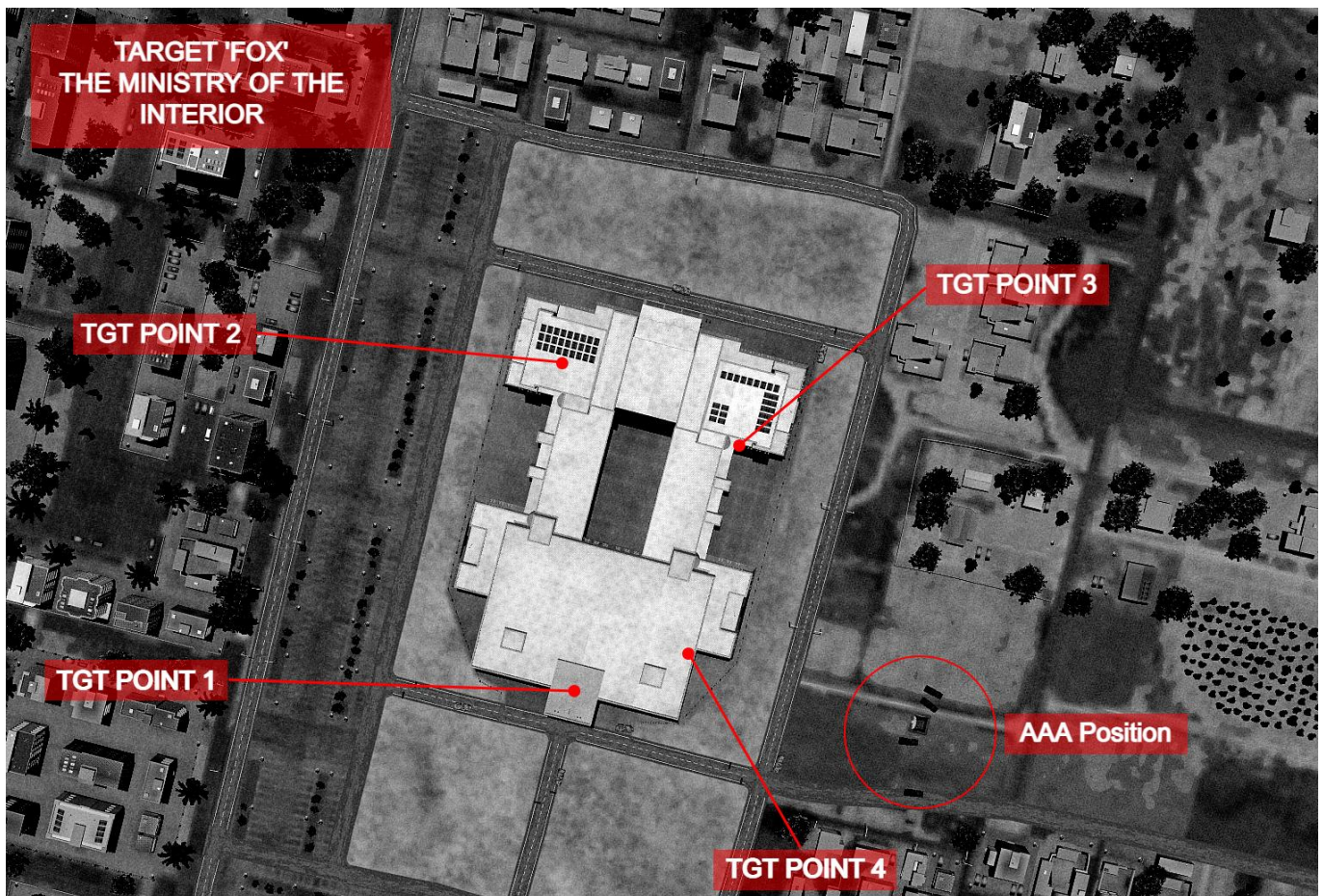
Station 1	AIM-9M	Station 5	FPU-8A Fuel Tank
Station 2	2 x GBU-12	Station 6	AIM-120C
Station 3	GBU-24 Paveway III	Station 7	FPU-8A Fuel Tank
Station 4	LITENING TGP	Station 8	2 x GBU-12
Countermeasures	60 CHAFF, 30 FLARE	Station 9	AIM-9M
Fuel	15,291	Gross Weight	49,110

Weather:

Clouds	Wind	Temperature	Precipitation
Few 13	060 @ 2 Kn GL 231 @ 5 Kn 6600 ft 137 @ 10 Kn 26000 ft	16°C	None

Primary Objective:

Target Fox - target point 2.



Secondary Objective:

Golf 2

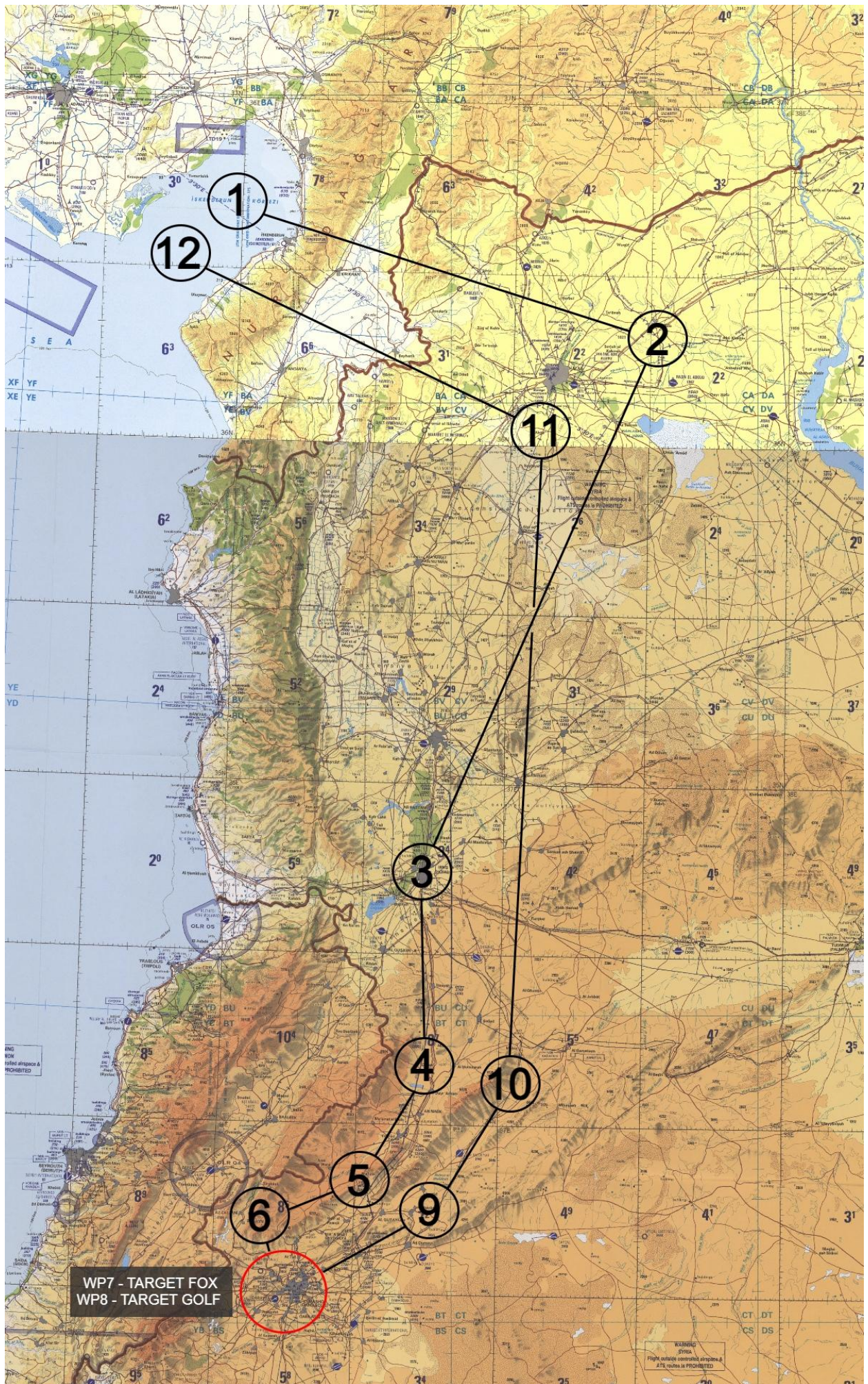
Any T-72s located within the 4th AD position.





Flight Plan:

WP	Alt Kft	Mach	Notes
1	27.5	0.75	RV Flight
2	30	0.75	Aleppo
3	30	0.75	
4	30	0.75	YANKEE
5	30	0.75	
6	30	0.75	IP
7			Target Fox
8			Target Golf
9	30	0.75	
10	30	0.75	
11	30	0.75	
12	20	0.75	MTCA
			BULLS N 35°43'59" E 37°06'17"



WP7 - TARGET FOX
WP8 - TARGET GOLF

Fuel Plan:

Stage	Notes	Target Fuel lb
Takeoff		14,721
Departure	<i>To 25k Ft</i>	13,491
WP1	<i>FL250, M0.75</i>	12,701
WP2	<i>FL300, M0.75</i>	11,351
WP3	<i>FL300, M.075</i>	9,847
WP4	<i>FL300, M.075</i>	9,320
WP6	<i>FL300, M.075</i>	8,762
Joker = 7,629		
Bingo = 6,879		
WP10	<i>FL300, M.075</i>	6,109
WP11	<i>FL300, M.075</i>	4,669
WP12	<i>FL200, M0.75</i>	3,689
Land		1,769

Radio Plan:

Channel	Comm 1	Freq	Comm 2	Freq
1	<i>INK Ground</i>	250.2	<i>INK Ground</i>	128.1
2	<i>Devil 1</i>	260	<i>INK Tower</i>	128.2
3	<i>Cobra 1</i>	298.0	<i>INK Departure</i>	128.5
4	<i>Cobra 2</i>	331.6	<i>INK Approach</i>	128.3
5	<i>Cobra 3</i>	350.2	<i>INK Arrival</i>	128.4
6	<i>Cobra 4</i>	347.4	<i>INK ATIS</i>	128.95
7	<i>Spartan 1</i>	236.4	<i>INK Emergency</i>	128.7
8	<i>Spartan 2</i>	341.8	<i>Sentinel</i>	236.8
9	<i>Spartan 3</i>	240.2	<i>Sentinel Actual</i>	240.4
10	<i>Spartan 4</i>	254.2	<i>Texaco</i>	354.6
11	<i>Hammer</i>	274.2	<i>Shell</i>	331.8
12	<i>Cowboy</i>	289.0	<i>Arco</i>	308.2
13	<i>Bear</i>	300.2	<i>Strike</i>	369.250

