

Date: 19/07/13

Callsign: Sword 2-1

ATO Syria

Mission# 1881	Step 14:10Z	Startup 15:00Z	Takeoff 15:10Z
----------------------	--------------------	-----------------------	-----------------------

TGT Area Marj Ruhayyil TOT 15:34Z	Weather 37°C Scattered Clouds ~ 10,000ft Winds 210 1 Kn @ GL Winds 252 4 Kn @ 6600 Winds 160 7 Kn @ 26000
--	--

A/C#	Pilot	Spot
942	Forrest - Sword 2-1	8
966	Bug- Sword 2-2	12

Loadout							Gun - SAPHEI			
9	8	7	6	5R	5	5L	4	3	2	1
120C	9M	GBU 24	Fuel	TGP	ALQ 184L	HTS	Fuel	GBU 24	9M	120C

Fuel **12,113 lb** Gross Weight **41,921 lb**

90 Chaff 30 Flares

Date: **19/07/13**Callsign: **Sword 2-1**

ATO Syria

Function	Callsign	Freq	
ABCCC	Sentinel	236.800	
Rivet Joint	Vacuum	293.400	
AWACS West	Darkstar	287.625	
AWACS East	Magic	283.150	
AAR West	Arco	308.200	74 X
AAR North	Texaco	354.600	66 X
AAR East	Shell	331.800	89 Y

H4 Airbase		COMM 1 UHF		COMM 2 VHF
Ground	116.350	Darkstar	1	H4 Ground
Tower	117.500	Magic	2	H4 Tower
Depart	117.250	Arco	3	H4 Departure
Approach	118.100	Shell	4	H4 Approach
Arrival	118.600	Texaco	5	H4 Arrival
Emrg'cy	126.700	Sentinel	6	H4 Emergency
TACAN	125 X	Vacuum	7	Sword
		Spartan 1	8	Yellow 1
		Bear 1	9	Yellow 2
		Bear 2	10	Yellow 3
		Pink 1	11	Purple 1
		Pink 2	12	Purple 2
		Pink 3	13	Cobalt 1
		Green 1	14	Cobalt 2
		Green 2	15	Yellow 1
		Red 1	16	Yellow 2
		Red 2	17	Indigo 1
		Blue 1	18	Indigo 2
		Blue 2	19	Magenta 1
		Blue 3	20	Magenta 2

Sword 140.6

Date: 19/07/13

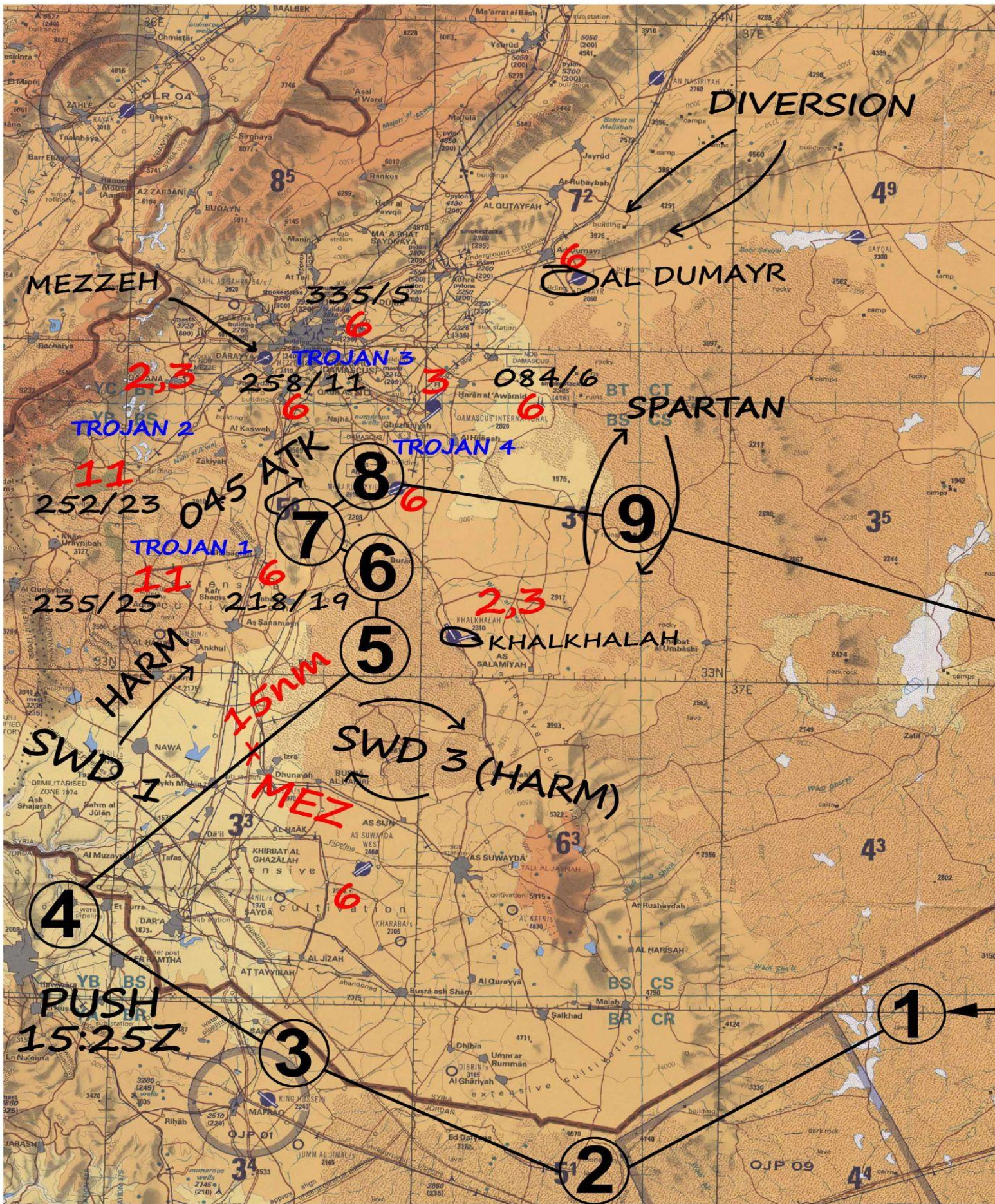
Callsign: Sword 2-1

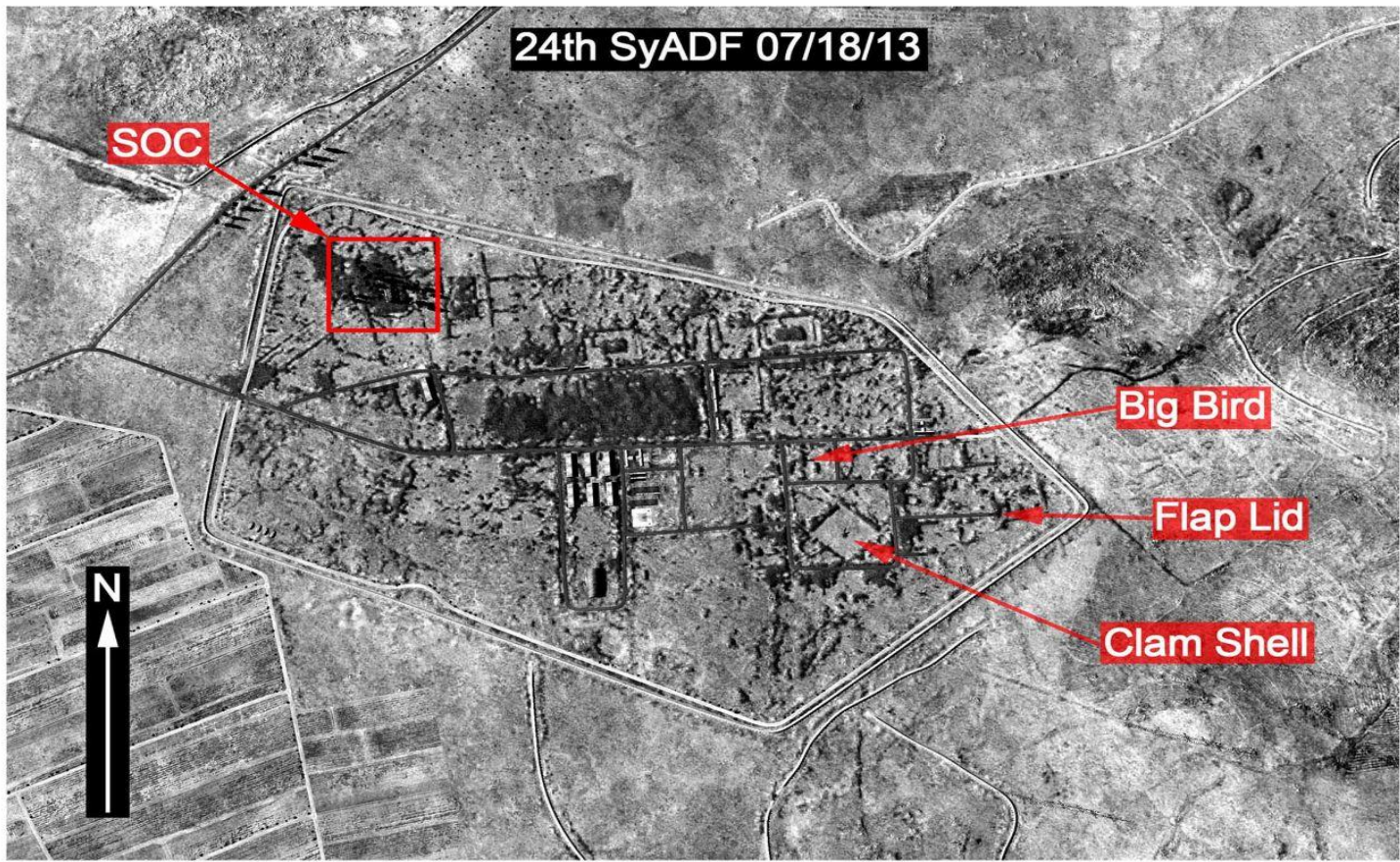
ATO Syria

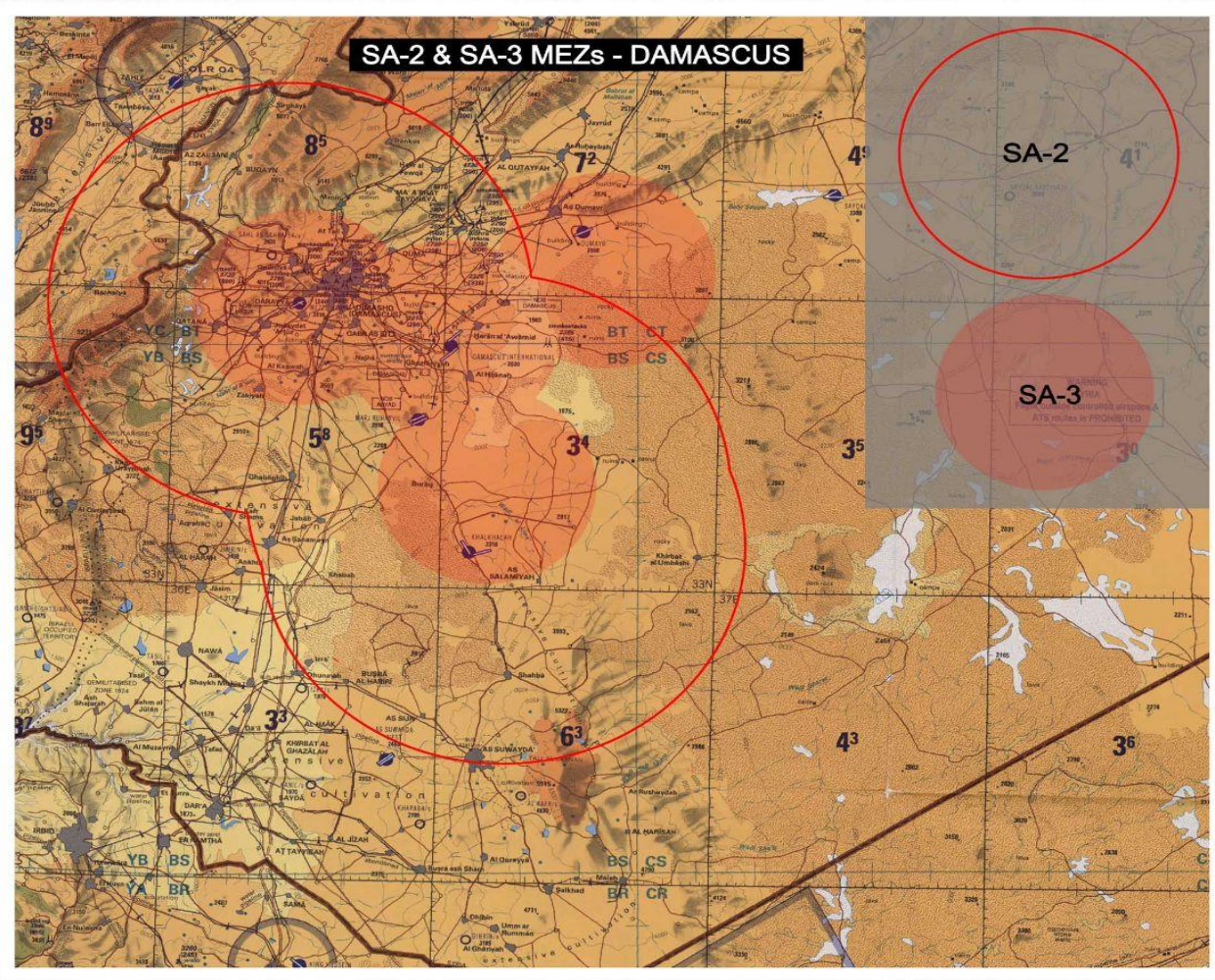
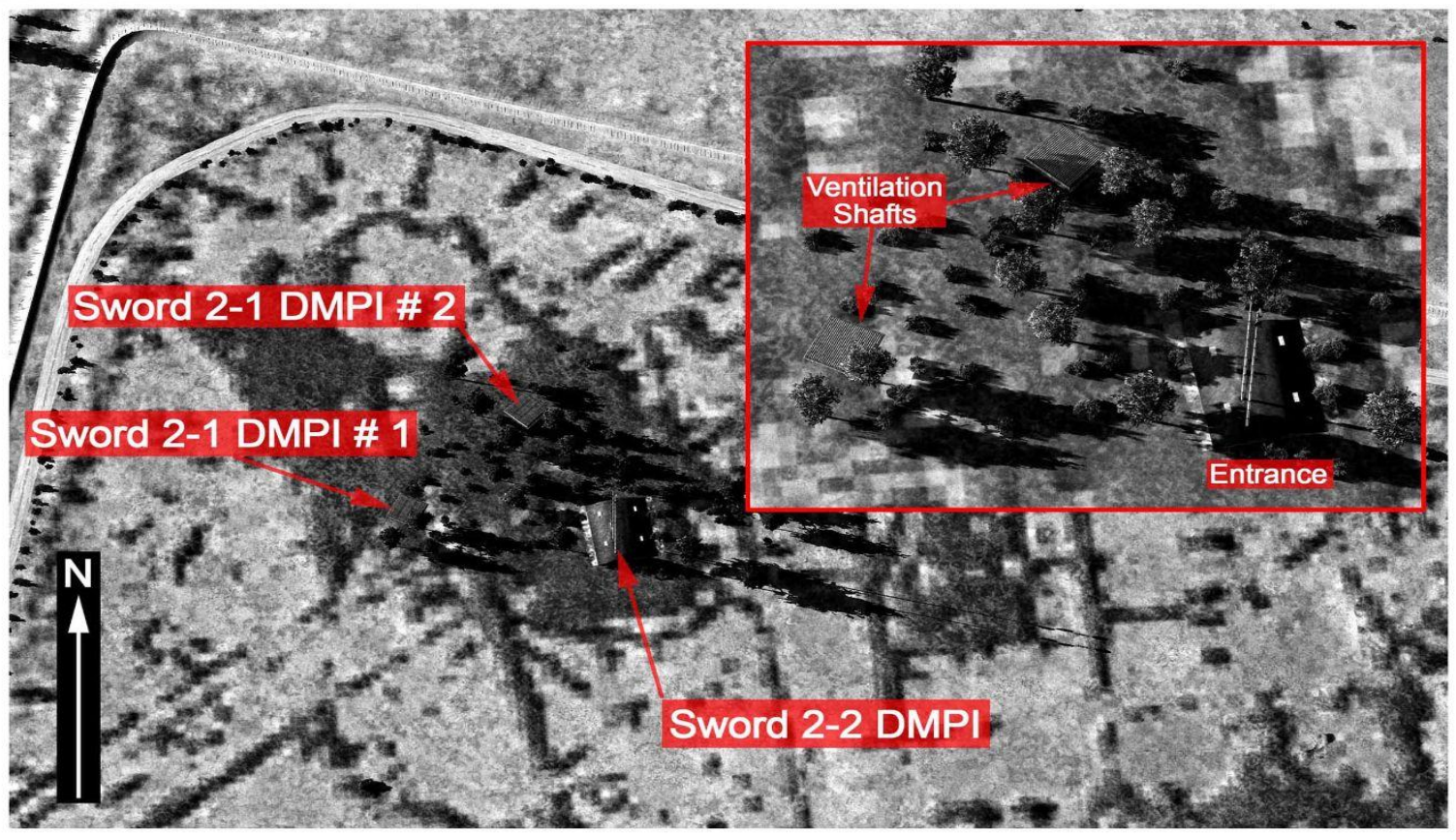
Flight Plan	WP	Fuel Plan
RV - 25k'	1	10,320 lb
MO.65, 25K'	2	9,900 lb
MO.65, 25K'	3	9,522 lb
MO.65, 25K' PUSH	4	9,214 lb
INGRESS	5	↓
INGRESS	6	
IP	7	
TARGET	8	8,070 lb
EGRESS	9	3270 lb
MO.75, 20K'	10	2883 lb
APPROACH ALPHA	11	
APPROACH BRAVO	12	
H4	13	1268 lb

Bullseye: DIAP

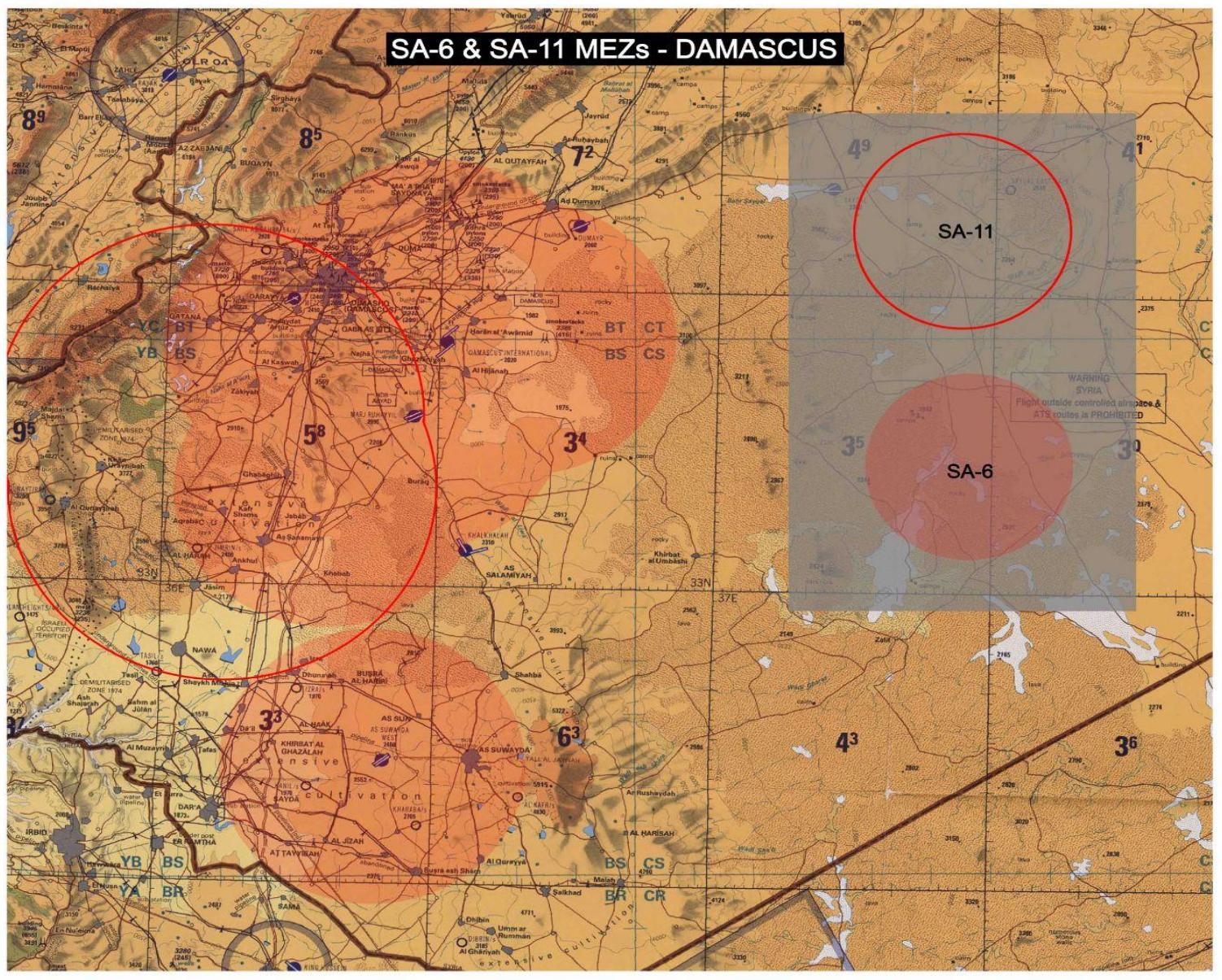
Bingo 4050 lb







SA-6 & SA-11 MEZs - DAMASCUS



THREATS & CODES:

- SA-2: MEZ = 23nm, Max alt = 82,000 ft HAD Class 2
- SA-3: MEZ = 10nm, Max alt = 59,000 ft HAD Class 2
- SA-6: MEZ = 15nm, Max alt = 40,000 ft HAD Class 2
- SA-8: MEZ = 6nm, Max alt = 16,000 ft / 39,000 ft HAD Class 2
- SA-10: MEZ = 65nm, Max alt = 95,000 ft HAD Class 1
- SA-11: MEZ = 20nm, Max alt = 72,000 ft HAD Class 1
- SA-15: MEZ = 8nm, Max alt = 25,000 ft HAD Class 1
- MANPAD/SA-9: MEZ = 3nm, Max alt = 12,000 ft