

OPERATION RAPID EAGLE 11/15/11

Flight:

Pilot	Call Sign	Side #	Freq	Role	T/O Time	TOT	End Vul
Mike-Mike	Hellcat 1-1	053	260	XCAS	13:25	13:40	14:25
Ein-Stein	Hellcat 1-2	101	260	XCAS	13:15	13:40	14:25

Loadout:

7 6 5 4B 4A 3 2 1

Station 7	MK-20	Station 4B	GAU-12	Station 3	FUEL
Station 6	2 x MK-82	Ammo	SAPHEI-T	Station 2	2 x MK-82
Station 5	FUEL	Station 4A		Station 1	MK-20

Fuel	11,764 LB
Gross Weight	31,140 LB

Countermeasure Bins:

Top Front Left	30 Chaff
Top Front Right	30 Chaff
Top Rear Left	30 Flares
Top Rear Right	30 Flares
Bottom Left	30 Flares
Bottom Right	30 Flares

Weather:

Clouds	Wind	Temperature	Precipitation
Broken Clouds 13-18 Kft	129 @ 8Kn GL 265 @ 11Kn 6600 ft 214 @ 23Kn 26000 ft	16°C	N/A

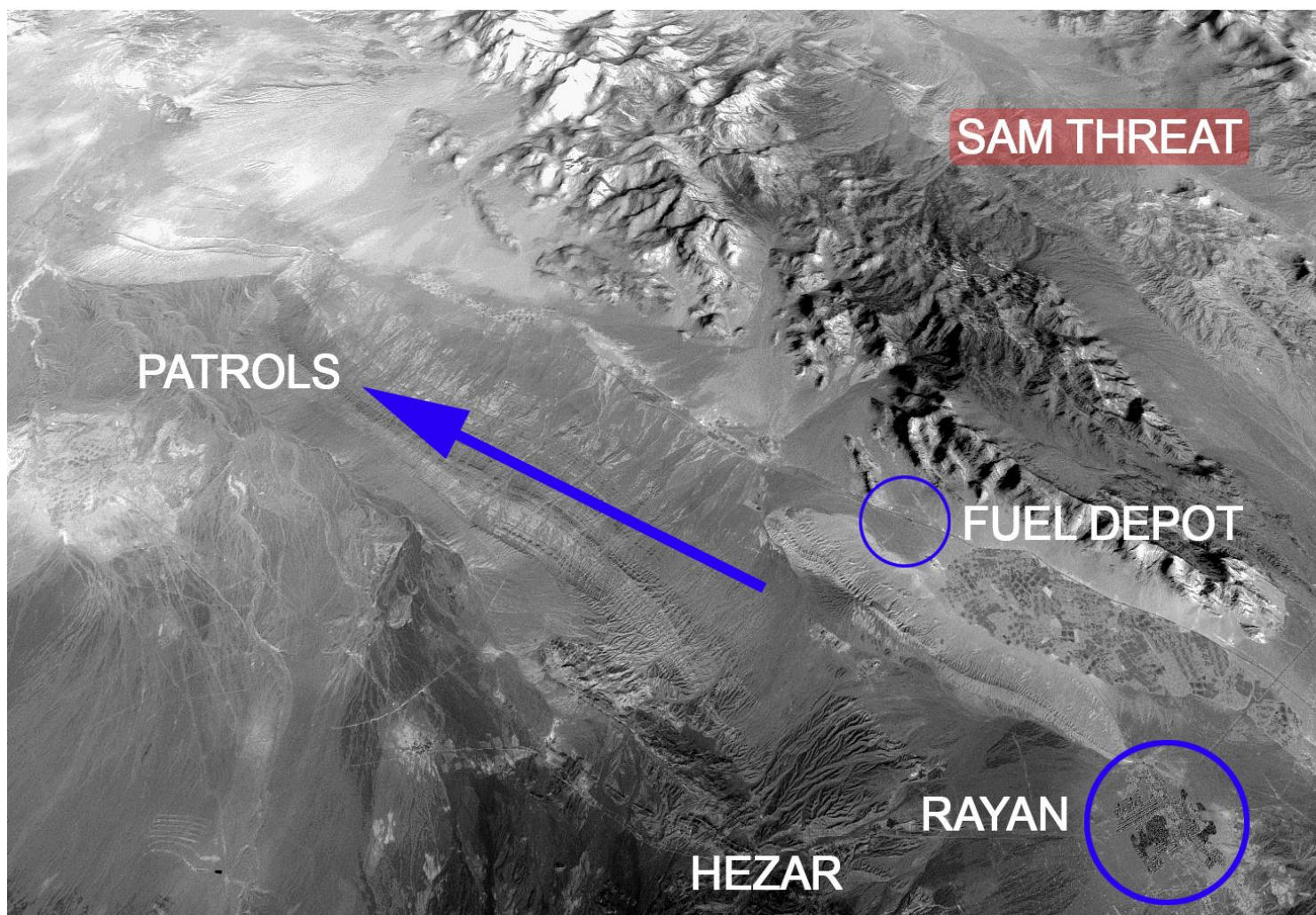
OPERATION RAPID EAGLE 11/15/11

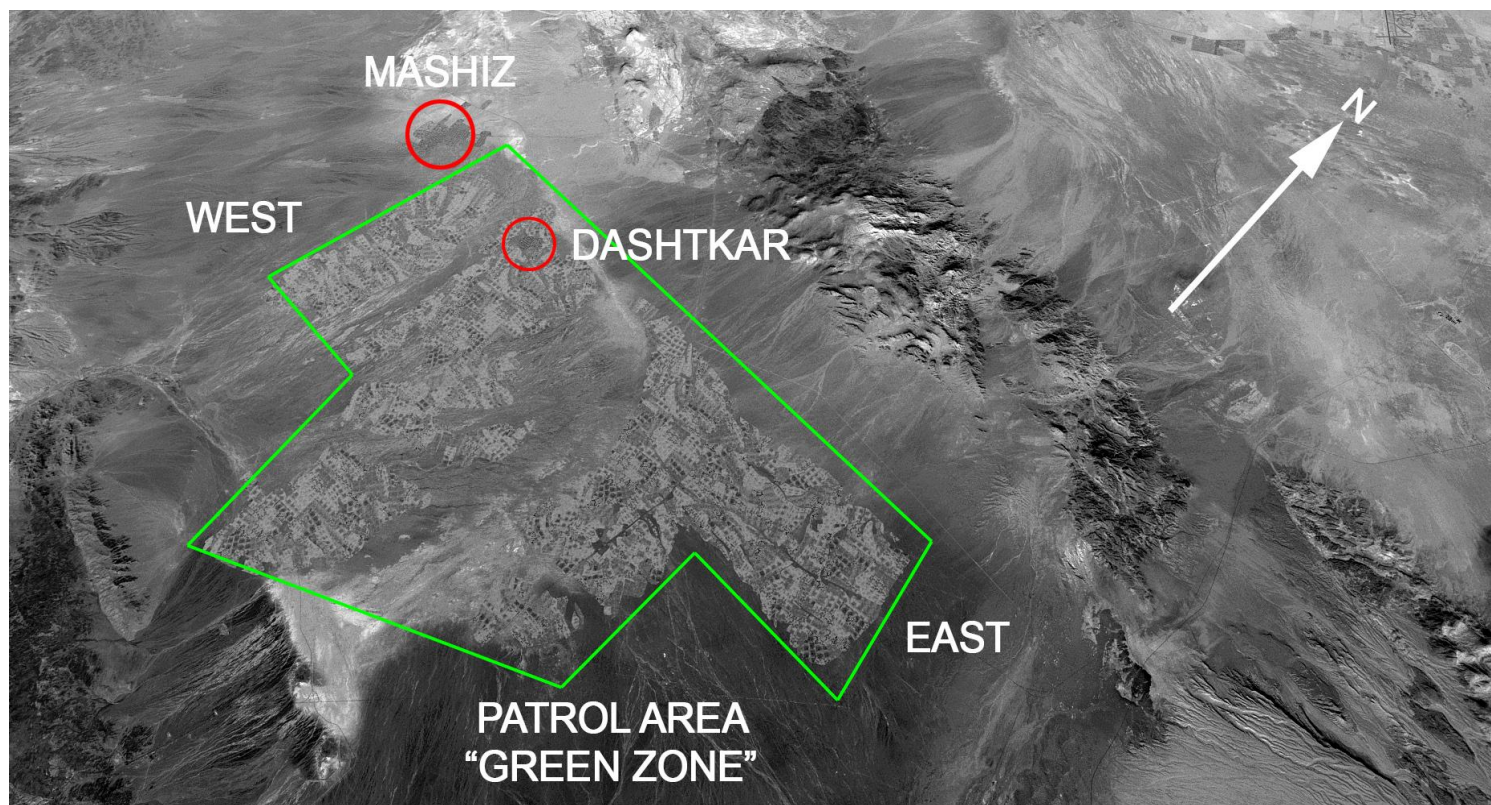
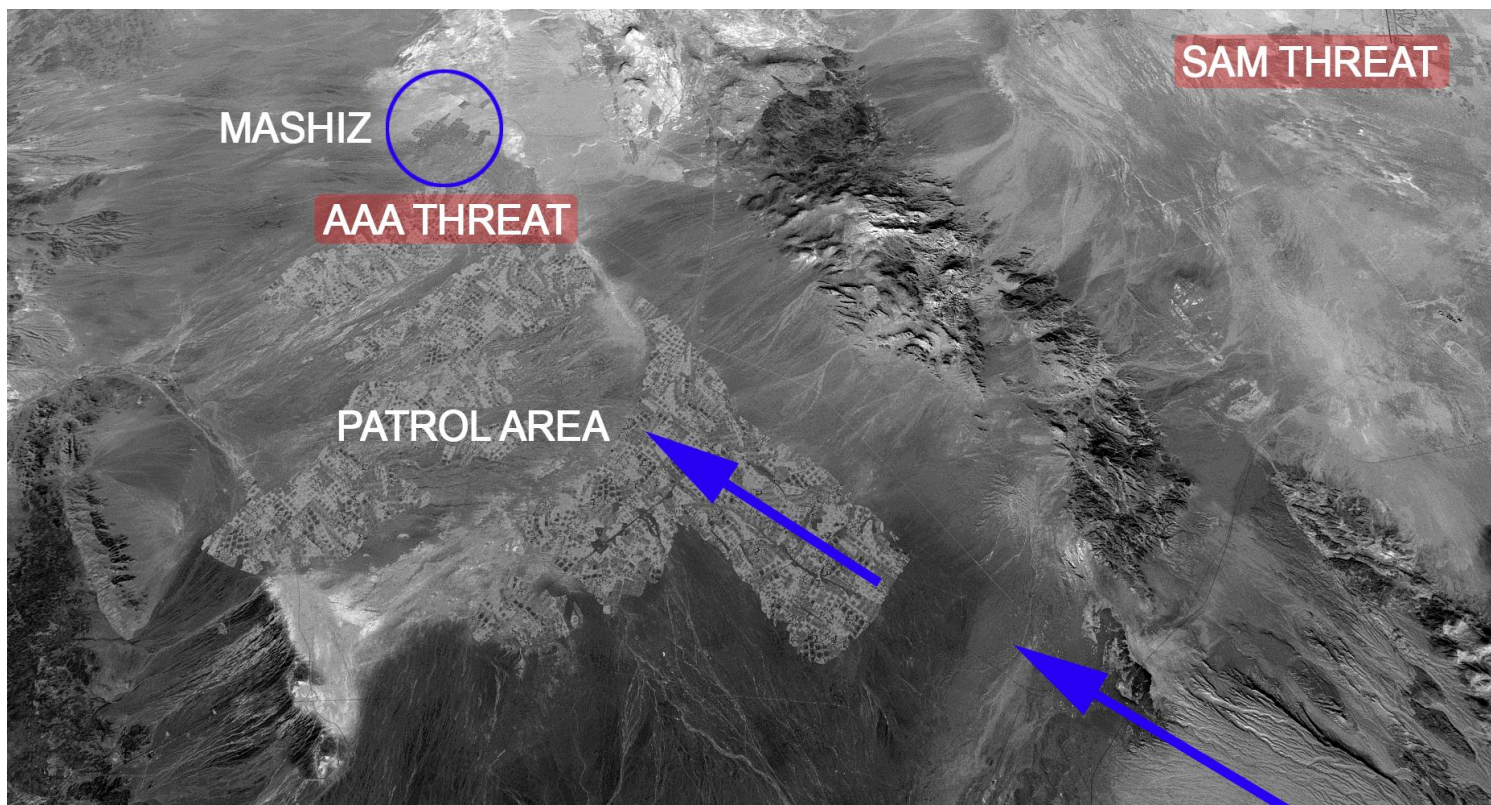
Mission Support:

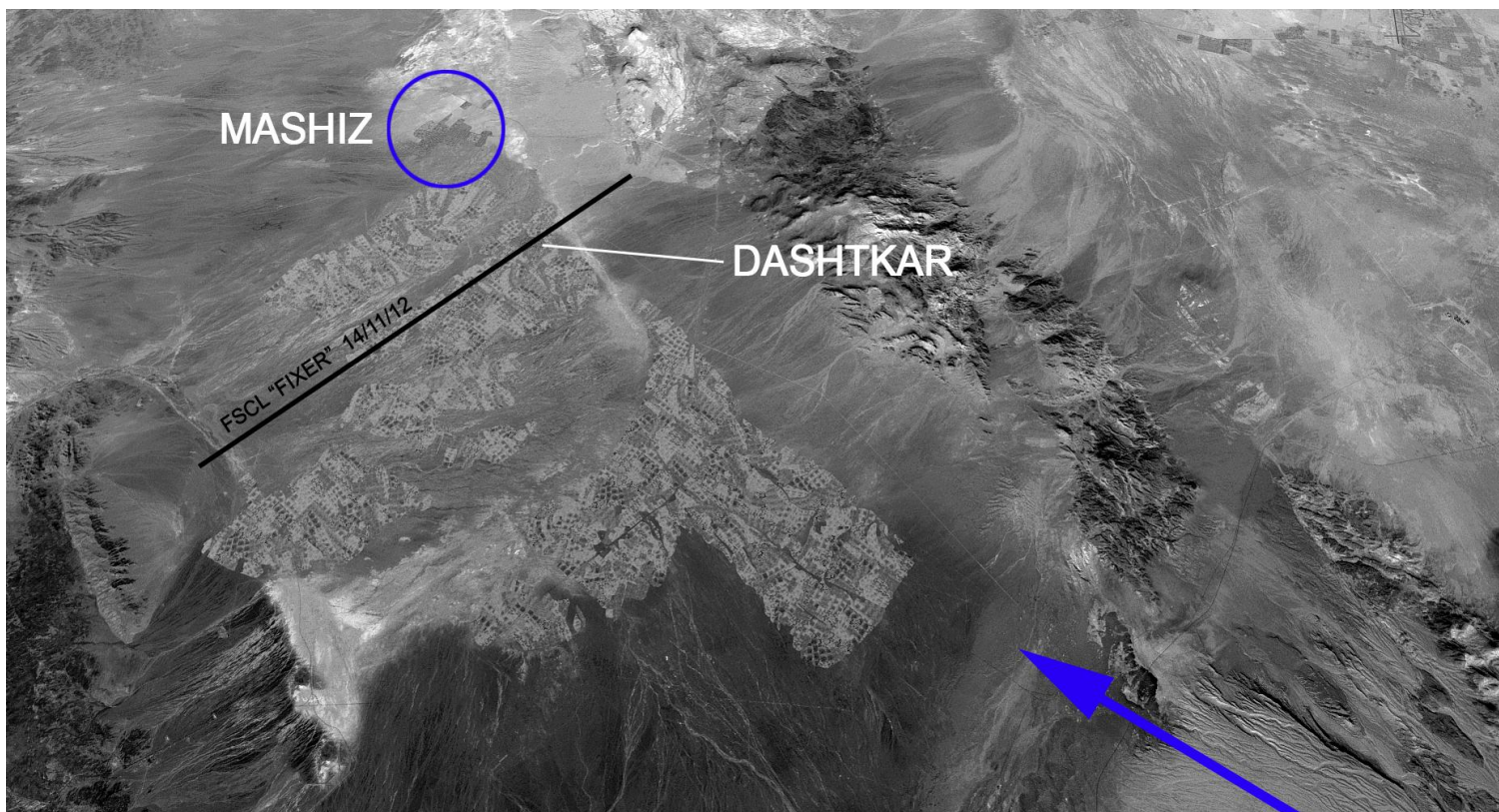
Call Sign	Type	Frequency	Role	Notes
Chieftain	C-130	291.5	DASC	
Steel Rain	Ground	181.6	FFCC	
Sandman 5	Ground	310.1	FAC (Command)	

Mission:

XCAS patrol in RCT 5 and 1st Recon's patrol area - 'green zone' east of Mashiz.



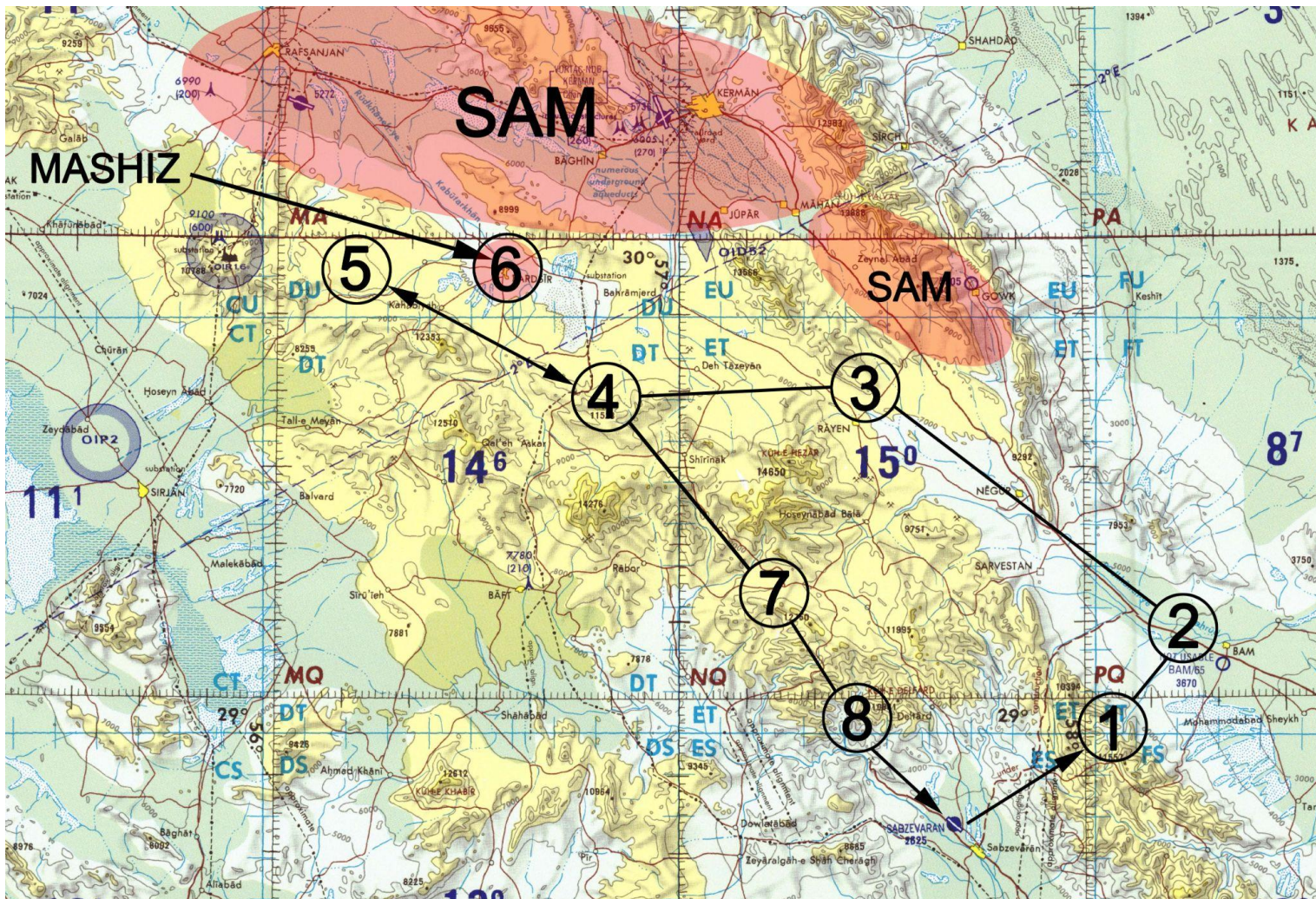




Flight Plan:

Waypoint	Alt (Ft MSL)	Mach	Notes
1	20	0.7	RV Ein-Stein
2	23	0.7	
3	23	0.7	Rayan
4	23	0.7	XCAS
5	23	0.7	XCAS
6			Mashiz
7	23	0.7	
8	23	0.7	
9			Land FOB Juliet
			BULLS N29°30'55", E57°16 '24"

OPERATION RAPID EAGLE 11/15/11



Fuel Plan:

Stage	Notes	Target Fuel lb
STARTING FUEL		11700
WP1	<i>23 Kft @ M0.7</i>	10164
WP2	<i>23 Kft @ M0.7</i>	9324
WP3	<i>23 Kft @ M0.7</i>	8836
WP4	<i>23 Kft @ M0.7</i>	8448
WP5	<i>23 Kft @ M0.7</i>	7960
Bingo		3350
WP7	<i>23 Kft @ M0.7</i>	2544
WP8	JACZ	2184
WP9	LAND	634

OPERATION RAPID EAGLE 11/15/11**Radio Plan:**

Channel	Comm 1	Freq	Comm 2	Freq
1	<i>Juliet Ground</i>	<i>141.0</i>	<i>Juliet Ground</i>	<i>141.0</i>
2	<i>Juliet Tower</i>	<i>141.5</i>	<i>Hellcat 1</i>	<i>260.0</i>
3	<i>Juliet Departure</i>	<i>142.25</i>	<i>Reaper</i>	<i>284.4</i>
4	<i>Juliet Arrival</i>	<i>142.6</i>	<i>Wolf</i>	<i>267.0</i>
5	<i>Juliet Emergency</i>	<i>143.1</i>	<i>Sandman 5</i>	<i>310.1</i>
6	<i>Chieftain</i>	<i>291.5</i>	<i>Sandman 5-1</i>	<i>312.2</i>
7	<i>Steel Rain</i>	<i>281.6</i>	<i>Sandman 5-2</i>	<i>314.8</i>
8	<i>Iceman</i>	<i>185.7</i>	<i>Sandman 5-3</i>	<i>316.0</i>
9	<i>Fixer</i>	<i>189.0</i>	<i>Sandman 5-4</i>	<i>317.6</i>
10	<i>Madman</i>	<i>193.2</i>	<i>Black</i>	<i>329.8</i>
11	<i>SPARE</i>	<i>--</i>	<i>White</i>	<i>266.8</i>
12	<i>SPARE</i>	<i>--</i>	<i>Red</i>	<i>312.0</i>
13	<i>SPARE</i>	<i>--</i>	<i>Orange</i>	<i>355.2</i>
14	<i>SPARE</i>	<i>--</i>	<i>Yellow</i>	<i>231.4</i>
15	<i>SPARE</i>	<i>--</i>	<i>Green</i>	<i>388.7</i>
16	<i>SPARE</i>	<i>--</i>	<i>Blue</i>	<i>251.5</i>
17	<i>SPARE</i>	<i>--</i>	<i>Indigo</i>	<i>363.4</i>
18	<i>SPARE</i>	<i>--</i>	<i>Violet</i>	<i>200.6</i>
19	<i>SPARE</i>	<i>--</i>	<i>Magenta</i>	<i>391.1</i>
20	<i>SPARE</i>	<i>--</i>	<i>Grey</i>	<i>241.3</i>
21	<i>SPARE</i>	<i>--</i>	<i>SPARE</i>	<i>--</i>
22	<i>SPARE</i>	<i>--</i>	<i>SPARE</i>	<i>--</i>
23	<i>SPARE</i>	<i>--</i>	<i>SPARE</i>	<i>--</i>
24	<i>SPARE</i>	<i>--</i>	<i>SPARE</i>	<i>--</i>
25	<i>SPARE</i>	<i>--</i>	<i>SPARE</i>	<i>--</i>
26	<i>SPARE</i>	<i>--</i>	<i>SPARE</i>	<i>--</i>

Threats:

MIM-23 HAWK	
Guidance Type	Semi Active Radar Homing
Acquisition Range	49 nm
Max Engagement Range	25 nm
Max Ceiling	65,000 Ft MSL
Missile Mach	2.4
Warhead Type	119lb Frag HE
RWR Symbology	HA
Notable Features	<p>US manufactured SAM system.</p> <p>Typical battery consists of Command Post, Search Radar, Track Radar and up to 6 launchers (3 missiles each). Some batteries may also contain a Continuous Wave Acquisition Radar, designed for low altitude detection.</p> <p>Missile burn time ~ 25 seconds.</p>

HQ-7	
Guidance Type	Semi active radar homing
Acquisition Range	16 nm
Max Engagement Range	6 nm
Max Ceiling	17,000 Ft MSL
Missile Mach	2.3
Warhead Type	Frag HE
Fuzing	Proximity
RWR Symbology	HQ (SR), 7 (Weapons guidance)
Notable Features	<p>Self propelled, Chinese built low altitude SAM system.</p> <p>Typical battery configuration 1 x search radar vehicle, 3 x launch vehicles</p>

OPERATION RAPID EAGLE 11/15/11

SA-6 'GAINFUL'	
Guidance Type	Radar, command guidance, semi active radar homing
Acquisition Range	40 nm
Max Engagement Range	15 nm
Max Ceiling	40,000 Ft MSL
Missile Mach	2.8
Warhead Type	130lb Frag HE
Fuzing	Proximity/contact
RWR Symbology	6
Notable Features	Semi Active Radar Homing in terminal phase. Missile burn time ~ 21 seconds. Highly mobile, can be operational within 15 minutes of relocating. Typical configuration - 1 x Tracked 'Straight Flush' radar vehicle, 4 x tracked TEL's carrying 3 missile apiece.

SA-8 'GECKO'	
Guidance Type	Radar, command guidance
Acquisition Range	15 nm
Max Engagement Range	6 nm
Max Ceiling	39,000 Ft MSL
Missile Mach	2.0
Warhead Type	35lb Frag HE
Fuzing	Proximity/contact
RWR Symbology	8
Notable Features	Amphibious & highly mobile. Missile burn time ~ 15 seconds. 6 missile load.

OPERATION RAPID EAGLE 11/15/11

SA-18 'GROUSE'	
Guidance Type	Infra-Red
Acquisition Range	Visual
Max Engagement Range	3 nm
Max Ceiling	12,000 Ft MSL
Missile Mach	1.9
Warhead Type	2.6lb Frag HE
Fuzing	Contact / Grazing
Notable Features	Man Portable Air Defence (MANPAD), highly mobile and easy to hide. May operate in teams of shooter/spotter, communicating over distance to ambush targets.

ZU-23 AAA	
Guidance Type	None
Acquisition Range	Visual
Max Engagement Range	1.5 nm
Max Ceiling	7,000 Ft MSL
Notable Features	Twin 23mm autocannon. Towed system, easy to relocate. Cheap and widely proliferated. Can be truck mounted for a highly mobile, low cost air defence platform. Fires HE rounds that explode on contact or at set altitude.

OPERATION RAPID EAGLE 11/15/11

S-60 AAA	
Guidance Type	None
Acquisition Range	Visual
Max Engagement Range	3 nm
Max Ceiling	20,000 Ft MSL
Notable Features	Single 57mm autocannon. Capable of firing over 70 rounds per minute. Towed system, easy to relocate. Cheap and widely proliferated. Fires HE rounds that explode on contact or at set altitude.

ZSU-23-4 AAA	
Guidance Type	Radar
Acquisition Range	2.5 nm
Max Engagement Range	1.5 nm
Max Ceiling	7,000 Ft MSL
RWR Symbology	A
Notable Features	Four x 23mm autocannon. Tracked and high mobile. Fires HE rounds that explode on contact or at set altitude.

ZU-57-2	
Guidance Type	None
Acquisition Range	Visual
Max Engagement Range	3 nm
Max Ceiling	20,000 Ft MSL
Notable Features	2 x 57mm autocannon. Tracked, self-propelled system. Uses a version of the widely proliferated S-60 AA cannon.