

Flight	Aircraft	Tail	Comms	T/O Time	Push Time	Time on Target	End Vul	Assignment
Gunman 2-1	A-10	003	260 AM	14:10	14:37	15:00	16:00	CAS
Gunman 2-2	A-10	007	260 AM	14:05	14:37	15:00	16:00	CAS

		Chan	ILS	TCN	Countermeasures	180 Chaff, 150 Flare, ALQ-184
Depart	Khasab	129.6 AM	110.3		Loadout	CM Gun 100% load 4 x AGM-65D 2 x GBU-38 2 x GBU-12 Litening TGP
Arrival	Khasab	129.6 AM	110.3		Fuel	11,087 lb
Alternate	Bandar Abbas	122.4	109.9	78X	Total Weight	44,350 lb

Flight Plan

WP	Alt (k ft)	IAS (Kn)	Notes	WP	Alt (k ft)	IAS (Kn)	Notes
1	5	230		7	15	230	Egress
2	15	230	Check in Overlord FEET DRY	8	15	230	
3	15	230		9	15	230	
4	15	230		10	5	230	
5	15	230	MARSHALL	11			Land
6	15	230	Jiroft **SA-6**				

Joker Fuel 2000 lb

Bingo Fuel 1500 lb

~~New Loadout: 2 x AGM-65D, 2 x GBU-12, 2 x MK-82~~

~~Total weight = 42,909 lb~~

New Loadout: 4 x AGM-65D, 3 x GBU-12, 3 x GBU-38

Total weight = 45,678 lb

Mission Elements

Callsign	Comms
Overlord	128.5 AM
Whiplash	51.5 FM

Comms

Channel	VHF AM	UHF	VHF FM
1	Khasab ATC	Guard	Whiplash
2	Overlord	Gunman	Anvil 1-1
3		CAP Colt	Anvil 1-2
4		CAP Dodge	Anvil 1-3
5		CAP Ford	Anvil 2-1
6			Anvil 2-2
7			Anvil 2-3
8			Hammer 1-1
9			Hammer 2-1
10			Hammer 3-1
11			Hammer 4-1

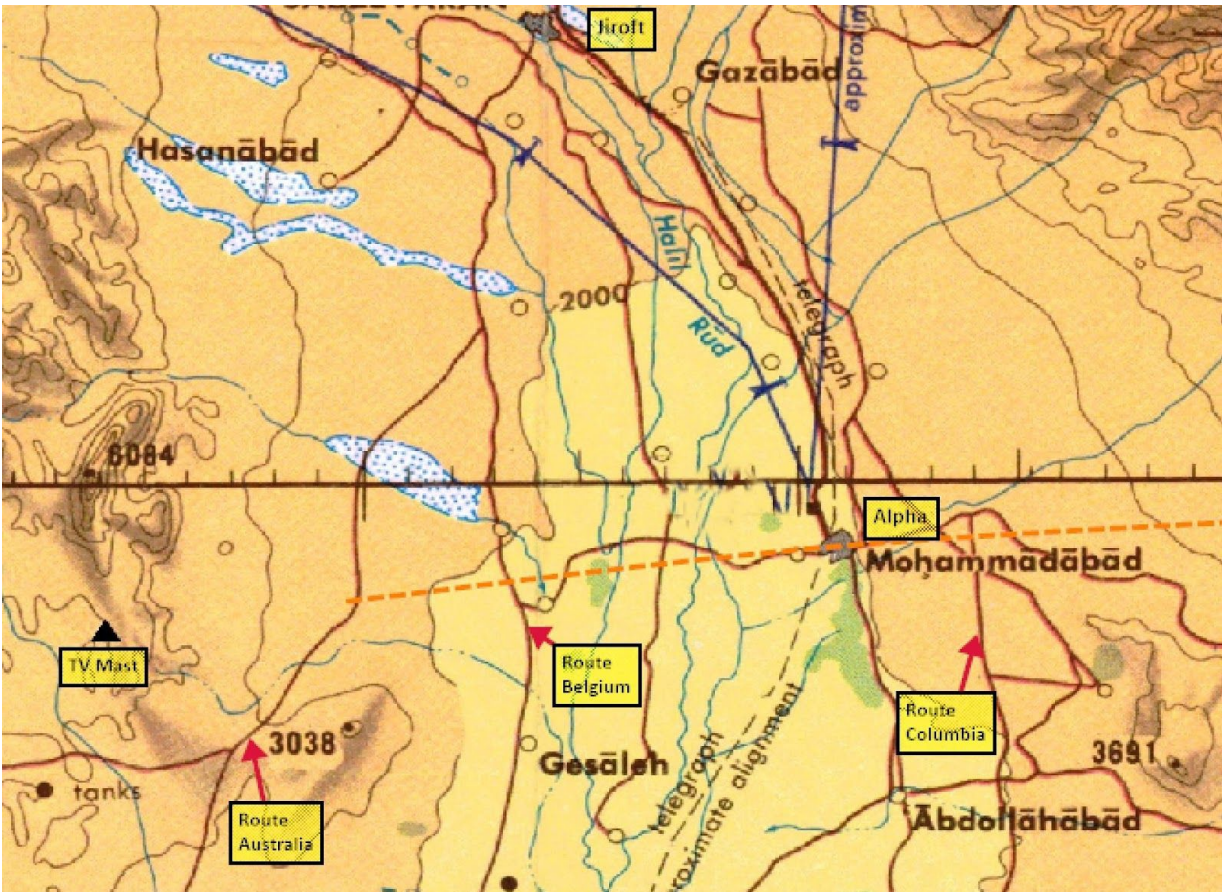
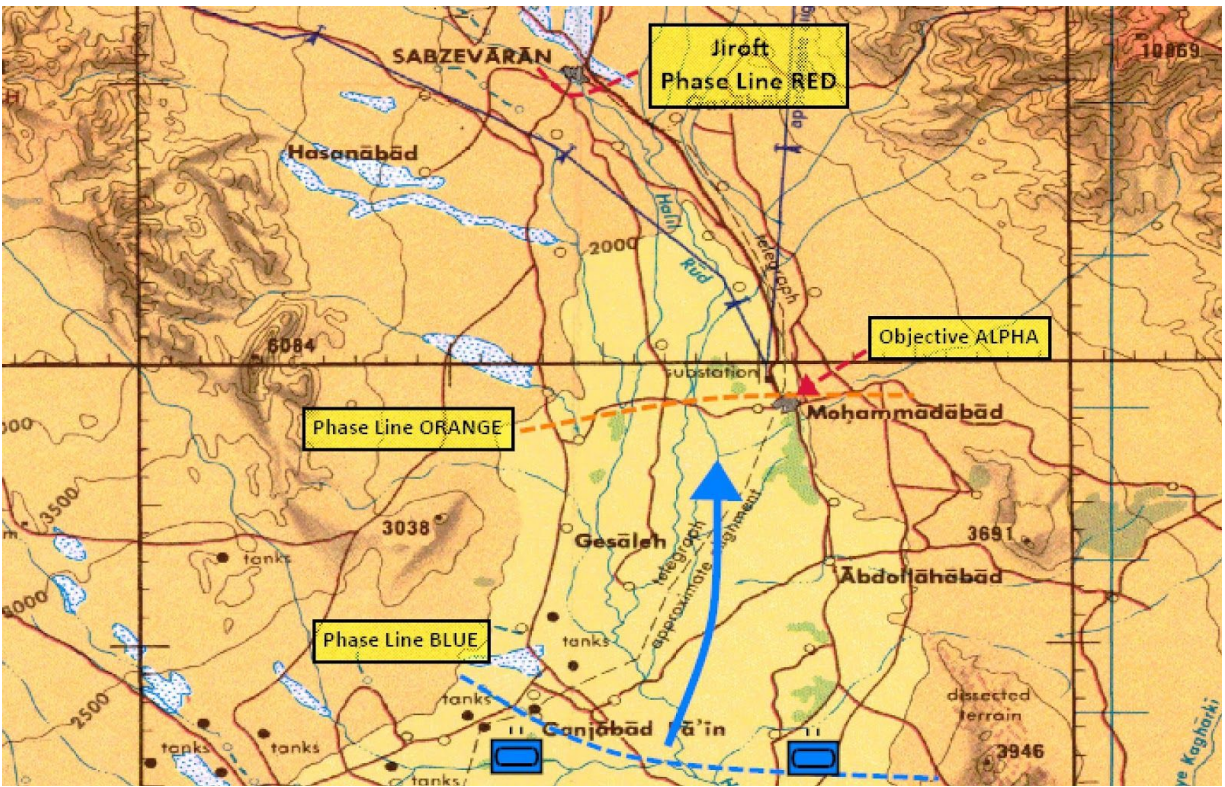
Weather

Wind = 086 4kn @ GL, 237 7Kn @ 6600, 245 35Kn @26000.

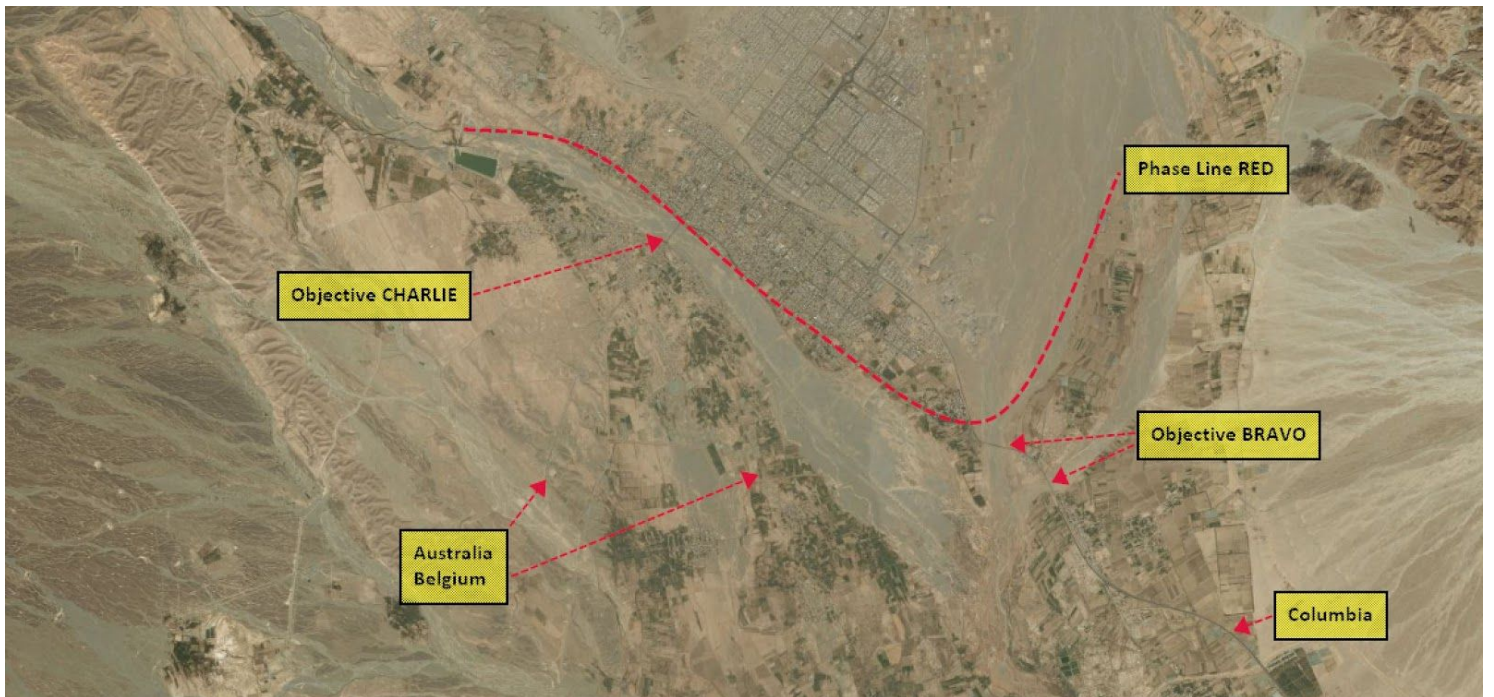
Temp 27C.

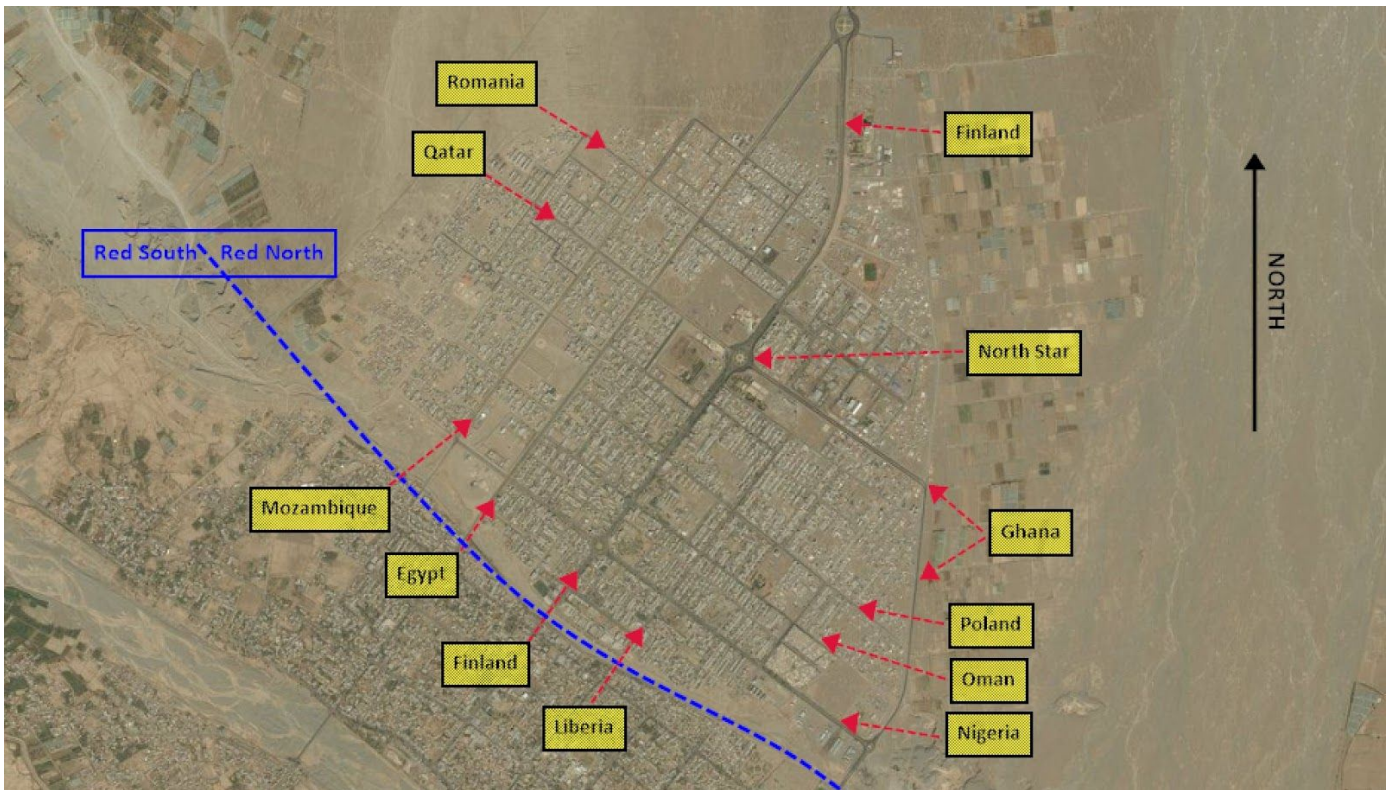
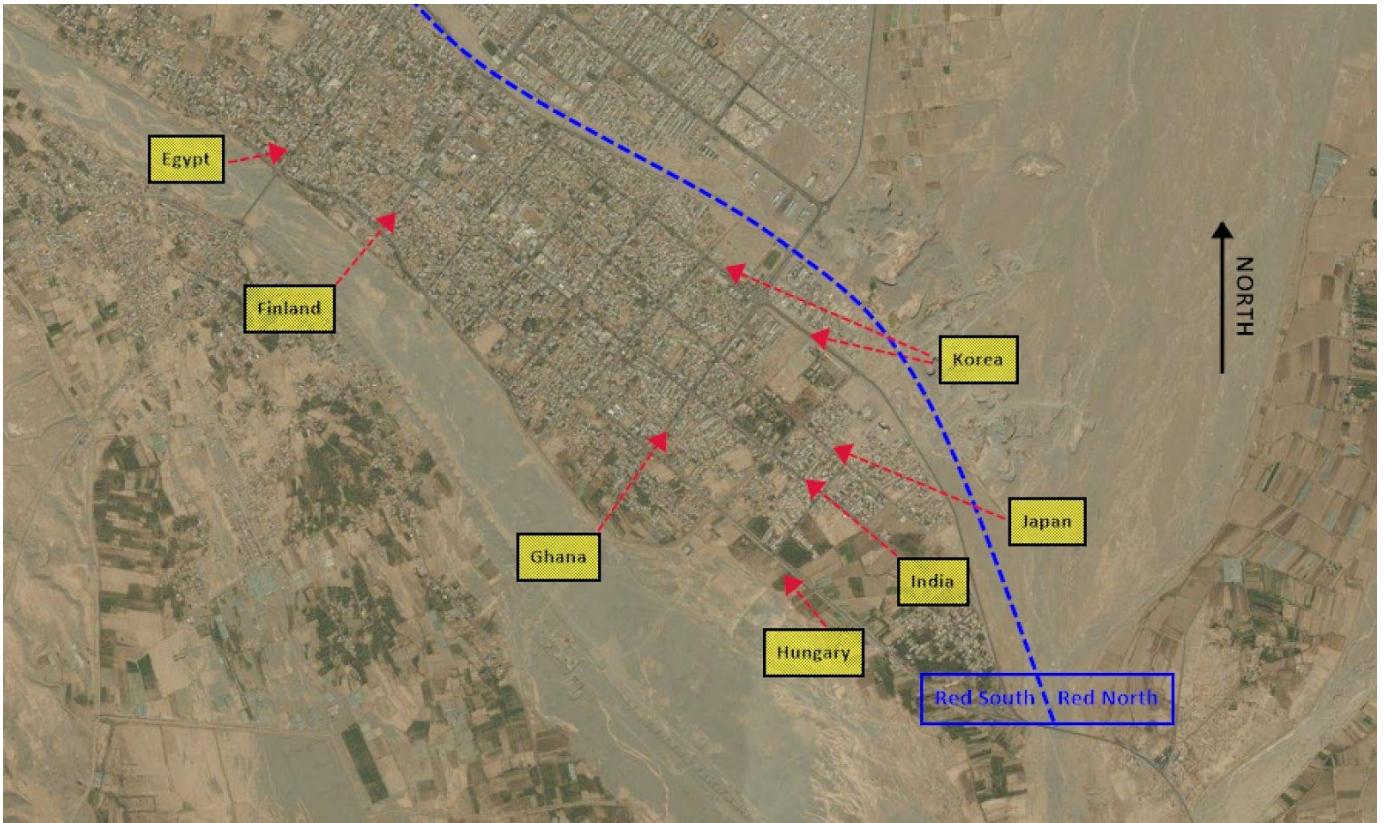
Clouds 4/10 coverage, 6500 ft base, 6000 ft depth.

Cloud is expected to build during the afternoon to form a solid overcast into the evening.



TV MAST 40R ES56388 46601





Threats

SR-P19 EWR

*Mobile Early Warning Radar
Acquisition Range ~ 85 nm*

SA-6 "Gainful"

*Radar Guided SAM
Acquisition Range ~ 40 nm
Engagement Range ~ 15 nm
Ceiling ~ 40,000 ft
Missile Mach ~ 2.8
Warhead - Prox / Contact 130lb
Salvo Size - 3*

SA-9 "Gaskin"

*Infra-Red Guided SAM
Detection Range - Visual
Engagement Range ~ 2.5 nm
Ceiling ~ 12,000 ft
Missile Mach ~ 1.8
Warhead - RF Proximity, 6lb
Salvo Size - 4*

SA-11 "Gadfly"

*Radar Guided SAM
Acquisition Range ~ 50 nm
Engagement Range ~ 20 nm
Ceiling ~ 72,000 ft
Missile Mach ~ 4
Warhead - RF Proximity 150lb
Salvo Size - 4*

SA-15 "Gauntlet"

*Radar Guided SAM
Acquisition Range ~ 15 nm
Engagement Range ~ 7 nm
Ceiling ~ 25,000 ft
Missile Mach ~ 2.5
Warhead - Proximity 30lb
Salvo Size - 8*

SA-18 "Grouse" MANPAD

*Portable Infra-Red Guided SAM
Detection Range - Visual
Engagement Range ~ 3 nm
Ceiling ~ 11,000 ft
Missile Mach ~ 1.9
Warhead - Contact, 2.6lb
Salvo Size - 1*

Threats

RWR	NAME	RWR	NAME	RWR	NAME
A	ZSU-24	P	Patriot	15	F-15
2	SA-2	PA	Patriot	16	F-16
3	SA-3	RO	Roland	18	F-18
6	SA-6	E2	E2 AWACS		
8	SA-8	E3	E3 AWACS		
10	SA-10 TR	50	A50 AWACS		
CS	SA-10 SR LowAlt	23	Mig-23		
BB	SA-10 SR	25	Mig-25		
11	SA-11	29	Mig-29 / SU-27		
SD	SA-11/17 SR	30	SU-30		
13	SA-13	31	Mig-31		
15	SA-15	34	SU-34		
DE	SA-15 SR	M2	M-2000		
HA	Hawk	4	F-4		
S	EW/GCI	5	F-5		
S6	SA-19	14	F-14		

Countermeasure Programmes

PROG	CHAFF QTY	FLARE QTY	INTERVAL (SEC)	CYCLE
A	2	0	1	10
B	4	0	0.5	10
C	0	4	1	10
D	2	2	1	10
E	2	2	0.5	10
F	4	4	1	10
G	4	4	0.5	10
H	1	0	1	1
I	2	0	1	1
J	0	1	1	1
K	0	2	1	1
L	1	0	1	20
M	0	1	1	20

CAS

9 Lines

1. Initial point (IP)
2. Heading from the IP to the target.
3. Distance from the IP to the target in nautical miles.
4. Target elevation in feet above mean sea level.
5. Target description.
6. Target location coordinates.
7. Type of mark.
8. Location of friendlies from the target, direction, and distance in meters.
9. Egress direction.

Terminology

Cleared hot - air support is cleared to engage the target.

Winter - this is the predetermined abort code in theatre. If the JTAC issues code winter or calls abort then the attacking aircraft must safety weapons systems and maneuver off target.

Contact - refers to spotting visual references used to talk onto a target.

Tally - Visual confirmation by the pilot of the target.

Visual- Visual confirmation of friendly forces.

ROE

Hostile Act considered if unit:

- Engages friendly forces with a weapons system.

OR

- Supports the weapons systems of other units, resulting in weapons release. Including but not limited to lasing, marking, radar illumination of targets.

Hostile Act considered if unit meets **all** the conditions below:

- Spikes/spots/marks a friendly target within their weapons range or the range of a supporting unit.
- Persistently maneuvers to maintain a weapons firing solution or to maintain solution for fire support.
- PosID as a bandit or belonging to a hostile force.

Hostile Act considered if unit meets **all** the conditions below:

- Moves in an aggressive manner towards friendly forces.
- Actively deploys countermeasures and/or seeks to avoid detection.
- PosID as a bandit or belonging to a hostile force.

Hostile Act considered if unit meets **any** of the conditions below:

(note these conditions may often apply to individuals that are civilian in appearance)

- Observed preparation of an ambush position, including but not limited to the positioning of weapons systems, explosives or significant obstructions in tactically advantageous positions.
- PosID as engaging in the command and control of hostile forces.
- Observed in the use, transportation or maintenance of weapons systems that pose a threat to coalition forces within a contested battlespace.

Upon confirmation of a hostile act, aircrew are cleared to engage and act in self defence or the defence of friendly forces.