

OCN SORTIE # 270813/9**Flight:**

Call Sign	Tail	Freq	TCN	Role	T/O Time	TOT	End Vul
Devil 1-1	300	260	97X	Strike	09:21	10:30	11:30
Devil 1-2	309	260	N/A	Strike	09:22	10:30	11:30
Devil 1-3	305	260	81X	Strike	09:19	10:30	11:30
Devil 1-4	304	260	84X	Strike	09:20	10:30	11:30

Mission Support:

Call Sign	Freq	Role	Notes
Sentinel	236.8	ABCCC	
Sentinel Actual	240.4	Mission Commander	
Shell	331.8	AAR	TACAN 98Y
Arco	308.2	AAR	TACAN 74X
Texaco	354.6	AAR	TACAN 66X
Searchlight	N/A	ISTAR	E8 JSTARS
Destination			
King Hussein AC	291.8		

Loadout:

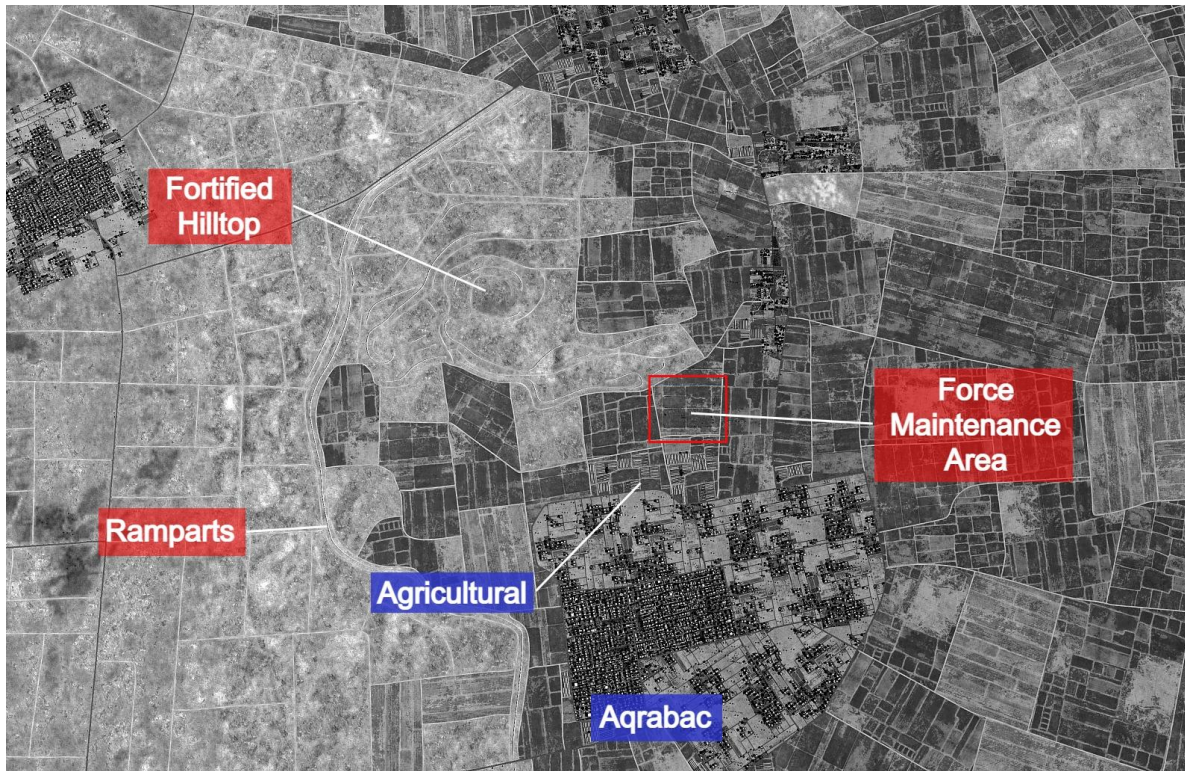
Station 1	AIM-9M	Station 5	MK-20 x 2
Station 2	AGM-65F	Station 6	AIM-120C
Station 3	MK-82 SE x 2	Station 7	MK-82 SE x 2
Station 4	LITENING TGP	Station 8	AGM-65F
Countermeasures	60 Chaff, 60 Flares	Station 9	AIM-9M
Fuel	10,803 lb	Gross Weight	44,220 lb

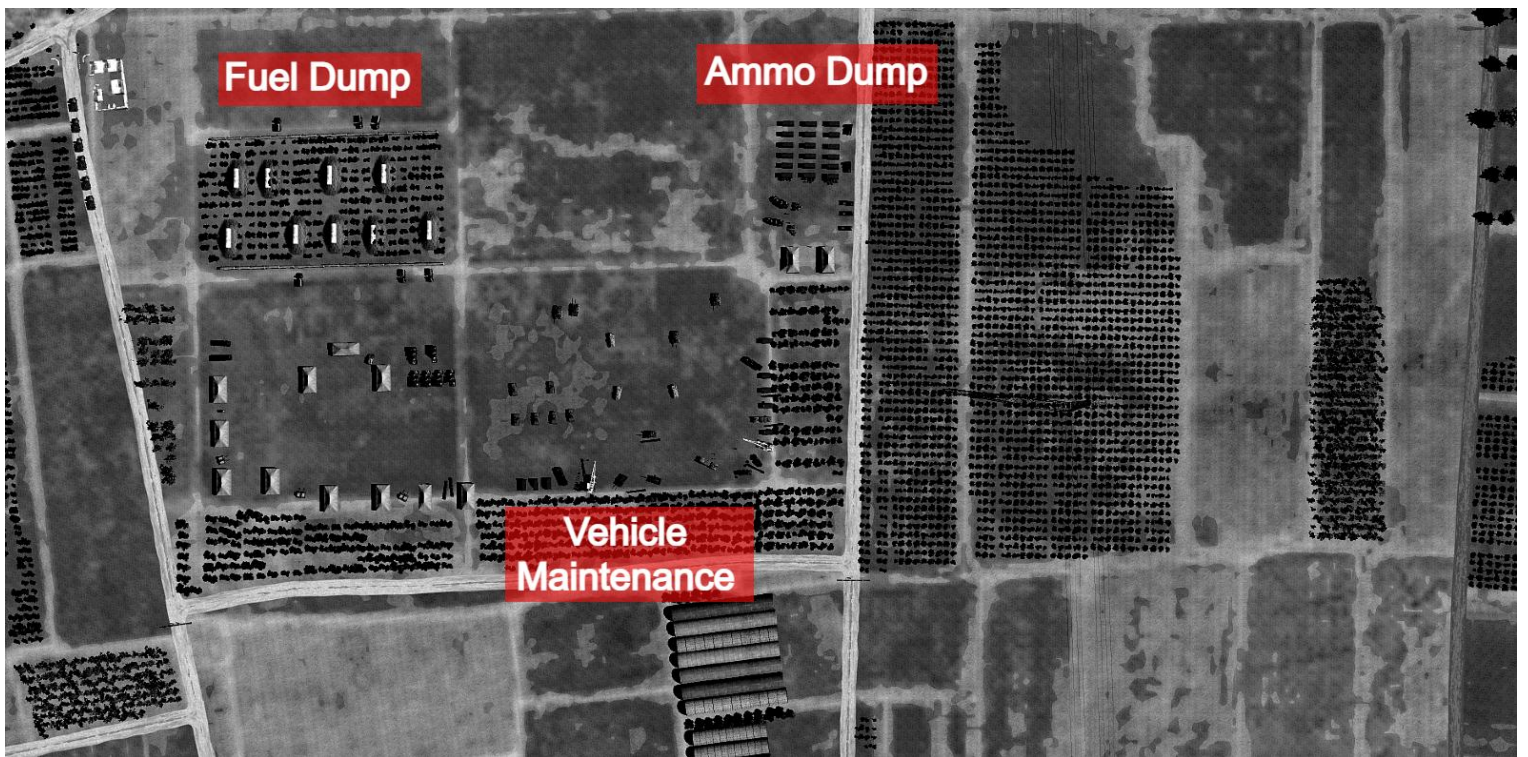
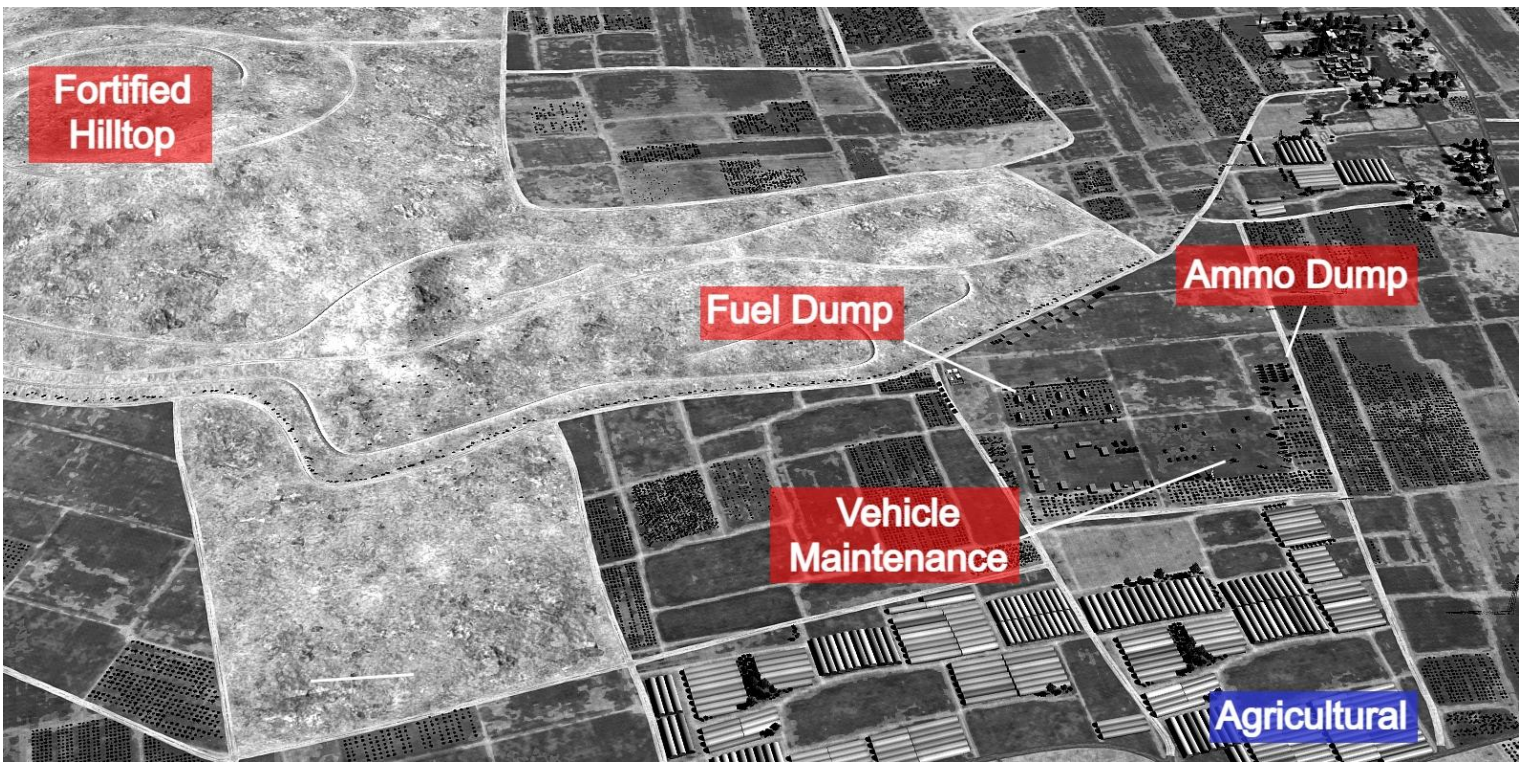
Weather:

Clouds	Wind	Temperature	Precipitation
Overcast 7-15 Kft Scattered 25-26 Kft	077 @ 6 Kn GL 003 @ 12 Kn 6600 ft 234 @ 18 Kn 26000 ft	18°C	None

Primary Objective:

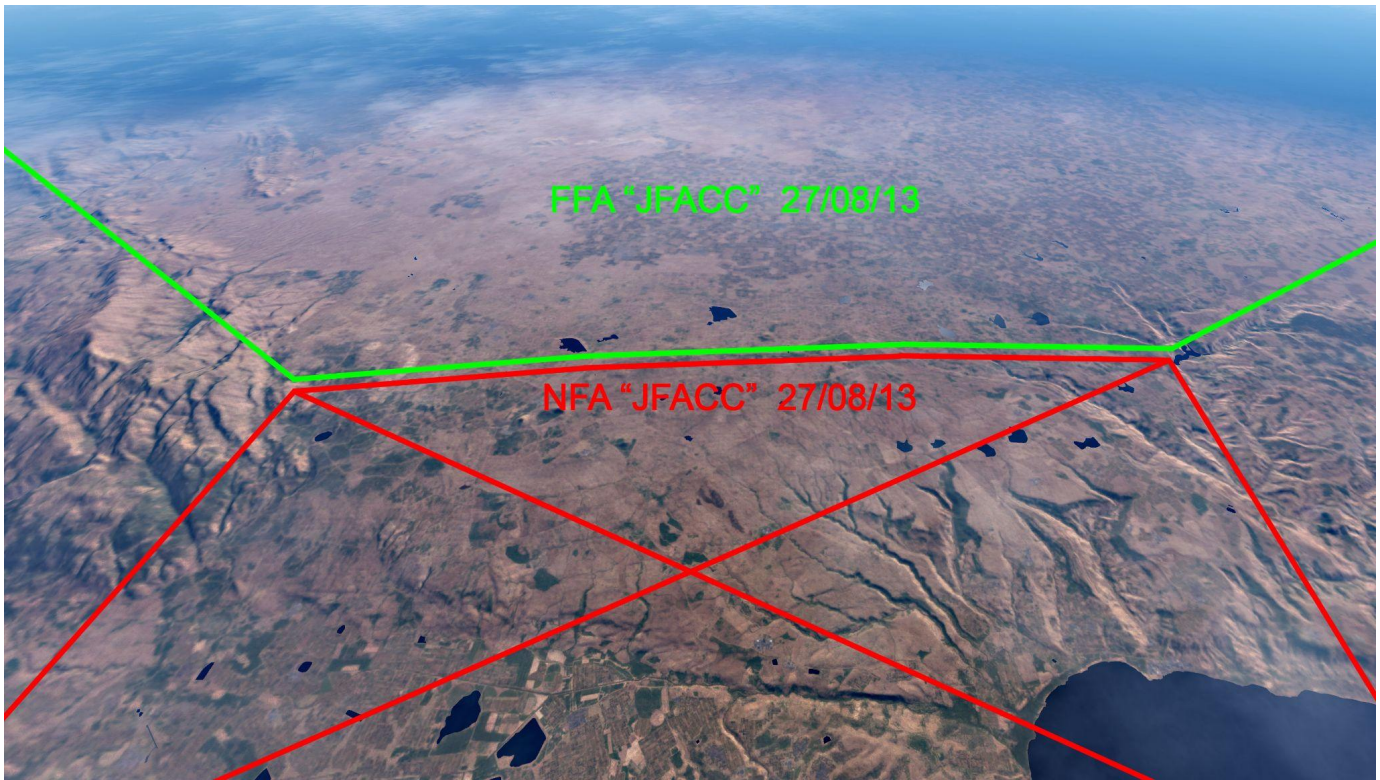
Syrian Force Maintenance Area - fuel and ammo dumps.





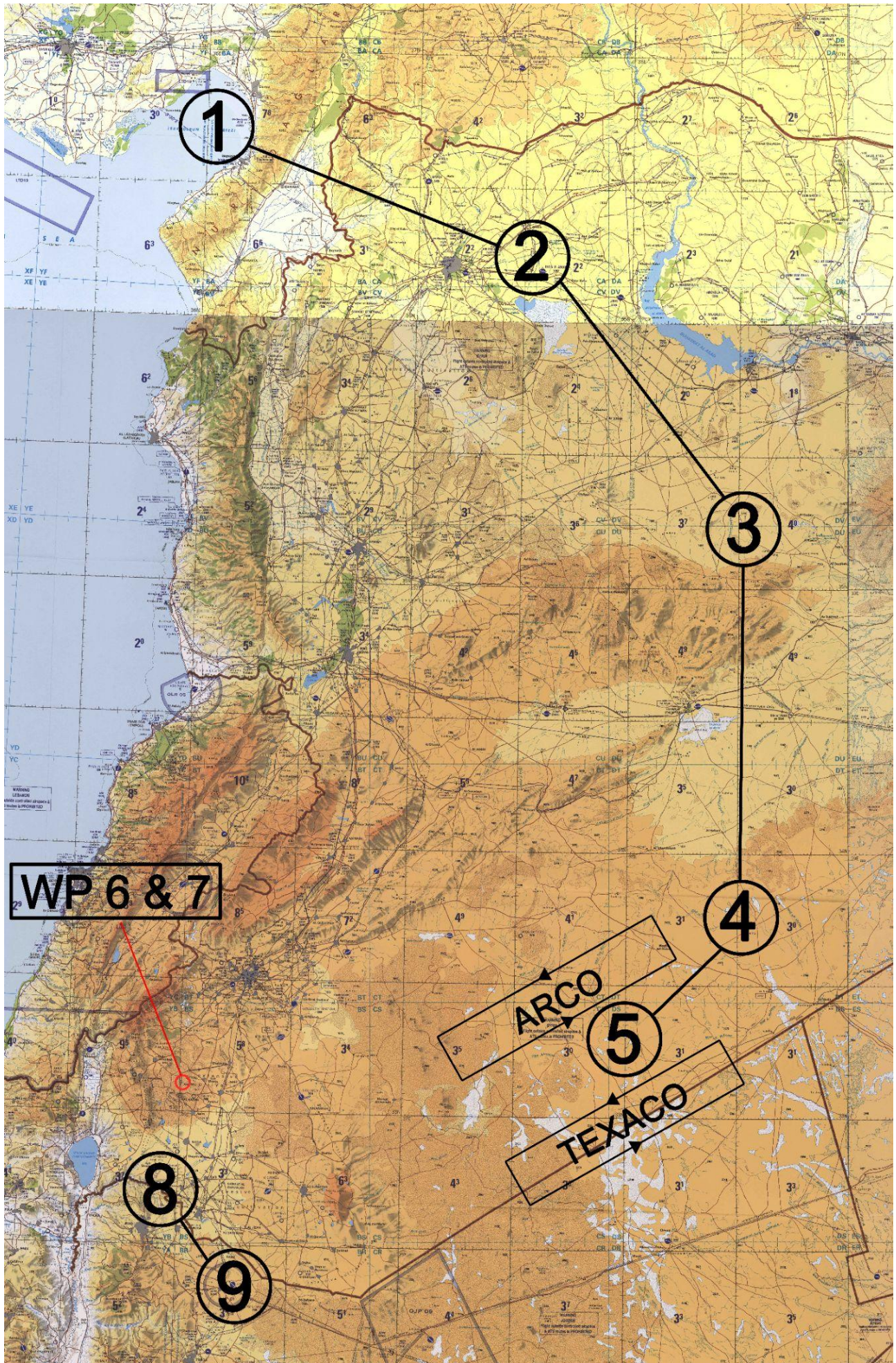
Secondary Objective:

SAA targets of opportunity within FMA and Free Fire Area.



Flight Plan:

WP	Alt Kft	Mach	Notes
1	25	0.75	RV flight
2	25	0.75	Aleppo
3	25	0.75	
4	25	0.75	
5	TBC		ARCO
6			TGT - FMA FUEL
7			TGT - FMA AMMO
8	20	0.75	EGRESS
9			Land King Hussein AC
BULLS N 35°43'59" E 37°06'17"			



Fuel Plan:

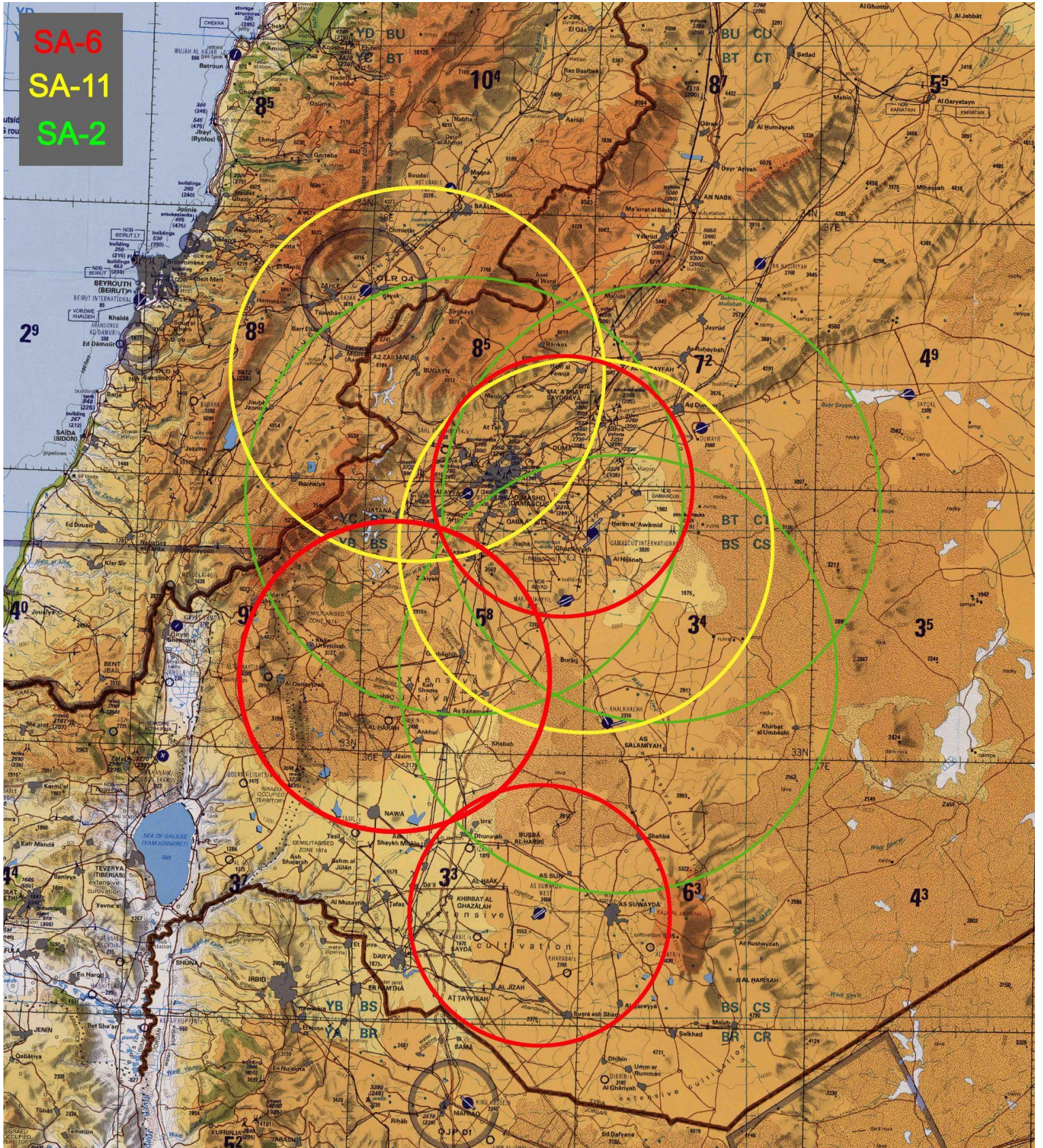
Stage	Notes	Target Fuel lb
Takeoff		10233
Departure	<i>To 25k Ft</i>	9003
WP1	<i>25Kft @ M0.75</i>	8328
WP2	<i>25Kft @ M0.75</i>	7138
WP3	<i>25Kft @ M0.75</i>	5812
WP4	<i>25Kft @ M0.75</i>	4231
WP5	<i>25Kft @ M0.75</i>	3551
AAR	<i>ARCO + ~ 7000 lb</i>	10500
Bingo = 2700 lb		
WP8	<i>20Kft @ M0.75</i>	1957
WP9	<i>Land King Hussein AC</i>	1336

Radio Plan:

Channel	Comm 1	Freq	Comm 2	Freq
1	<i>INK Ground</i>	<i>250.2</i>	<i>INK Ground</i>	<i>128.1</i>
2	<i>Devil 1</i>	<i>260</i>	<i>INK Tower</i>	<i>128.2</i>
3	<i>King Hussein AC</i>	<i>291.8</i>	<i>INK Departure</i>	<i>128.5</i>
4			<i>INK Approach</i>	<i>128.3</i>
5			<i>INK Arrival</i>	<i>128.4</i>
6			<i>INK ATIS</i>	<i>128.95</i>
7			<i>INK Emergency</i>	<i>128.7</i>
8			<i>Sentinel</i>	<i>236.8</i>
9			<i>Sentinel Actual</i>	<i>240.4</i>
10			<i>Texaco</i>	<i>354.6</i>
11			<i>Shell</i>	<i>331.8</i>
12			<i>Arco</i>	<i>308.2</i>

Threats:

SA-6
SA-11
SA-2



Short Range Air Defences

WARNING
LEBANON
outside controlled airspace &
5 routes is PROHIBITED

