

# OPERATION RAPID EAGLE 11/23/11

**Flight:**

Pilot	Call Sign	Side #	Freq	Role	T/O Time	TOT	End Vul
Mike-Mike	Hellcat 1-1	<b>01</b>	<b>260</b>	<b>CAS</b>	<b>06:40</b>	<b>07:00</b>	<b>08:00</b>
Ein-Stein	Hellcat 1-2	<b>10</b>	<b>260</b>	<b>CAS</b>	<b>06:30</b>	<b>07:00</b>	<b>08:00</b>

**Loadout:**

7 6 5 4B 4A 3 2 1

<b>Station 7</b>	GBU-12	<b>Station 4B</b>	GAU-12	<b>Station 3</b>	FUEL
<b>Station 6</b>	AGM-65L	<b>Ammo</b>	HE M-792	<b>Station 2</b>	AGM-65L
<b>Station 5</b>	FUEL	<b>Station 4A</b>	TARGET POD	<b>Station 1</b>	GBU-12

<b>Fuel</b>	11,764 LB
<b>Gross Weight</b>	30,836 LB

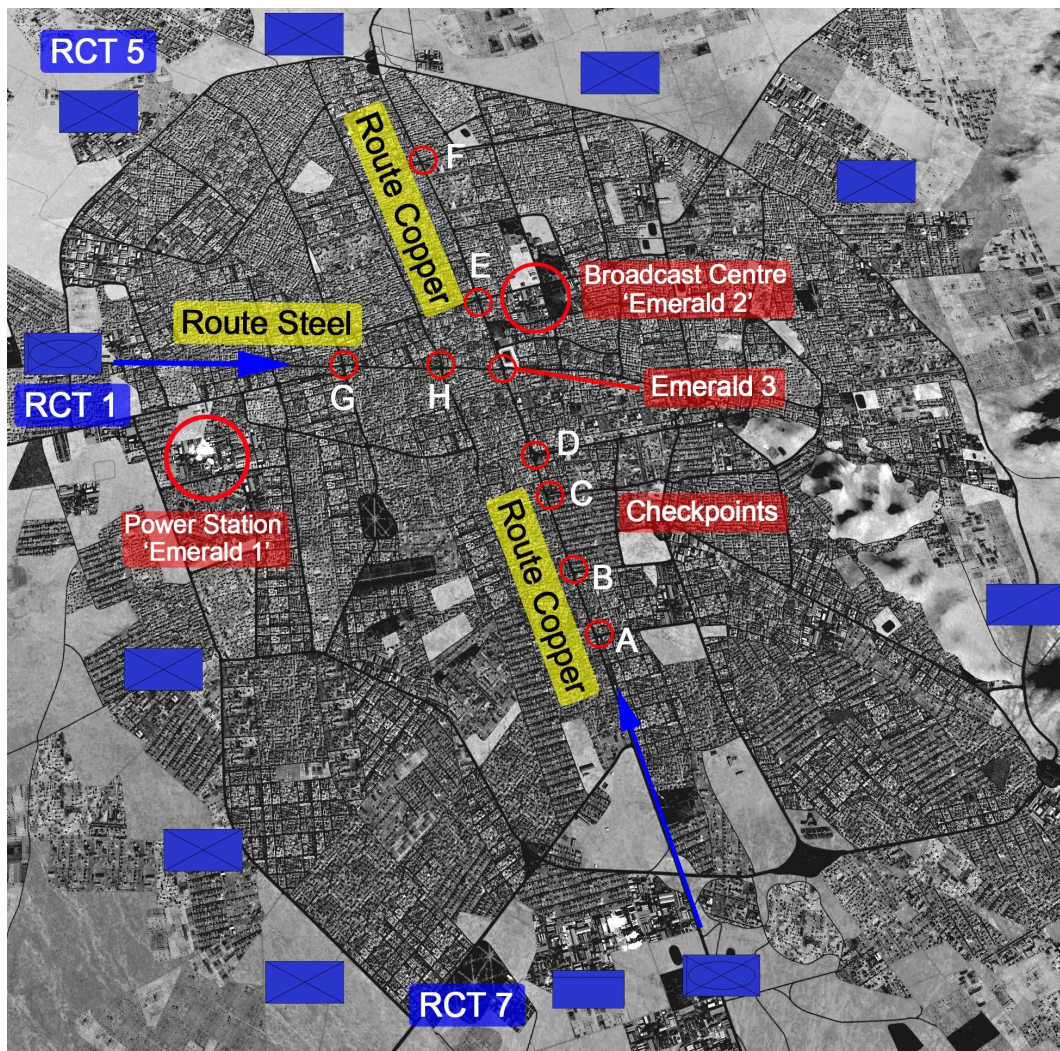
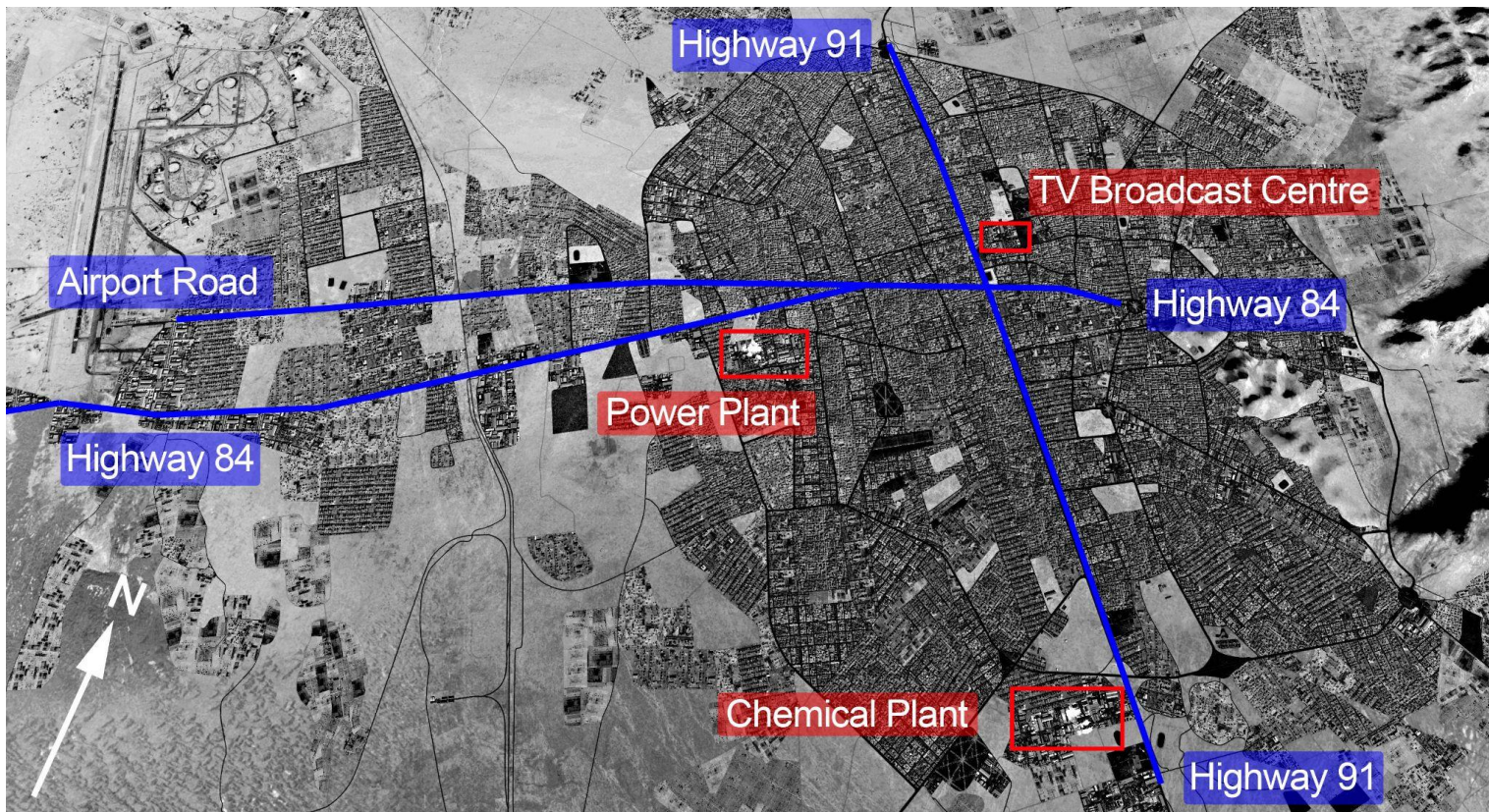
**Countermeasure Bins:**

<b>Top Front Left</b>	30 Flares
<b>Top Front Right</b>	30 Flares
<b>Top Rear Left</b>	30 Flares
<b>Top Rear Right</b>	30 Flares
<b>Bottom Left</b>	30 Flares
<b>Bottom Right</b>	30 Flares

**Weather:**

Clouds	Wind	Temperature	Precipitation
Scattered 9000 ft	147 @ 2Kn GL 250 @ 6Kn 6600 ft 139 @ 12Kn 26000 ft	14°C	None

# OPERATION RAPID EAGLE 11/23/11



**OPERATION RAPID EAGLE 11/23/11**

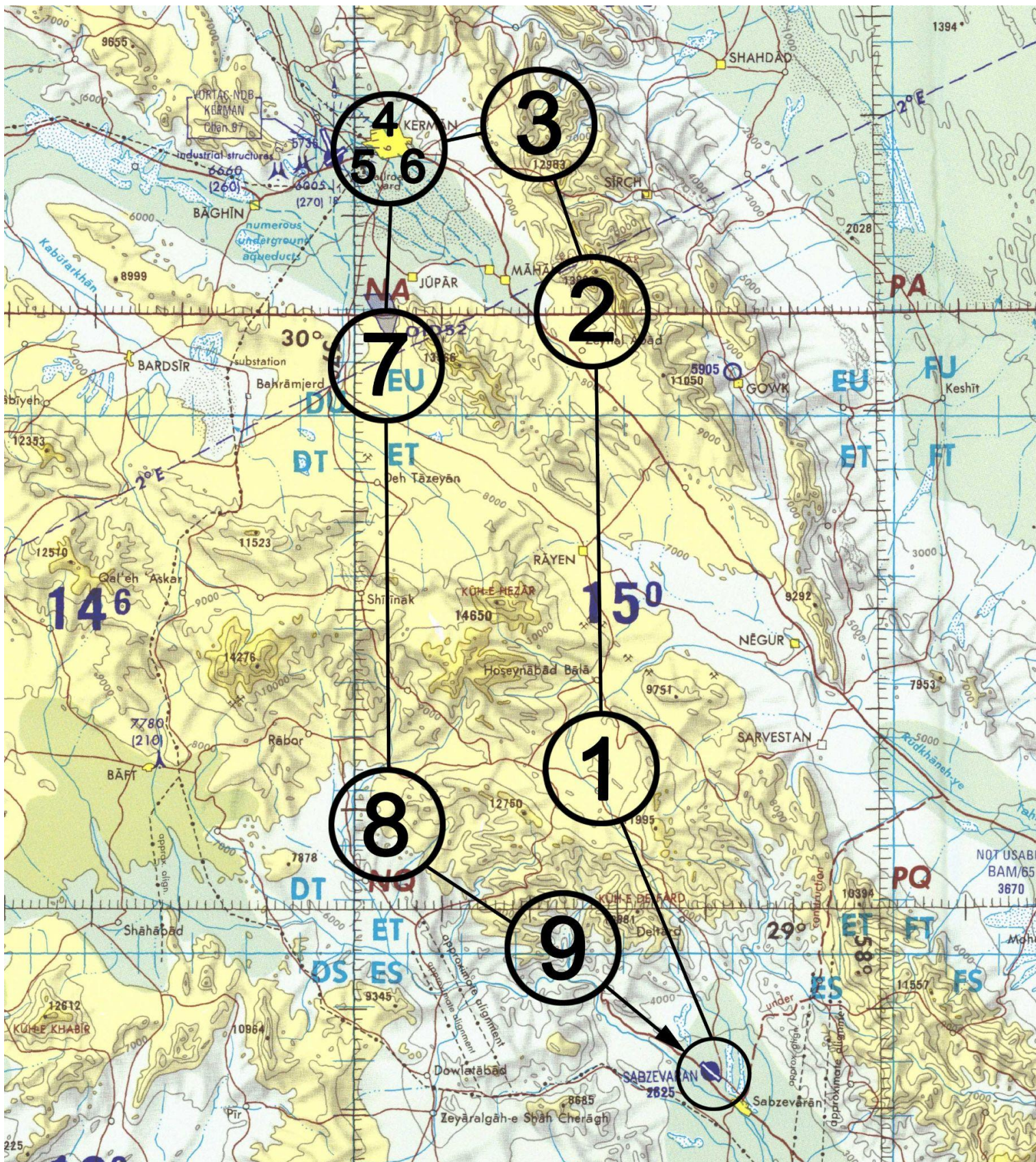
**Flight Plan:**

<b>Waypoint</b>	<b>Alt (Ft MSL)</b>	<b>Mach</b>	<b>Notes</b>
<b>1</b>	<b>20</b>	<b>0.65</b>	
<b>2</b>	<b>20</b>	<b>0.65</b>	
<b>3</b>	<b>20</b>	<b>0.65</b>	<b>Holding Stack</b>
<b>4</b>			<b>Chemical Plant</b>
<b>5</b>			<b>Power Station</b>
<b>6</b>			<b>Emerald 3</b>
<b>7</b>	<b>20</b>	<b>0.65</b>	
<b>8</b>	<b>20</b>	<b>0.65</b>	
<b>9</b>	<b>20</b>	<b>0.65</b>	<b>Reservoir</b>
<b>10</b>			<b>Land FOB Juliet</b>
			<b>BULLS N29°30'55", E57°16 '24"</b>

**Fuel Plan:**

<b>Stage</b>	<b>Notes</b>	<b>Target Fuel lb</b>
STARTING FUEL		<b>11700</b>
WP1	<i>20Kft @ M0.65</i>	<b>9968</b>
WP2	<i>20Kft @ M0.65</i>	<b>9332</b>
WP3		<b>9116</b>
<b>Bingo</b>		<b>2876</b>
WP7	<i>20Kft @ M0.65</i>	<b>2676</b>
WP8	<i>20Kft @ M0.65</i>	<b>2256</b>
WP9	<i>APPROACH</i>	<b>1866</b>

# OPERATION RAPID EAGLE 11/23/11



**OPERATION RAPID EAGLE 11/23/11****Radio Plan:**

<b>Channel</b>	<b>Comm 1</b>	<b>Freq</b>	<b>Comm 2</b>	<b>Freq</b>
1	<i>Juliet Ground</i>	<i>141.0</i>	<i>Juliet Ground</i>	<i>141.0</i>
2	<i>Juliet Tower</i>	<i>141.5</i>	<i>Hellcat</i>	<i>260.0</i>
3	<i>Juliet Departure</i>	<i>142.25</i>	<i>Reaper 2</i>	<i>305.4</i>
4	<i>Juliet Arrival</i>	<i>142.6</i>	<i>Wolf 1</i>	<i>267.0</i>
5	<i>Juliet Emergency</i>	<i>143.1</i>	<i>Sandman 1-1</i>	<i>301.2</i>
6	<i>Chieftain</i>	<i>291.5</i>	<i>Sandman 1-2</i>	<i>306.8</i>
7	<i>Steel Rain</i>	<i>181.6</i>	<i>Sandman 1-3</i>	<i>307.2</i>
8	<i>Iceman</i>	<i>185.7</i>	<i>Sandman 5-1</i>	<i>311.6</i>
9	<i>Fixer</i>	<i>189.0</i>	<i>Sandman 5-2</i>	<i>314.4</i>
10	<i>Madman</i>	<i>193.2</i>	<i>Sandman 5-3</i>	<i>317.0</i>
11	<i>Cyclops</i>	<i>281.6</i>	<i>Sandman 7-1</i>	<i>318.3</i>
12	<i>SPARE</i>	<i>--</i>	<i>Sandman 7-2</i>	<i>321.2</i>
13	<i>SPARE</i>	<i>--</i>	<i>Sandman 7-3</i>	<i>341.6</i>
14	<i>SPARE</i>	<i>--</i>	<i>Sandman 7-4</i>	<i>344.1</i>
15	<i>SPARE</i>	<i>--</i>	<i>Sandman 7-5</i>	<i>351.8</i>
16	<i>SPARE</i>	<i>--</i>	<i>Black</i>	<i>329.8</i>
17	<i>SPARE</i>	<i>--</i>	<i>White</i>	<i>266.8</i>
18	<i>SPARE</i>	<i>--</i>	<i>Red</i>	<i>312.0</i>
19	<i>SPARE</i>	<i>--</i>	<i>Orange</i>	<i>355.2</i>
20	<i>SPARE</i>	<i>--</i>	<i>Yellow</i>	<i>231.4</i>
21	<i>SPARE</i>	<i>--</i>	<i>Green</i>	<i>388.7</i>
22	<i>SPARE</i>	<i>--</i>	<i>Blue</i>	<i>251.5</i>
23	<i>SPARE</i>	<i>--</i>	<i>Indigo</i>	<i>363.4</i>
24	<i>SPARE</i>	<i>--</i>	<i>Violet</i>	<i>200.6</i>
25	<i>SPARE</i>	<i>--</i>	<i>Magenta</i>	<i>391.1</i>
26	<i>SPARE</i>	<i>--</i>	<i>Grey</i>	<i>241.3</i>

**Threats:**

<b>SA-18 'GROUSE'</b>	
<b>Guidance Type</b>	<b>Infra-Red</b>
<b>Acquisition Range</b>	<b>Visual</b>
<b>Max Engagement Range</b>	<b>3 nm</b>
<b>Max Ceiling</b>	<b>12,000 Ft MSL</b>
<b>Missile Mach</b>	<b>1.9</b>
<b>Warhead Type</b>	<b>2.6lb Frag HE</b>
<b>Fuzing</b>	<b>Contact / Grazing</b>
<b>Notable Features</b>	<b>Man Portable Air Defence (MANPAD), highly mobile and easy to hide. May operate in teams of shooter/spotter, communicating over distance to ambush targets.</b>

<b>ZU-23 AAA</b>	
<b>Guidance Type</b>	<b>None</b>
<b>Acquisition Range</b>	<b>Visual</b>
<b>Max Engagement Range</b>	<b>1.5 nm</b>
<b>Max Ceiling</b>	<b>7,000 Ft MSL</b>
<b>Notable Features</b>	<b>Twin 23mm autocannon.  Towed system, easy to relocate. Cheap and widely proliferated. Can be truck mounted for a highly mobile, low cost air defence platform. Fires HE rounds that explode on contact or at set altitude.</b>

<b>S-60 AAA</b>	
<b>Guidance Type</b>	<b>None</b>
<b>Acquisition Range</b>	<b>Visual</b>
<b>Max Engagement Range</b>	<b>3 nm</b>
<b>Max Ceiling</b>	<b>20,000 Ft MSL</b>
<b>Notable Features</b>	<b>Single 57mm autocannon. Capable of firing over 70 rounds per minute.  Towed system, easy to relocate. Cheap and widely proliferated.  Fires HE rounds that explode on contact or at set altitude.</b>