

Date: 08/28/13

Callsign: Sword 2-1

ATO Syria

Mission# 8982	Step	Startup 11:20Z	Takeoff 11:30Z
TGT Area Bekaa Valley	Weather 27°C Broken ~ 8,000ft Winds 230 6 Kn @ GL Winds 160 17 Kn @ 6600 Winds 280 26 Kn @ 26000		
TOT 11:50Z			

A/C#	Pilot	TACAN	Spot
942	Forrest - Sword 2-1		
851	Boomer - Sword 2-2	37X	
899	Shade - Sword 3-1	31X	
966	Bug - Sword 3-2	27X	

Loadout

9	8	7	6	5R	5	5L	4	3	2	1
120C	9X	2* GBU 12	Fuel	TGP	ALQ 184L	HTS	Fuel	2* GBU 38	9X	120C

Chaff / Flare 60 Chaff / 60 Flares

Gun SAPHEI

Fuel 12,113 lb

Gross Weight 39,712 lb

Date: **08/28/13**Callsign: **Sword 2-1**

ATO Syria

Function	Callsign	Freq	
ABCCC	Sentinel	236.800	
Rivet Joint	Vacuum	293.400	
AWACS West	Darkstar	287.600	
AWACS East	Magic	283.150	
AAR West	Arco	308.200	74 X
AAR North	Texaco	354.600	66 X
AAR East	Shell	331.800	89 Y

AKROTIRI ATC	COMM 1 UHF		COMM 2 VHF
Ground 122.100	Darkstar	1	Akr Ground
Tower 130.100	Magic	2	Akr Tower
Dep'ture 124.200	Arco	3	Akr Departure
Appr'ch 123.600	Shell	4	Akr Approach
Emerg'cy 133.300	Texaco	5	Akr Emergency
ATIS 125.000	Sentinel	6	Akr ATIS
TACAN 107X	Vacuum	7	Sword 2
Sword 2	Copper 3-2	8	Sword 3
VHF 141.6	Orange 1	9	Salti Tower
Sword 3	Orange 2	10	Red 1
VHF 140.0	Gold 1	11	Red 2
Salti Tower	Gold 2	12	White 1
VHF 148.2	Green 1	13	White 2
Copper 3-2	Green 2	14	Blue 1
UHF 240.5	Yellow 1	15	Blue 2
	Yellow 2	16	Black 1
	Purple 1	17	Black 2
	Purple 2	18	Black 3
	Indigo 1	19	Green 1
	Indigo 2	20	Green 2

Date: 08/28/13

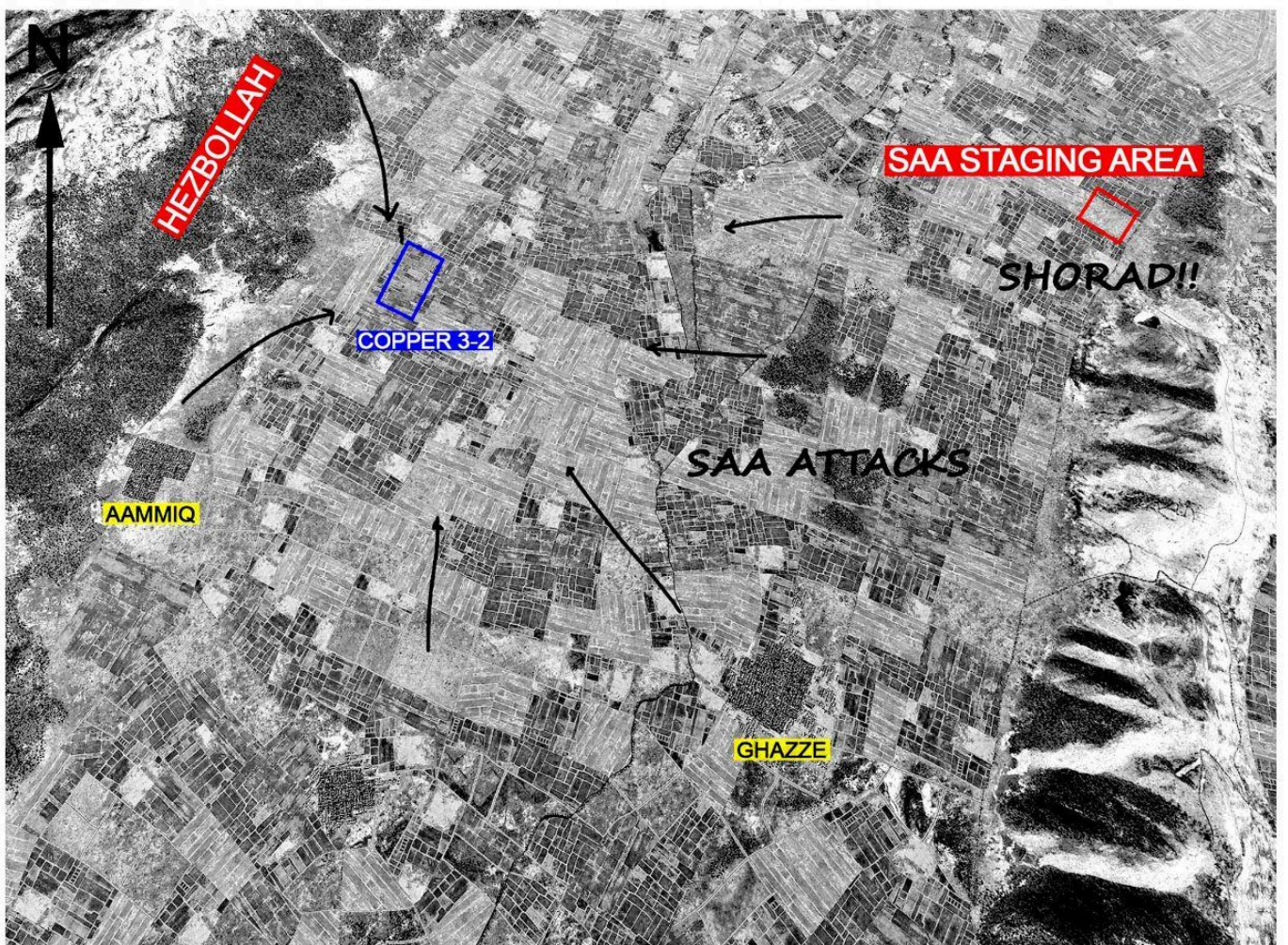
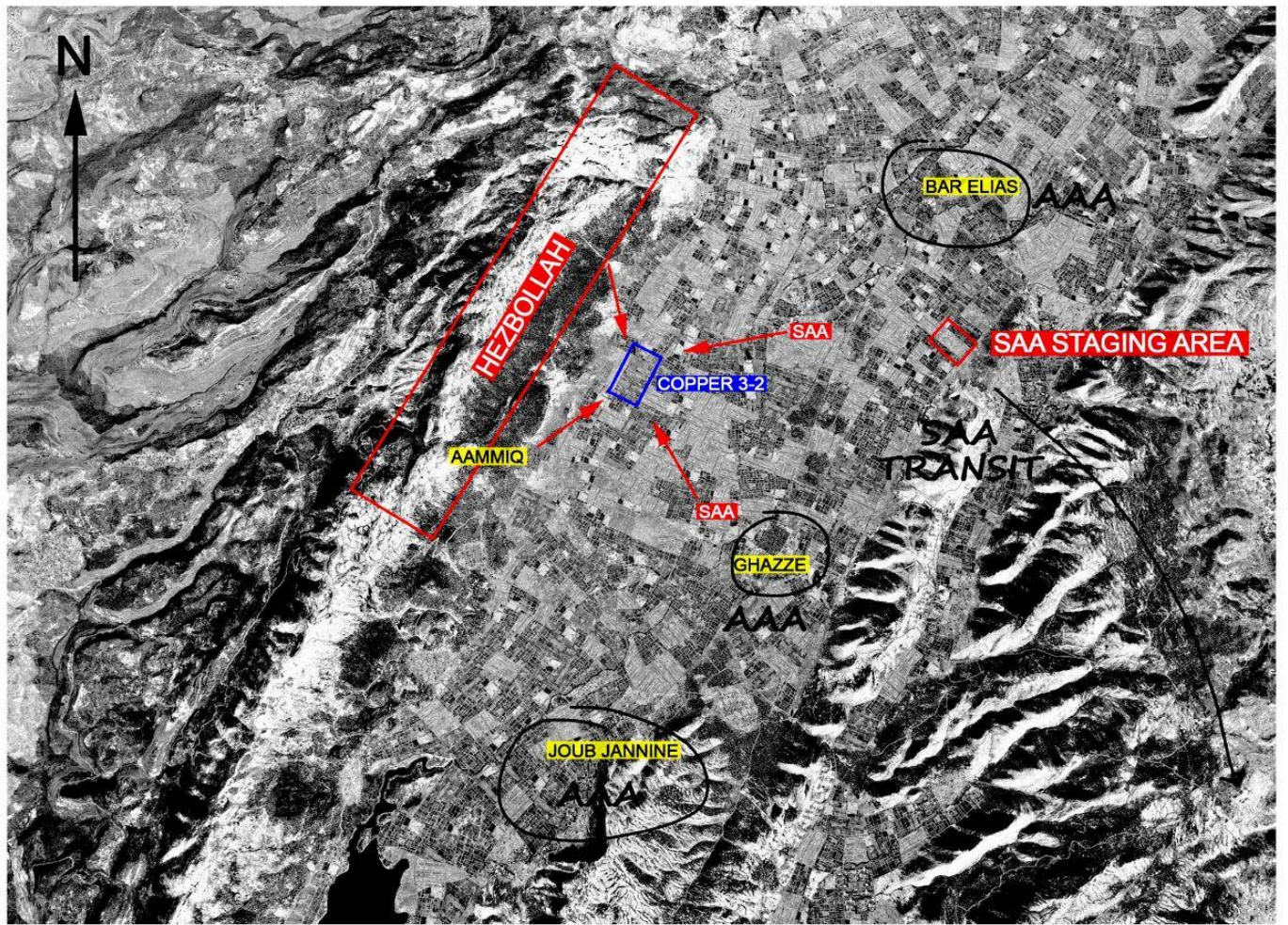
Callsign: Sword 2-1

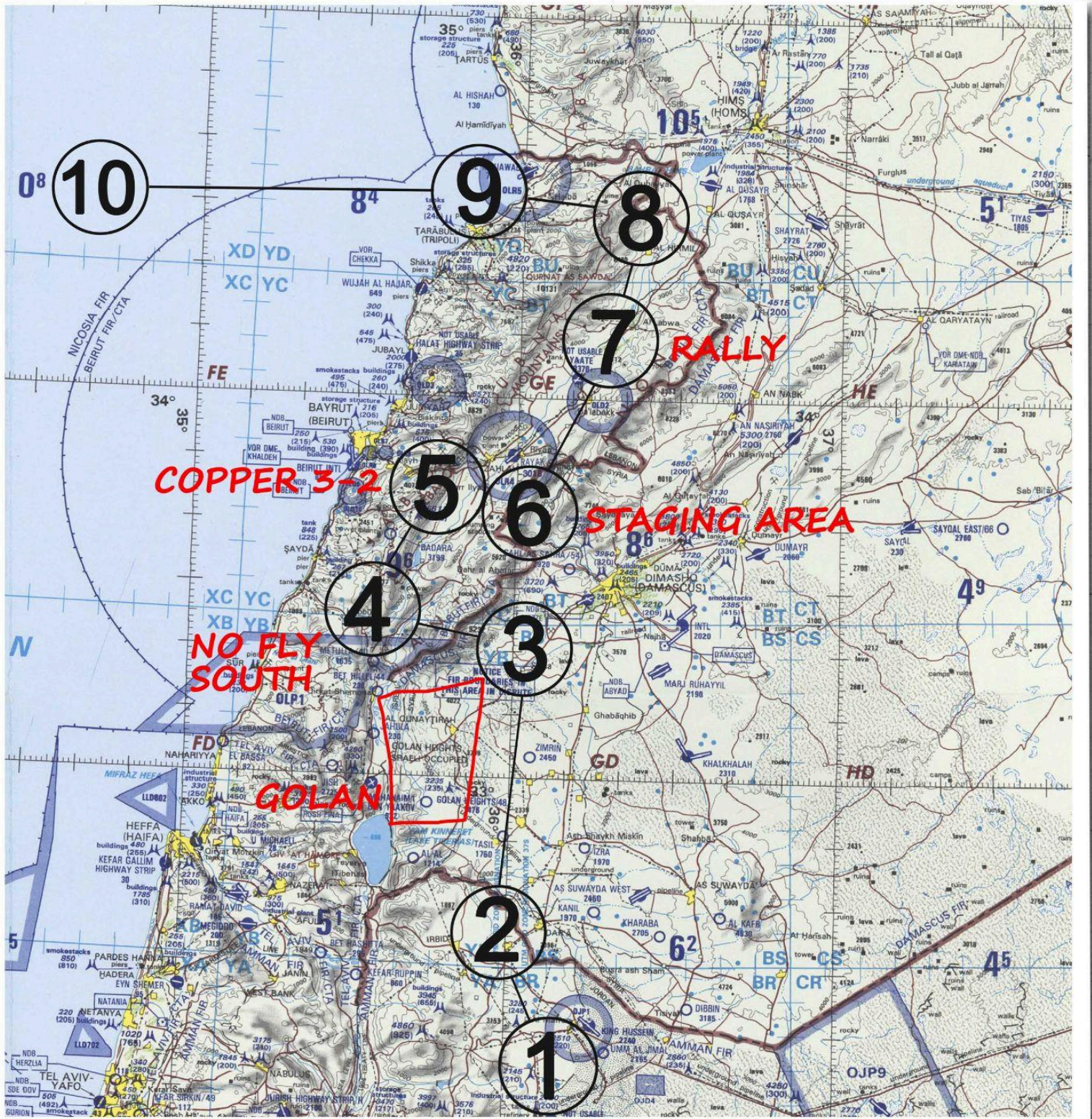
ATO Syria

Flight Plan	WP	Fuel Plan
20K, MO.7	1	10,494 lb
SYRIAN BORDER 25K, MO.7	2	10,158 lb
25K, MO.7	3	9,430 lb
IP	4	9,192 lb
COPPER 3-2	5	
SAA STAGING AREA	6	
RALLY	7	2,672 lb
SILVER	8	2,402 lb
SILVER	9	2,132 lb
25K, MO.7	10	1,482 lb
IREFA	11	
ANANE	12	
MEZUS	13	

Bullseye: DIAP

Bingo 3,100 lb





THREATS & CODES:

SA-6: MEZ = 15nm, Max alt = 40,000 ft HAD Class 2

SA-8: MEZ = 6nm, Max alt = 16,000 ft / 39,000 ft HAD Class 2

SA-11: MEZ = 20nm, Max alt = 72,000 ft HAD Class 1

SA-15: MEZ = 8nm, Max alt = 25,000 ft HAD Class 1

MANPAD/SA-9: MEZ = 3nm, Max alt = 12,000 ft HAD Class 1