

Date: 27/06/13

Callsign: Sword 2-1

ATO Syria

Mission# 0529	Step 01:45Z	Startup 02:35Z	Takeoff 02:45Z
---------------	-------------	----------------	----------------

TGT Area
Deir ez-Zor
TOT
03:15 ZULU

Weather 22°C
Broken Clouds ~ 11000-14000 + 23000 ft
Winds 253 7 Kn @ GL
Winds 295 16 Kn @ 6600
Winds 204 35 Kn @ 26000

A/C#	Pilot	Spot
879	Popeye - Sword 1-1	8
918	Ghost - Sword 1-2	10
942	Forrest - Sword 2-1	9
917	Rotor - Sword 2-2	11

Loadout								Gun - SAPHEI			
9	8	7	6	5R	5	5L	4	3	2	1	
120C	9M	2* AGM 65D	Fuel	TGP	184L	HTS	Fuel	2* GBU 38	9M	120C	

Fuel 12,113 lb

Gross Weight 39,818 lb

90 Chaff
30 Flares

Package TOT 06:30 local / 03:30 ZULU

Date: 27/06/13

Callsign: **Sword 2-1**

ATO Syria

Function	Callsign	Freq	
ABCCC	Sentinel	236.800	
Rivet Joint	Vacuum	293.400	
AWACS West	Darkstar	287.625	
AWACS East	Magic	283.150	
AAR West	Arco	308.200	74 X
AAR North	Texaco	354.600	66 X
AAR East	Shell	331.800	89 Y

H4 Airbase		COMM 1 UHF		COMM 2 VHF
Ground	116.350	Gamesmaster	1	H4 Ground
Tower	117.500	Sentinel	2	H4 Tower
Depart	117.250	Vacuum	3	H4 Departure
Approach	118.100	Darkstar	4	H4 Approach
Arrival	118.600	Magic	5	H4 Arrival
Emrg'cy	126.700	Arco	6	H4 Emergency
TACAN	125 X	Shell	7	Sword
		Texaco	8	Green 1
		Warden	9	Green 2
Sword 140.6		Outlaw 3	10	Red 1
		Hammer	11	Red 2
Warden 318.0		Sandy	12	Red 3
		Gold 1	13	Cobalt 1
Hammer 341.5		Gold 2	14	Cobalt 2
		Gold 3	15	Yellow 1
Outlaw 3 336.0		Silver 1	16	Yellow 2
		Silver 2	17	Indigo 1
		Orange 1	18	Indigo 2
		Orange 2	19	Magenta 1
		NOT IN USE	20	Magenta 2

Date: 27/06/13

Callsign: Sword 2-1

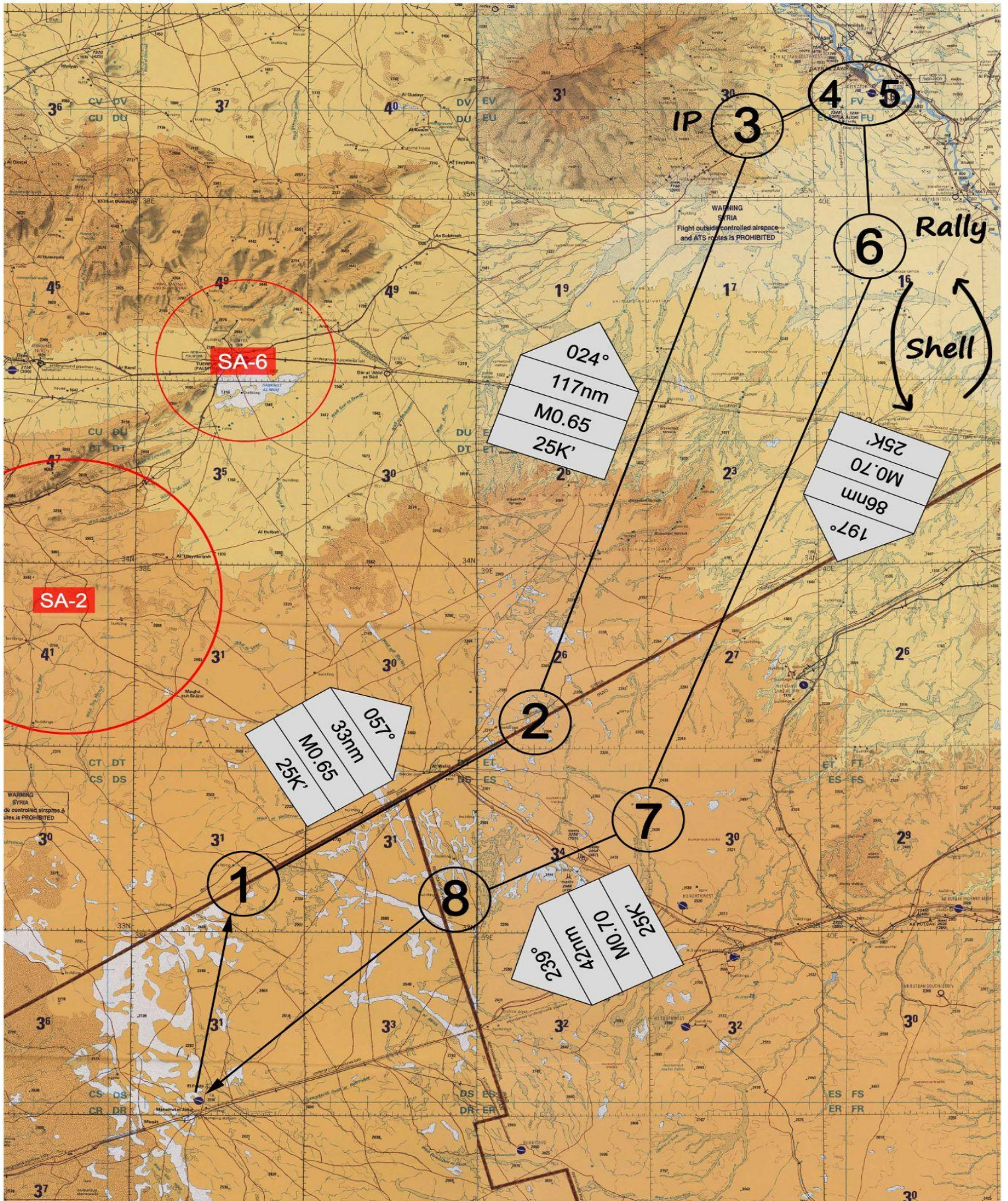
ATO Syria

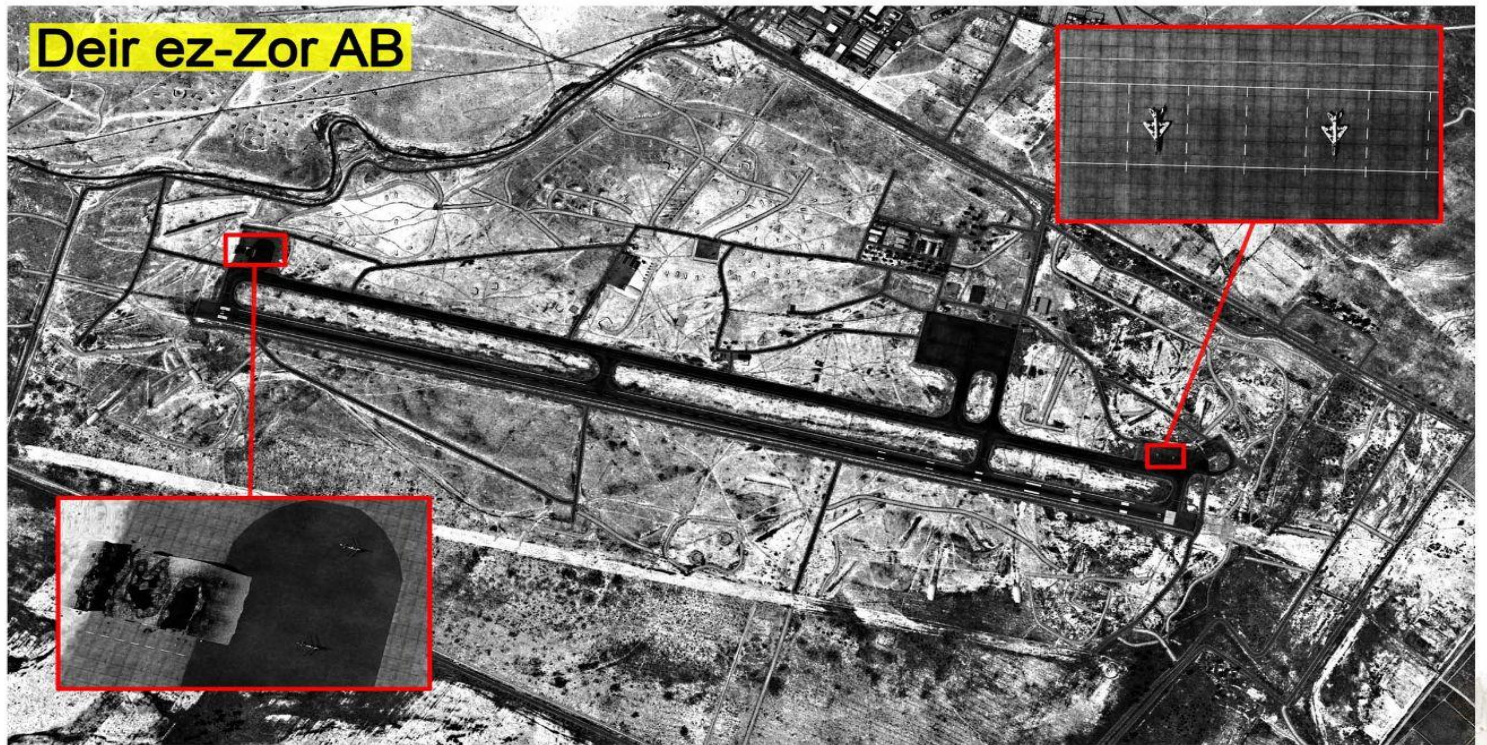
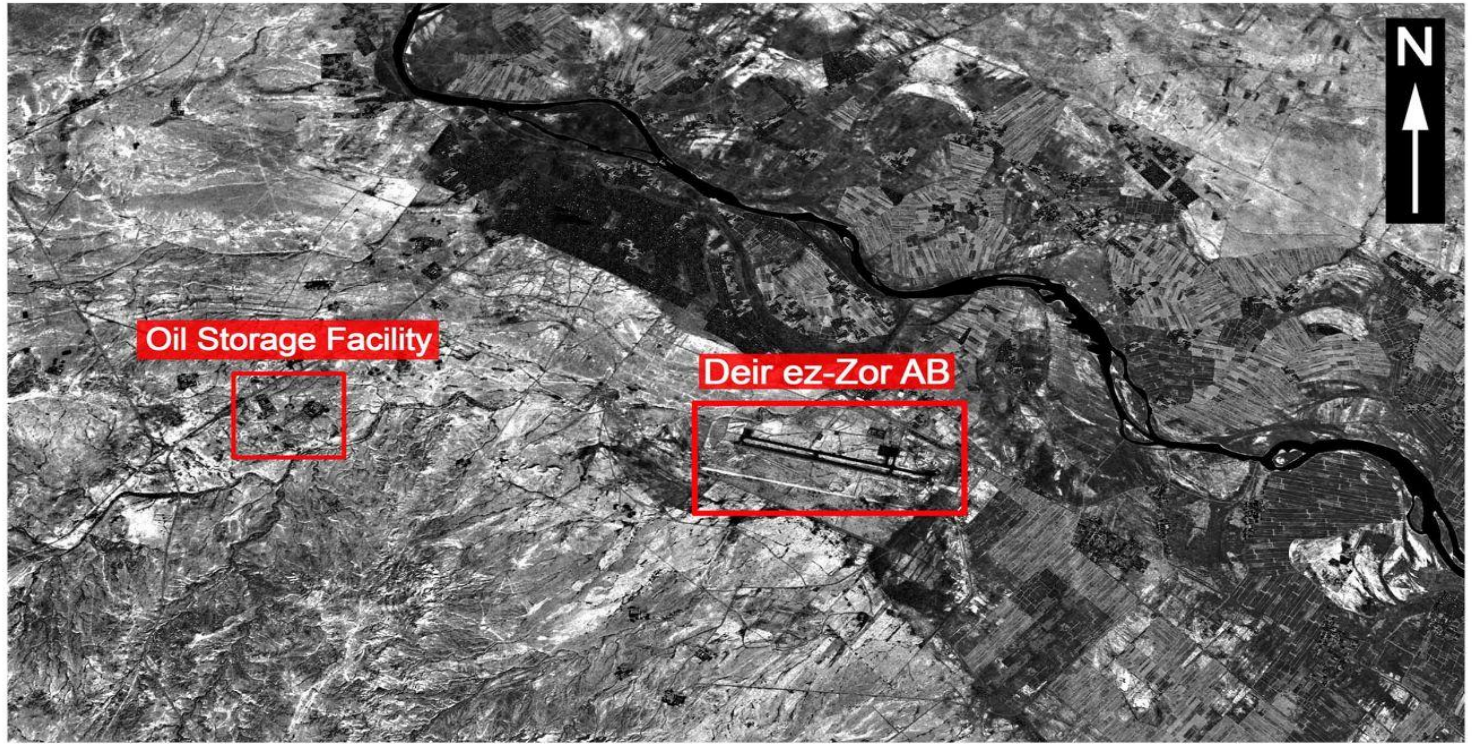
Flight Plan	WP	Fuel Plan
Syrian Border - 20K'	1	10200 lb
Turn North - MO.65, 25K'	2	9038 lb
IP - MO.65, 25K'	3	8038 lb
Oil Storage	4	
Deir ez-Zor	5	
Rally - MO.7, 25K'	6	3105 lb
Egress - MO.7, 25K'	7	2550 lb
Jordan - MO.7, 25K'	8	1941 lb
H4	11	

Bullseye: Portal N35°43.994' E 037°06.282' Bingo 3500 lb

Approach Alpha - WP10

Approach Bravo - WP9





Hammer 1 & 2

Outlaw 3



THREATS:

SA-8: MEZ = 6nm, Max alt = 16,000 ft / 39,000 ft
(depends on missile version)

SA-8 tracking issues at very low altitude

SA-6: MEZ = 15nm, Max alt = 40,000 ft

ZU-57 / S-60: Engagement range = 3nm

Max Alt = 20k ft

ZU-23: Engagement range = 2.5nm, Max Alt = 7,000 ft

MANPAD / IR Missile: Engagement range = 3nm

Max Alt = 12k ft

CODES:

SA-2 = HAD Class 2

SA-6 = HAD Class 2

SA-3 = HAD Class 2

SA-8 = HAD Class 2