

OCN SORTIE # 300613/7**Flight:**

Call Sign	Tail	Freq	TCN	Role	T/O Time	TOT	End Vul
Devil 1-1	301	260	18X	DEAD	07:22	07:45	07:50
Devil 1-2	309	260	N/A	DEAD	07:25	07:45	07:50
Devil 1-3	303	260	N/A	DEAD	07:21	07:45	07:50
Devil 1-4	304	260	N/A	DEAD	07:20	07:45	07:50

Mission Support:

Call Sign	Freq	Role	Notes
Sentinel	236.8	ABCCC	
Sentinel Actual	240.4	Mission Commander	
Shell	331.8	AAR	TACAN 98Y
Arco	308.2	AAR	TACAN 74X
Texaco	354.6	AAR	TACAN 66X
Cobra 2-6	312.8	SEAD	
Spartan 3-1	325.2	EW	

Loadout:

Station 1	AIM-9M	Station 5	2 x MK-20
Station 2	GBU-32	Station 6	AIM-120C
Station 3	FPU-8A Fuel Tank	Station 7	FPU-8A Fuel Tank
Station 4	AIM-120C	Station 8	GBU-32
Countermeasures	40 Chaff, 40 Flares	Station 9	AIM-9M
Fuel	15,291 lb	Gross Weight	46,154 lb

Weather:

Clouds	Wind	Temperature	Precipitation
Broken 8,000 ft	122 @ 5kn GL 178 @ 10Kn 6600ft 247 @ 25Kn 26000 ft	19°C	None

Primary Objective:



SA-11 Command Track, N 34°36'59.42" E 37°00'13.42" 2197 feet

SA-11 TELAR, West, N 34°37'01.63" E 37°00'09.72" 2215 feet

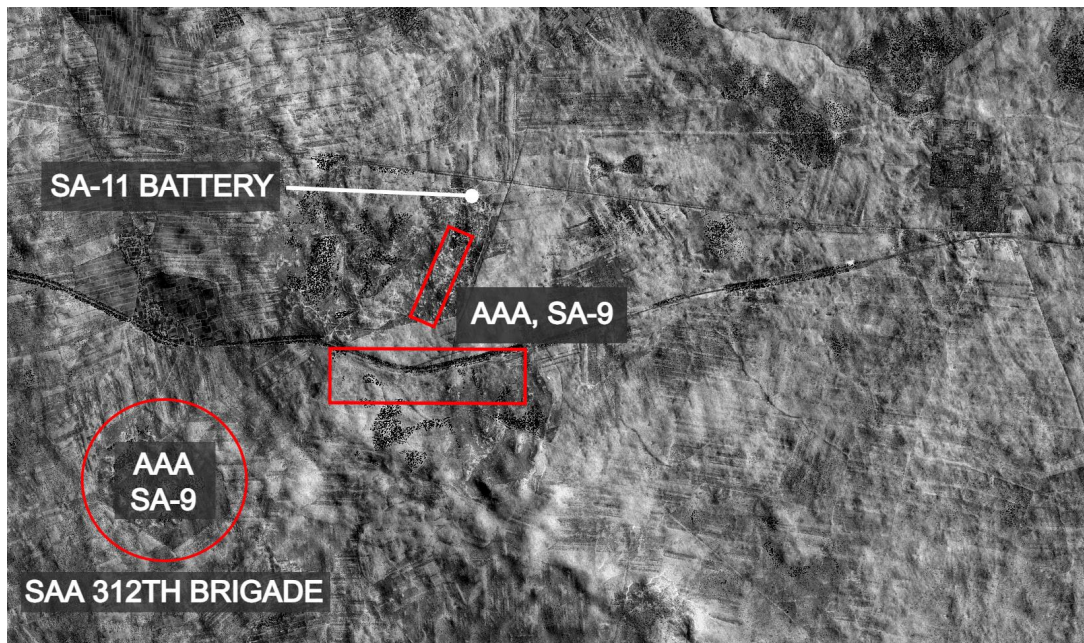
SA-11 TELAR, Central, N 34°37'01.21" E 37°00'17.52" 2189 feet

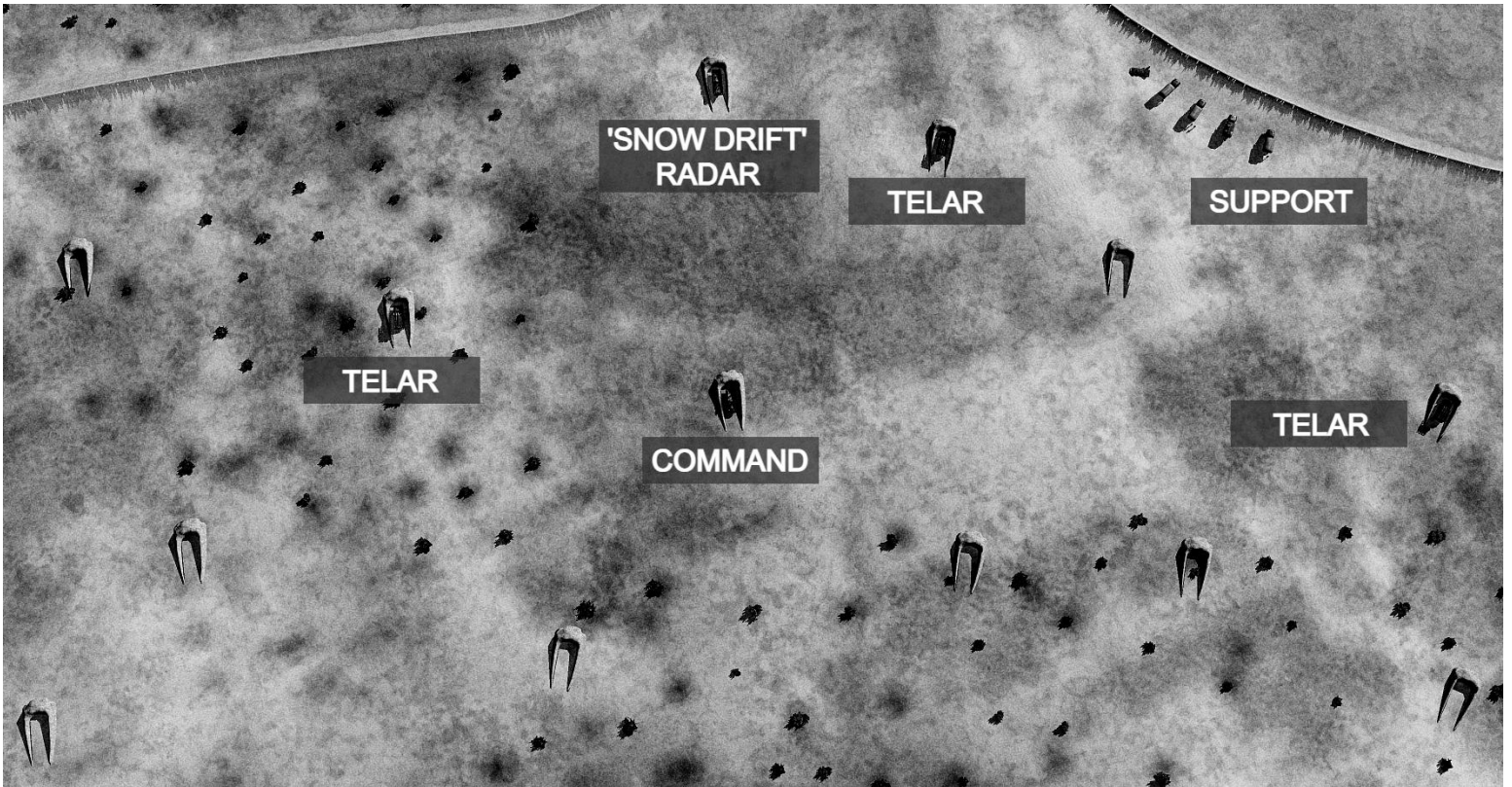
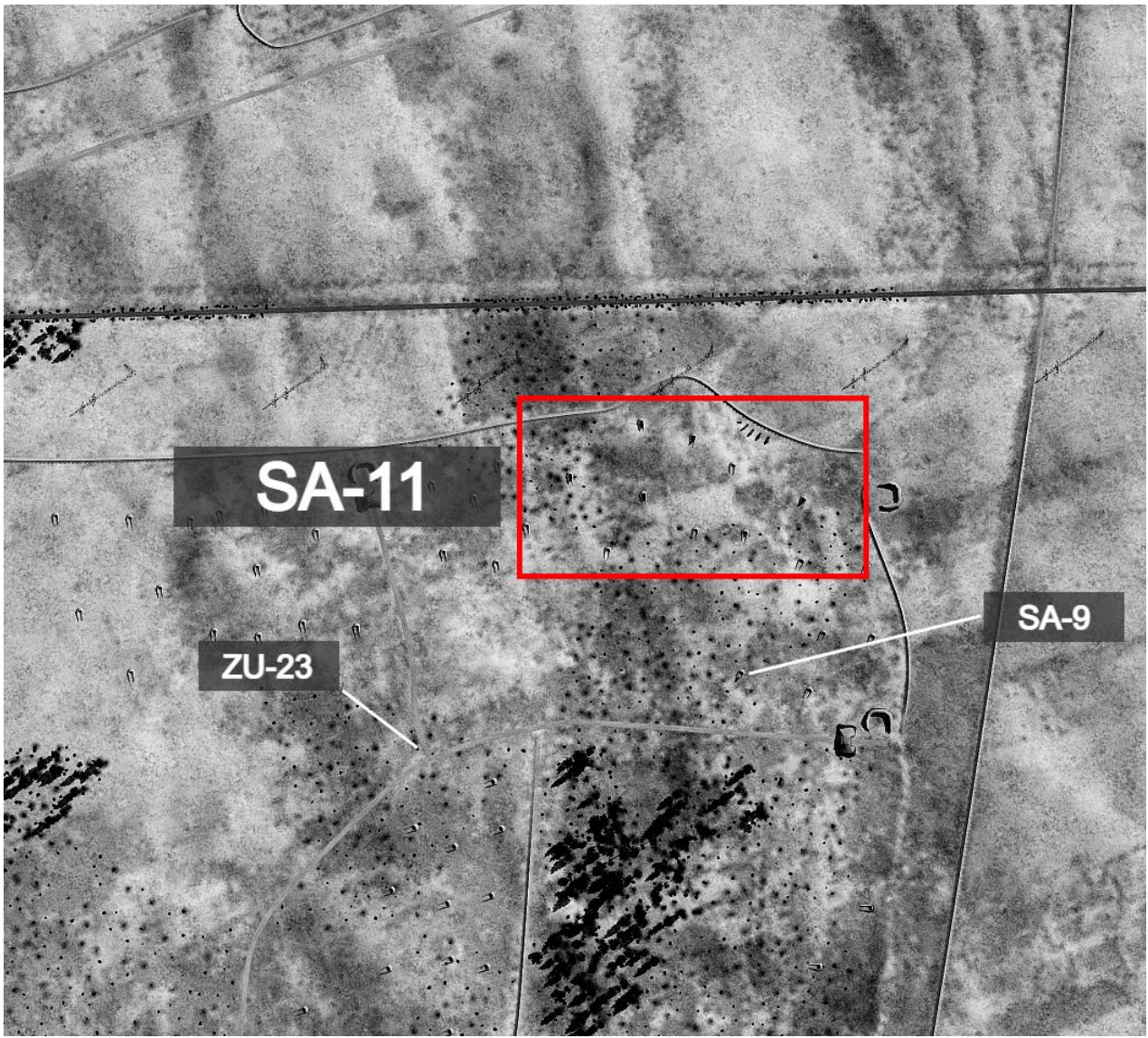
SA-11 TELAR, East, N 34°36'56.22" E 37°00'22.21" 2192 feet

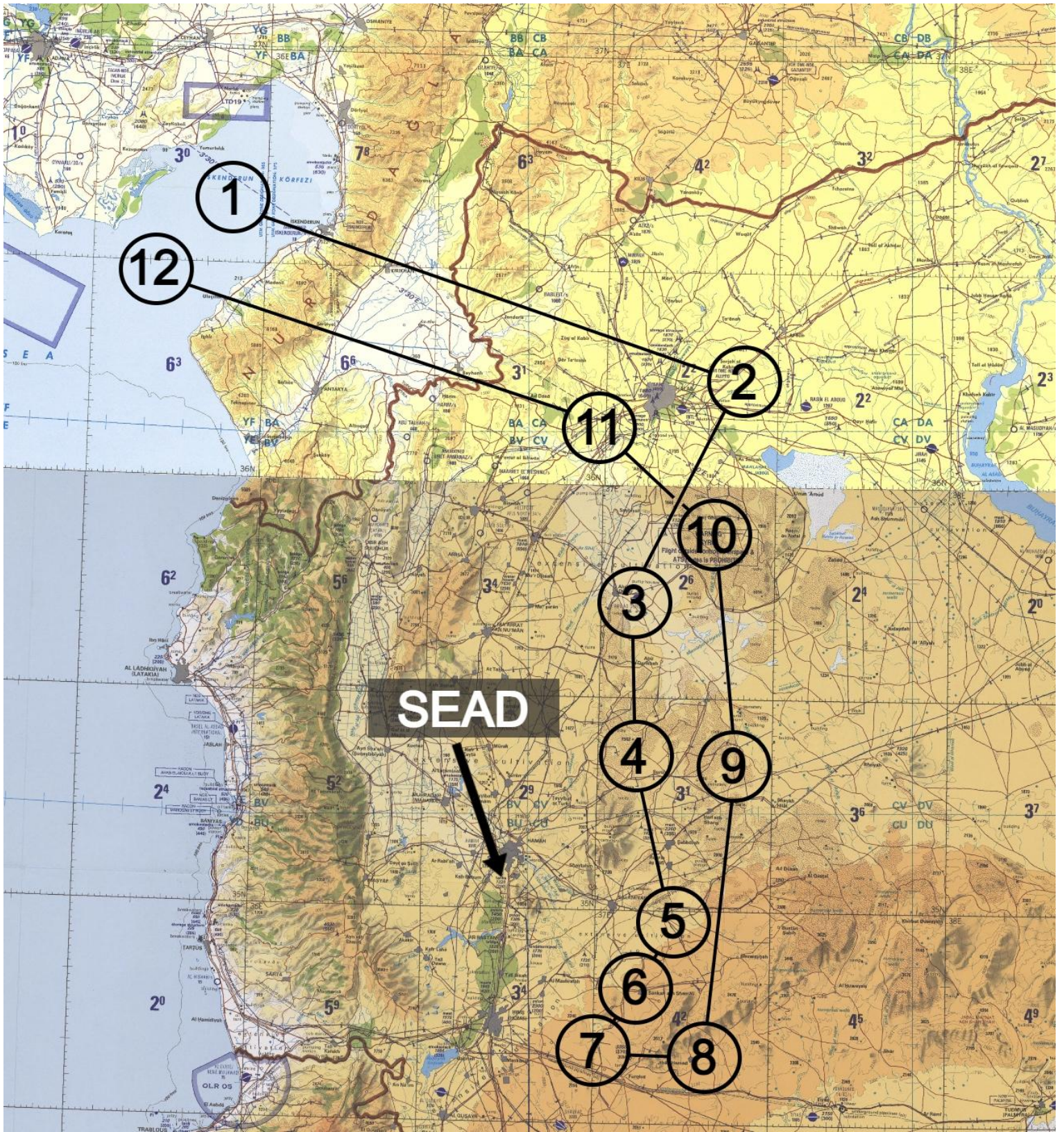
SA-11 'Snow Drift' Radar, N 34°37'02.86" E 37°00'14.93" 2209 feet

Secondary Objective:

Destruction of additional battery equipment and ammunition.







Fuel Plan:

Stage	Notes	Target Fuel lb
Takeoff		14721
Departure	<i>To 25k Ft</i>	13491
WP1	<i>25Kft @ M0.75</i>	12863
WP2	<i>25Kft @ M0.75</i>	11327
WP3	<i>25Kft @ M0.75</i>	10721
WP7	<i>150ft @ M0.80</i>	8951
Joker = 6684 lb	<i>CLIMB OUT</i>	
Bingo = 5934 lb	<i>DEPARTING @ 25Kft</i>	
WP11	<i>20Kft @ M0.75</i>	4554
WP12	<i>20Kft @ M0.75</i>	3466
Approach	<i>15Kft @ M0.75</i>	2566
Pattern & Landing		1532

Radio Plan:

Channel	Comm 1	Freq	Comm 2	Freq
1	<i>INK Ground</i>	250.2	<i>INK Ground</i>	128.1
2	<i>Devil 1</i>	260	<i>INK Tower</i>	128.2
3	<i>Cobra 2-6</i>	312.8	<i>INK Departure</i>	128.5
4	<i>Spartan 3-1</i>	325.2	<i>INK Approach</i>	128.3
5			<i>INK Arrival</i>	128.4
6			<i>INK ATIS</i>	128.95
7			<i>INK Emergency</i>	128.7
8			<i>Sentinel</i>	236.8
9			<i>Sentinel Actual</i>	240.4
10			<i>Texaco</i>	354.6
11			<i>Shell</i>	331.8
12			<i>Arco</i>	308.2

Threats:

P-19 EWR - 'Metro Blue', south Homs.

SA-6 - 'Metro Green', south of target.

SA-11 - 'Metro Red', south of Homs.

SA-11 - 'Metro Orange', TARGET, south of WP7.

ZU-23, SA-9 in direct target vicinity.

Numerous ZU-23, ZU-57, ZSU-23-4 and SA-9 located within 3 miles of target.

ZU-23 and ZU-57 located west of approach route (WP 5-7).

Shayrat airbase south of target.

Tiyas airbase, SA-6 east of egress (WP 8-9).

Assume MANPADs in target area.