

OCN SORTIE # 010713/5**Flight:**

Call Sign	Tail	Freq	TCN	Role	T/O Time	TOT	End Vul
Devil 1-2	309	260	N/A	Strike	02:02	02:30 PUSH	--:--
Devil 1-3	303	260	22X	Strike	01:58	02:30 PUSH	--:--
Devil 1-1	301	260	18X	Strike (spare)	02:30	--:--	--:--
Devil 1-4	304	260	N.A	Strike (spare)	02:30	--:--	--:--

Mission Support:

Call Sign	Freq	Role	Notes
Sentinel	236.8	ABCCC	
Sentinel Actual	240.4	Mission Commander	
Shell	331.8	AAR	TACAN 98Y
Arco	308.2	AAR	TACAN 74X
Texaco	354.6	AAR	TACAN 66X
Dagger 2-1	322.8	OCA	
Spartan 5-4	278.2	EW	
Cobra 2-2	354.8	SEAD	
Cobra 4-1	301.4	SEAD	

Loadout:

Station 1	AIM-9M	Station 5	FPU-8A FUEL TANK
Station 2	AGM-88C	Station 6	AIM-120C
Station 3	GBU-31 (V) 4/B	Station 7	FPU-8A FUEL TANK
Station 4	LITENING TGP	Station 8	AGM-88C
Countermeasures	40 Chaff, 40 Flare	Station 9	AIM-9M
Fuel	15,291 lb	Gross Weight	47,801 lb

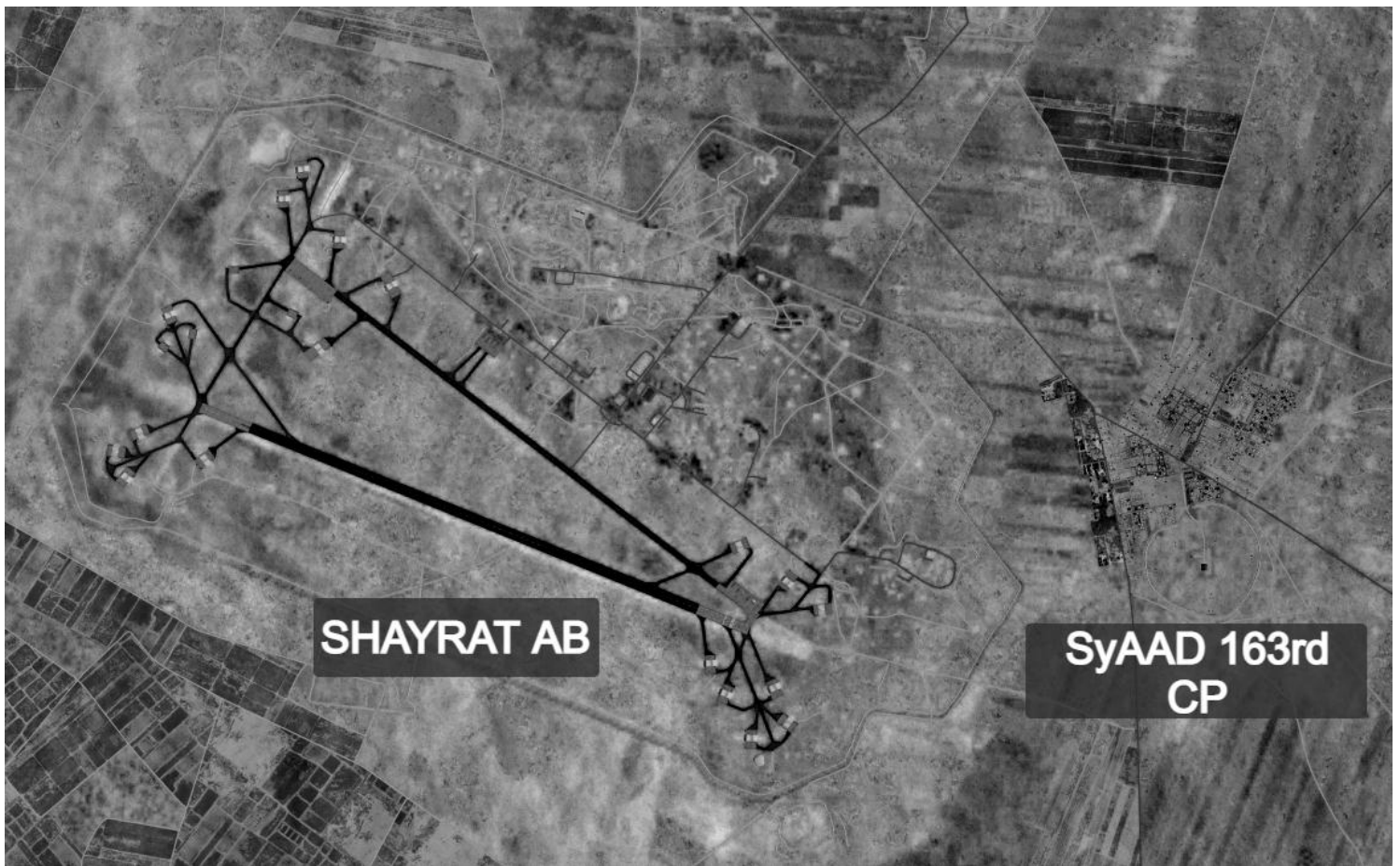
Weather:

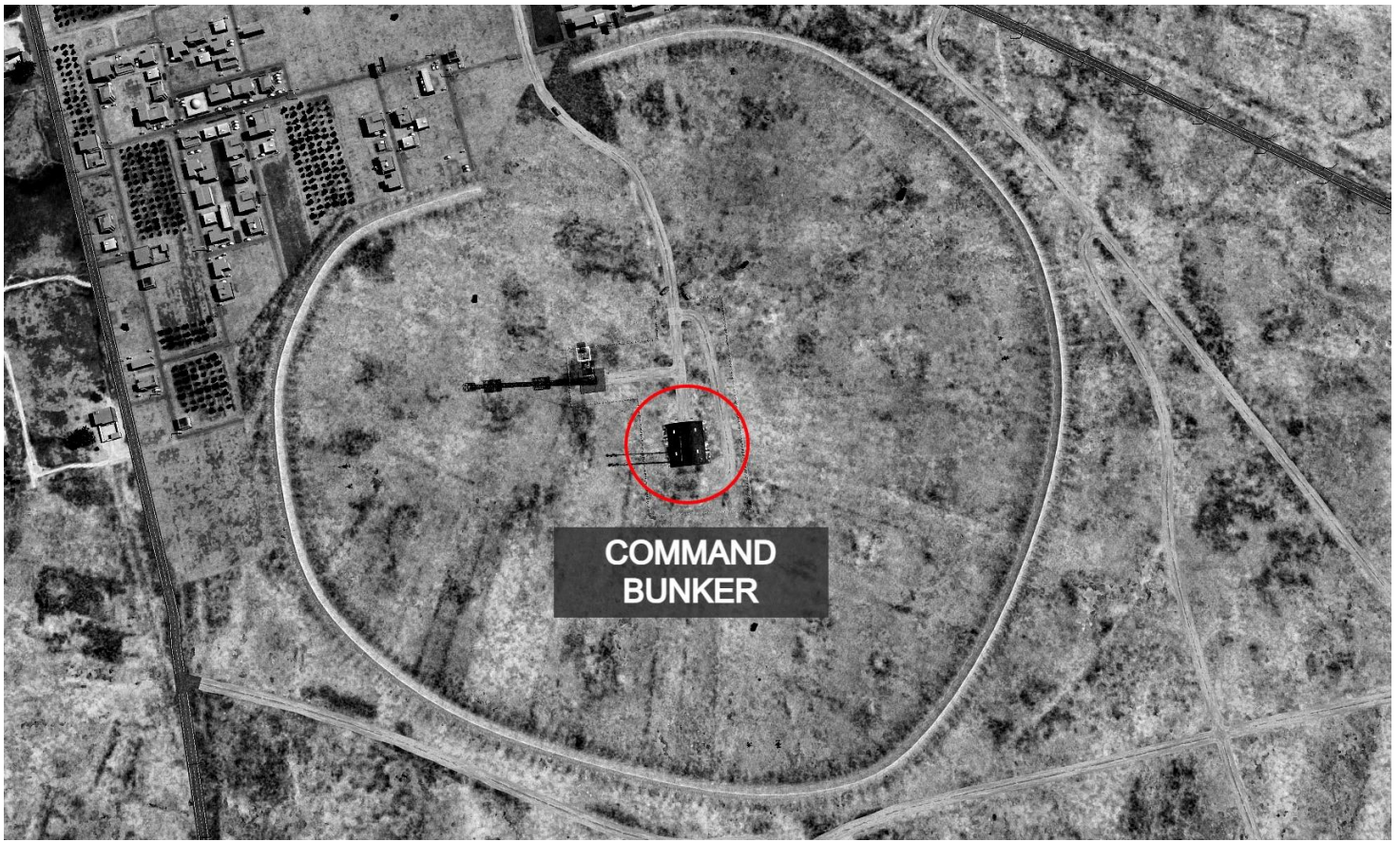
Clouds	Wind	Temperature	Precipitation
Scattered 8-9 Kft Scattered 21 Kft	190 @ 2kn GL 123@ 3Kn 6600ft 234 @ 10Kn 26000 ft	15°C	None

Primary Objective:

Destruction of target CHARLIE (163rd SyAAD regimental command centre).

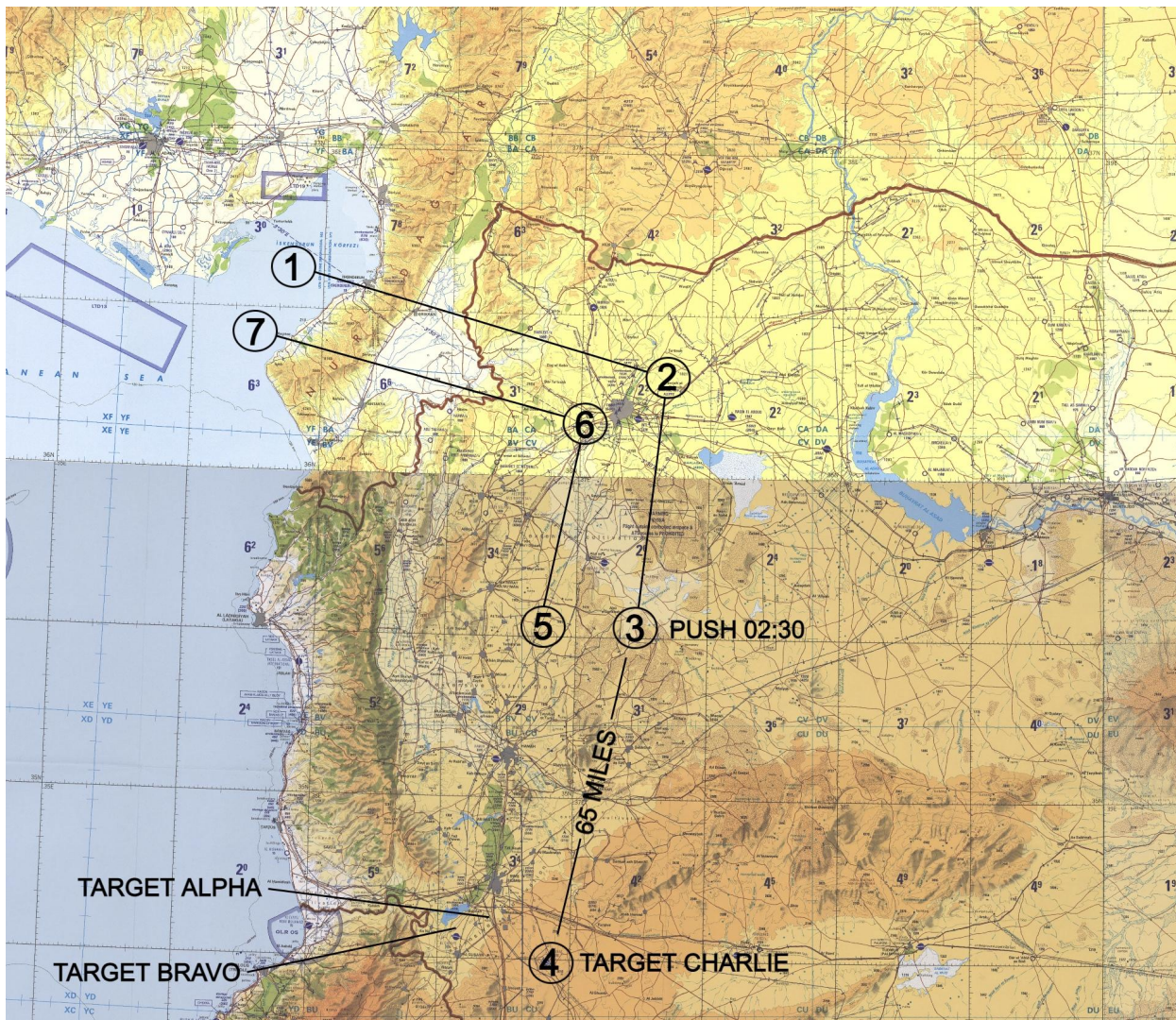
Location: N34°29'17.31" E36°56'53.49" 2638 Feet MSL





Flight Plan:

WP	Alt Kft	Mach	Notes
1	25	0.75	RV Newt
2	25	0.75	Exit Gold
3	25	0.75	Push 02:30
4			TARGET
5	25	0.75	
6	20	0.75	Enter Gold
7	20	0.75	
BULLS N 35°43'59" E 37°06'17"			



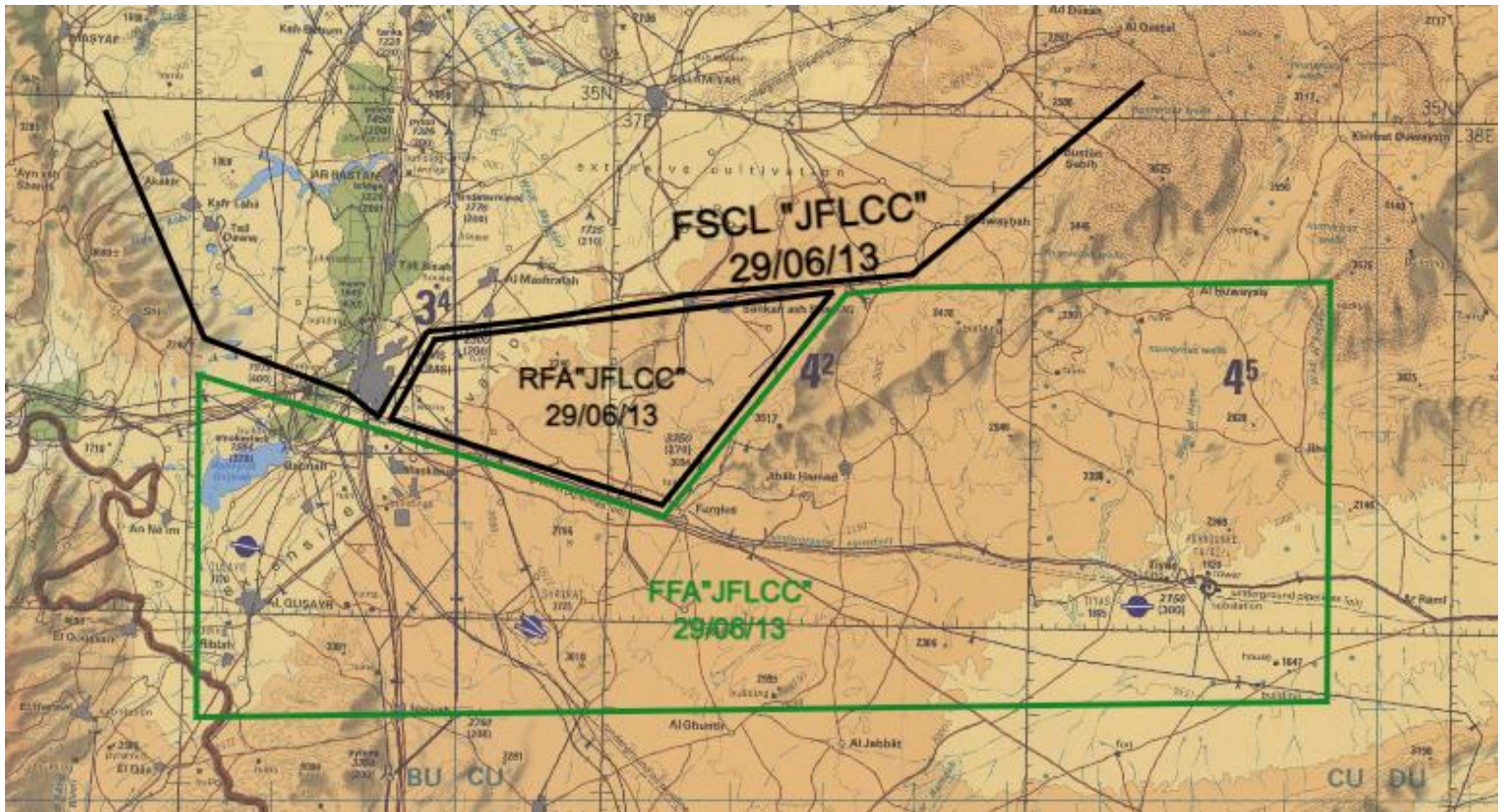
Fuel Plan:

Stage	Notes	Target Fuel lb
Departure	To 25k Ft	13,491
WP1	FL250, M0.75	12,901
WP2	FL250, M0.75	11,694
WP3	FL250, M0.75	10,963
WP 3 → TARGET	TBC	
Joker = 6883	<i>Allowance to climb out to altitude</i>	
Bingo = 6133		
WP5	FL250, M0.75	4978
WP6	FL200, M0.75	4468
WP7	FL200, M0.75	3493

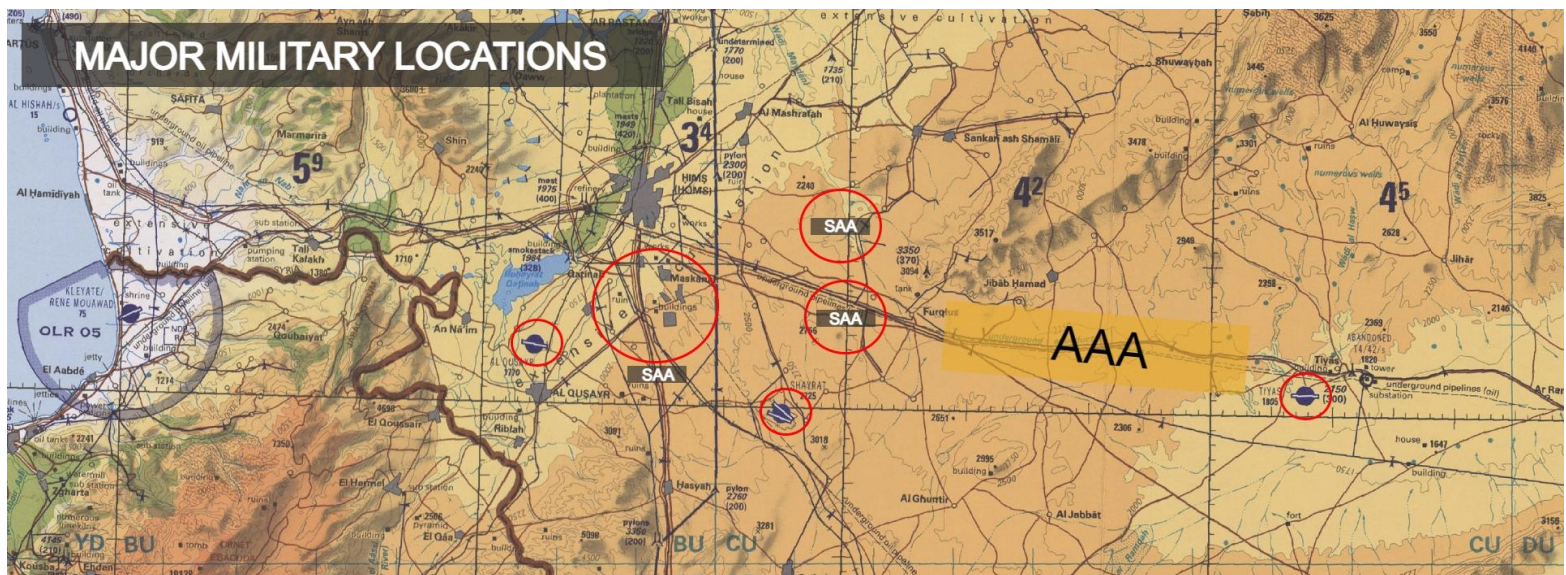
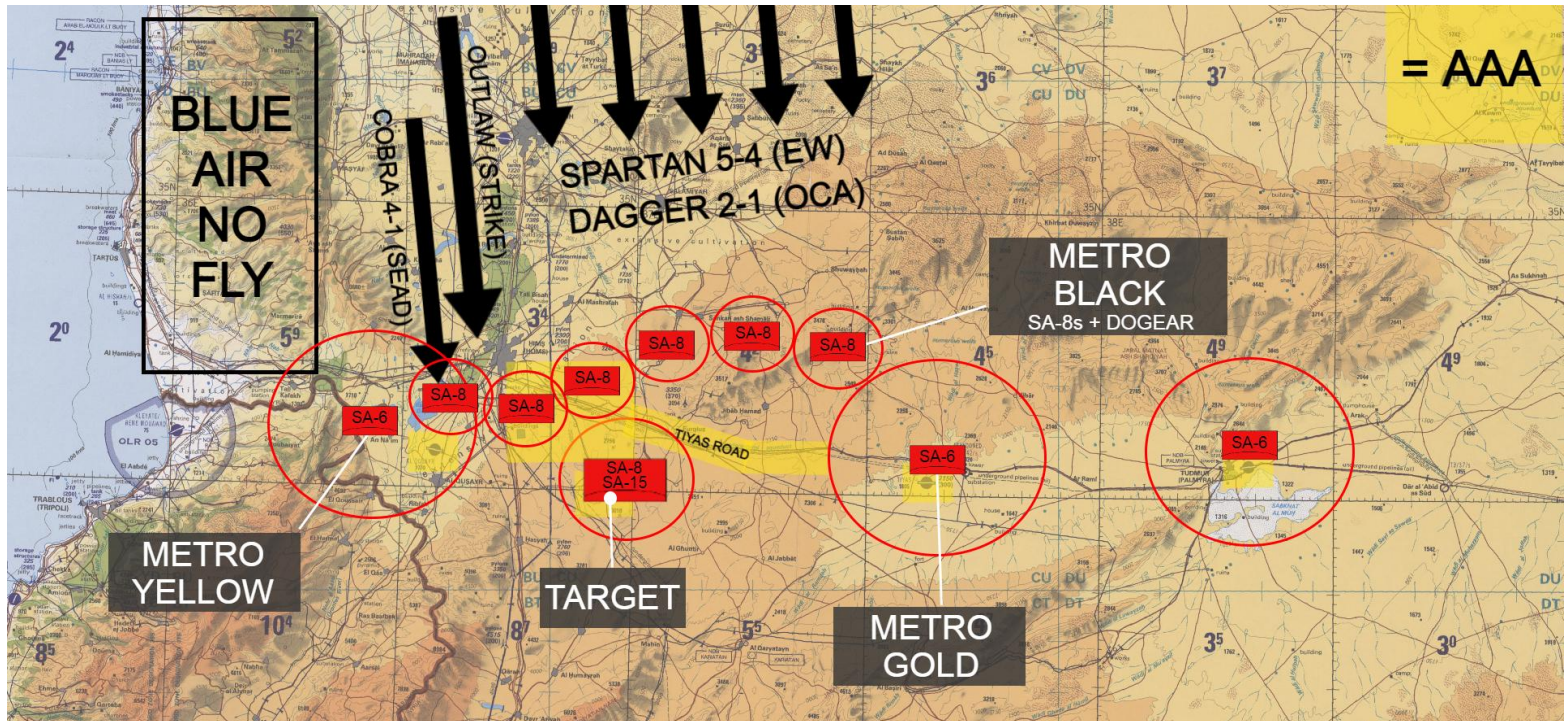
Radio Plan:

Channel	Comm 1	Freq	Comm 2	Freq
1	INK Ground	250.2	INK Ground	128.1
2	Devil 1	260	INK Tower	128.2
3	Colt 2-1	322.8	INK Departure	128.5
4	Spartan 5-4	278.2	INK Approach	128.3
5	Cobra 2-2	354.8	INK Arrival	128.4
6	Cobra 4-1	301.4	INK ATIS	128.95
7			INK Emergency	128.7
8			Sentinel	236.8
9			Sentinel Actual	240.4
10			Texaco	354.6
11			Shell	331.8
12			Arco	308.2

Air Support Chart:



Threats:



- SA-6 west of Homs.
- SA-6 Tiyas airbase.
- At least 6 SA-8 under Dogear control covering the area from Homs - Tiyas.
- Anticipate low and high altitude AAA and IR SAMS at all airbases, SAA bases and on the southern side of Homs.
- AAA protecting the Tiyas to Homs road.
- AAA/SA-9 at target Charlie, SA-8 and SA-15 at nearby Shayrat airbase.

HARM Emitter Codes:

EMITTER	RWR	ID CODE
<i>SA-2</i>	<i>2</i>	<i>126</i>
<i>SA-3</i>	<i>3</i>	<i>123</i>
<i>SA-6</i>	<i>6</i>	<i>108</i>
<i>SA-8</i>	<i>8</i>	<i>117</i>
<i>SA-10 TR</i>	<i>10</i>	<i>110</i>
<i>SA-10 SR</i>	<i>BB</i>	<i>104</i>
<i>SA-10 SR</i>	<i>CS</i>	<i>103</i>
<i>SA-11 TEL</i>	<i>11</i>	<i>115</i>
<i>SA-11 SR</i>	<i>SD</i>	<i>107</i>
<i>SA-15</i>	<i>15</i>	<i>119</i>
<i>SA-19</i>	<i>19</i>	<i>120</i>
<i>EWR 1L13</i>	<i>S</i>	<i>101</i>
<i>EWR 55G6</i>	<i>S</i>	<i>102</i>
<i>P-19 EWR</i>	<i>S</i>	<i>122</i>
<i>SBORKA</i>	<i>DE</i>	<i>109</i>
<i>ZSU-23-4</i>	<i>A</i>	<i>121</i>