

Date: 08/21/13

Callsign: Sword 2-1

ATO Syria

Mission# 6001	Step 02:00Z	Startup 02:50Z	Takeoff 03:00Z
TGT Area North Damascus TOT 03:30Z	Weather 21°C Scattered ~ 8,000ft Winds 288 9 Kn @ GL Winds 276 17 Kn @ 6600 Winds 348 30 Kn @ 26000		

A/C#	Pilot	TACAN	Spot
942	Forrest - Sword 2-1		11
851	Boomer - Sword 2-2	38X	13

Loadout

9	8	7	6	5R	5	5L	4	3	2	1
120C	9X	2* GBU 38	Fuel	TGP	ALQ 184L	HTS	Fuel	2* AGM 65D	9X	120C

Chaff / Flare 90 Chaff / 30 Flares Gun SAPHEI

Fuel 12,113 lb Gross Weight 39,811 lb

Wrench 2 TOT 03:45Z

Date: **08/21/13**Callsign: **Sword 2-1**

ATO Syria

Function	Callsign	Freq	
ABCCC	Sentinel	236.800	
Rivet Joint	Vacuum	293.400	
AWACS West	Darkstar	287.600	
AWACS East	Magic	283.150	
AAR West	Arco	308.200	74 X
AAR North	Texaco	354.600	66 X
AAR East	Shell	331.800	89 Y

AKROTIRI ATC	COMM 1 UHF		COMM 2 VHF
Ground 122.100	Darkstar	1	Akr Ground
Tower 130.100	Magic	2	Akr Tower
Dep' ture 124.200	Arco	3	Akr Departure
Appr' ch 123.600	Shell	4	Akr Approach
Emerg' cy 133.300	Texaco	5	Akr Emergency
ATIS 125.000	Sentinel	6	Akr ATIS
TACAN 107X	Vacuum	7	Sword 2
	Strike	8	Blue 1
Sword 2	Black 1	9	Blue 2
VHF 141.6	Black 2	10	Blue 3
Strike	Black 3	11	Red 1
UHF 366.2	Magenta 1	12	Red 2
	Magenta 2	13	Red 3
	Magenta 3	14	Red 4
	Indigo 1	15	Purple 1
	Indigo 2	16	Purple 2
	White 1	17	Purple 3
	White 2	18	Yellow 1
	Green 1	19	Yellow 2
	Green 2	20	Yellow 3

Date: 08/21/13

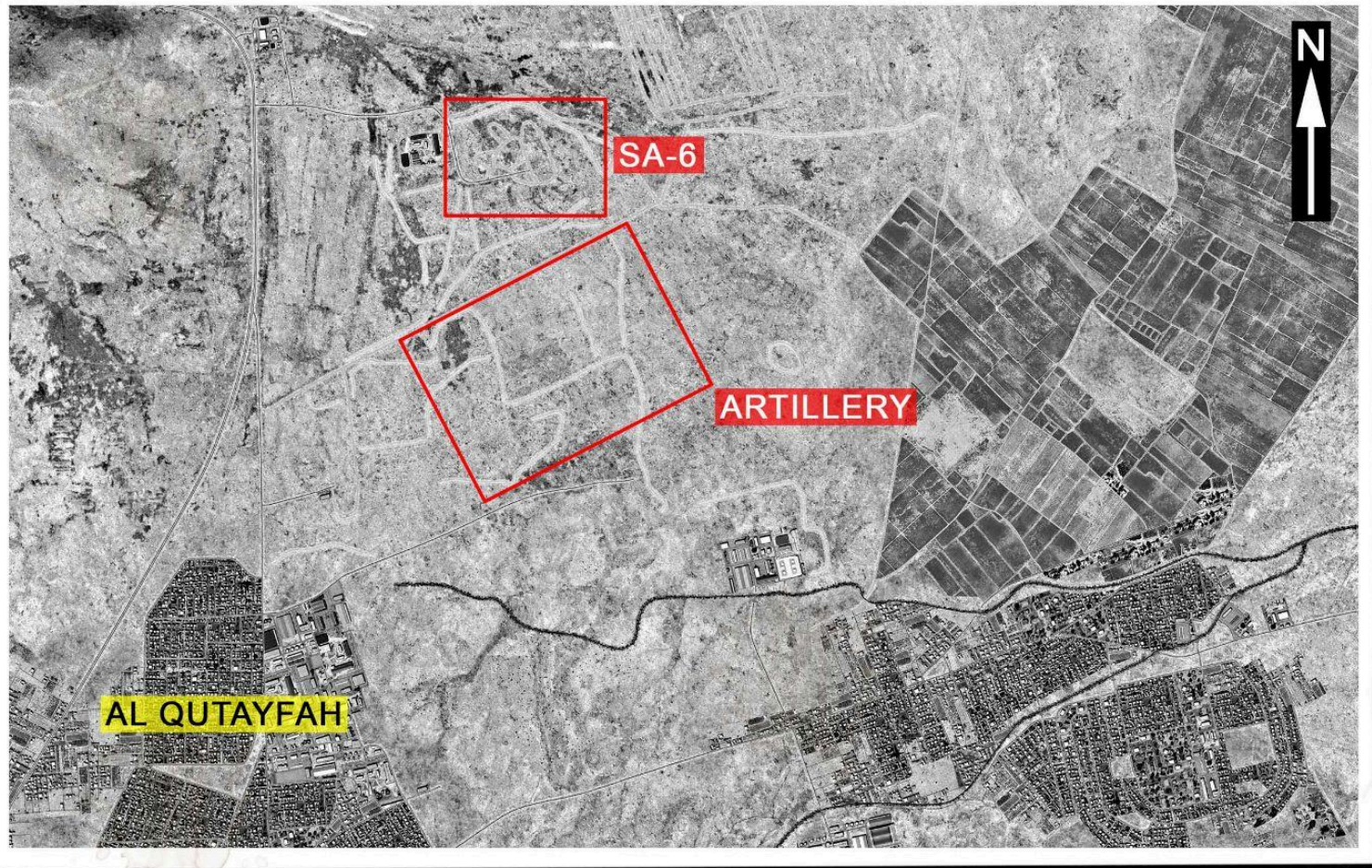
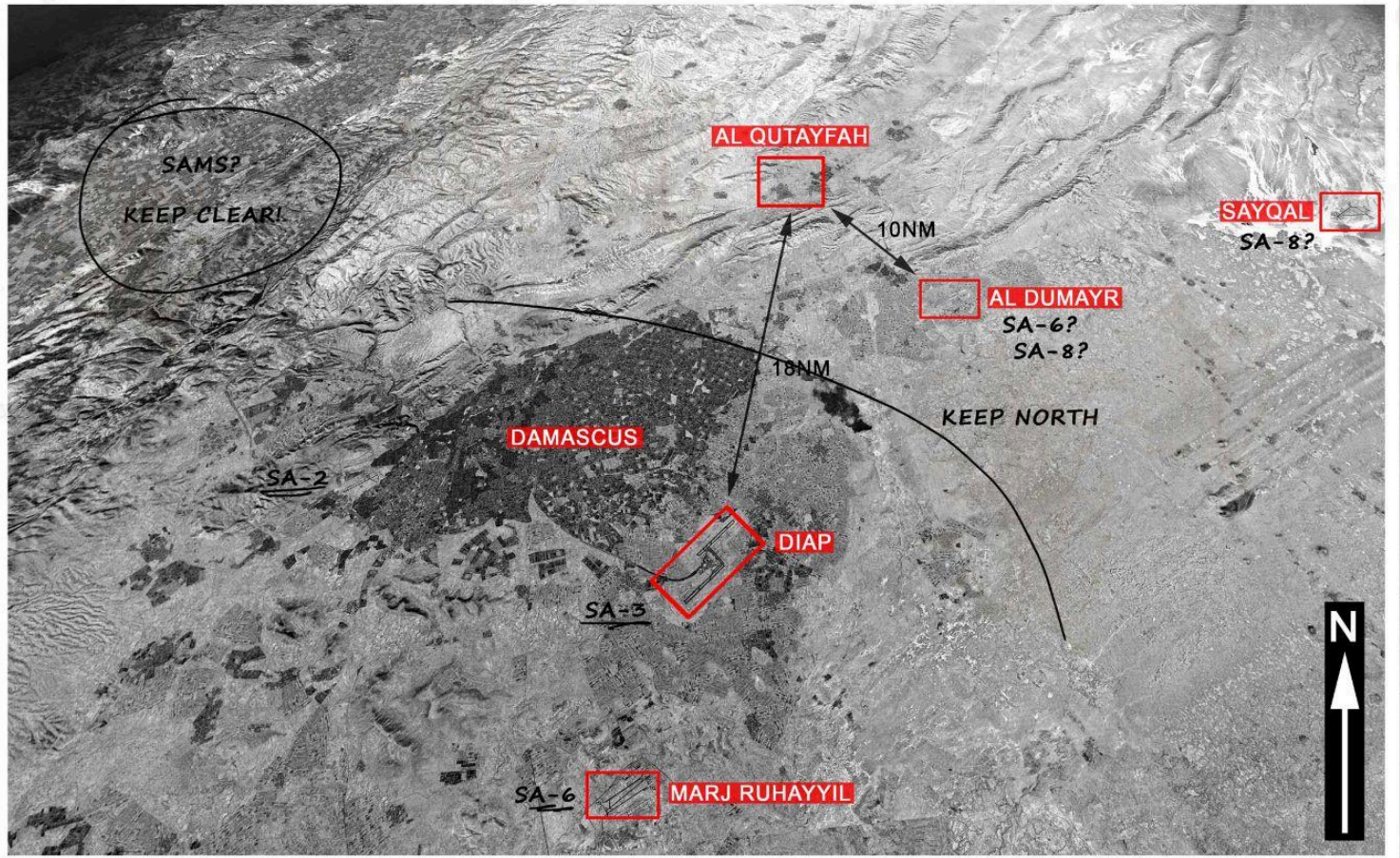
Callsign: Sword 2-1

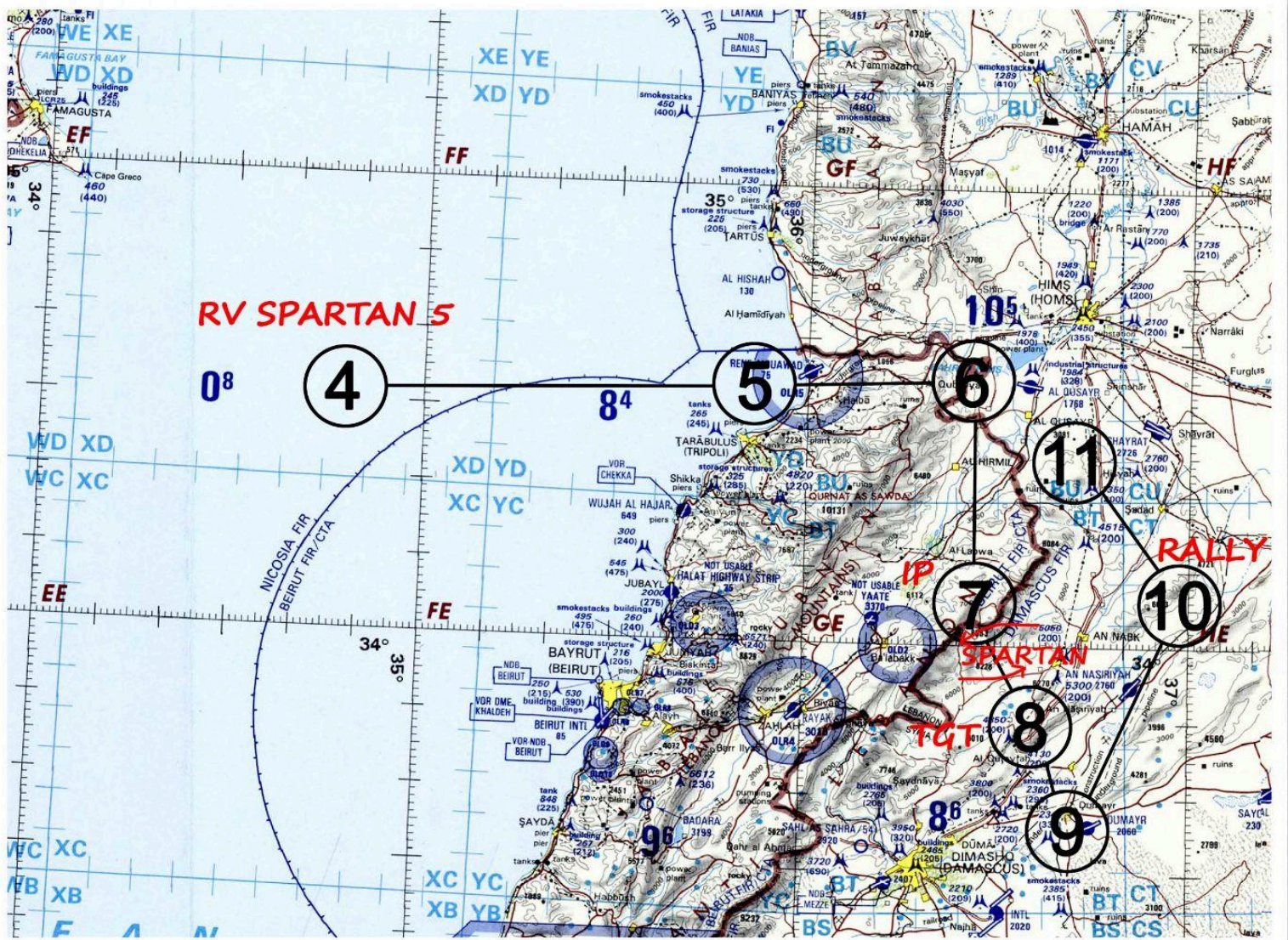
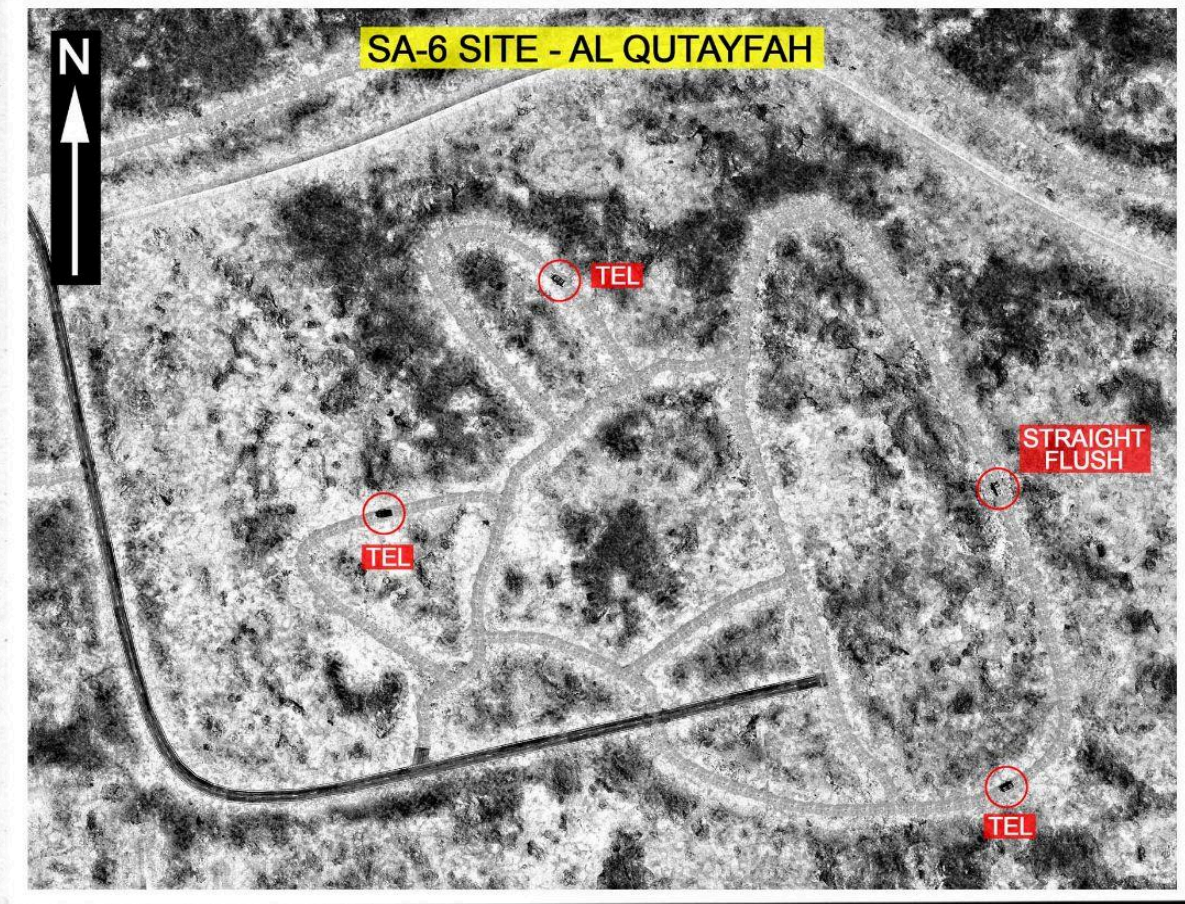
ATO Syria

Flight Plan	WP	Fuel Plan
MEZUS	1	
ANANE	2	
IREFA	3	
25K FT, MO.65 SPARTAN 5	4	9,834 lb
SILVER - MO.65	5	9,064 lb
PUSH SOUTH	6	8,728 lb
IP	7	8,308 lb
AL QUTAYFAH - SA-6	8	
AL DUMAYR	9	
RALLY 15K FT	10	2,848 lb
20K FT, MO.7	11	2,688 lb
SILVER - TBC	6	2,464 lb
SILVER - TBC	5	2,224 lb
25K FT, MO.7	4	1,674 lb

Bullseye: PORTAL

Bingo 3200 lb





THREATS

SA-6: MEZ = 15nm HAD Class 2

SA-8: MEZ = 6nm, Max alt = 16,000 ft HAD Class 2

SA-15: MEZ = 8nm, Max alt = 25,000 ft HAD Class 1

MANPAD/SA-9: MEZ = 3nm, Max alt = 12,000 ft

KS-19, WEZ = 10nm, Max Alt = 49,000 ft

S-60, WEZ = 3nm, Max Alt = 20,000 ft

ZU-23, WEZ = 2.5nm, Max Alt = 7,000 ft

ZSU-23-4, WEZ = 1.5nm, Max Alt = 7,000 ft