

Date: 08/15/13

Callsign: Sword 2-1

ATO Syria

Mission# 4621	Step 13:50Z	Startup 14:45Z	Takeoff 14:55Z
---------------	-------------	----------------	----------------

TGT Area Palmyra TOT 15:44Z	Weather 30°C Broken ~ 16,000ft Winds 104 3 Kn @ GL Winds 241 11Kn @ 6600 Winds 132 26 Kn @ 26000
--------------------------------------	--

A/C#	Pilot	TACAN	Spot
942	Forrest - Sword 2-1		7
966	Bug - Sword 2-2	35X	9
899	Shade - Sword 1-1	28X	12
933	Tank - Sword 3-1	30X	10

Loadout

9	8	7	6	5R	5	5L	4	3	2	1
120C	9X	2* GBU 12	Fuel	TGP	ALQ 184L	HTS	Fuel	2* GBU 12	9X	120C

Chaff / Flare 60 Chaff / 60 Flares

Gun SAPHEI

Fuel 12,113 lb

Gross Weight 39,798 lb

Date: **08/15/13**Callsign: **Sword 2-1**

ATO Syria

Function	Callsign	Freq	
ABCCC	Sentinel	236.800	
Rivet Joint	Vacuum	293.400	
AWACS West	Darkstar	287.600	
AWACS East	Magic	283.150	
AAR West	Arco	308.200	74 X
AAR North	Texaco	354.600	66 X
AAR East	Shell	331.800	89 Y

AKROTIRI ATC	COMM 1 UHF		COMM 2 VHF
Ground 122.100	Darkstar	1	Akr Ground
Tower 130.100	Magic	2	Akr Tower
Dep' ture 124.200	Arco	3	Akr Departure
Appr' ch 123.600	Shell	4	Akr Approach
Emerg' cy 133.300	Texaco	5	Akr Emergency
ATIS 125.000	Sentinel	6	Akr ATIS
TACAN 107X	Vacuum	7	Sword 1
	Strike	8	Sword 2
Sword 2	Green 1	9	Sword 3
VHF 141.6	Green 2	10	Red 1
Strike	Black 1	11	Red 2
UHF 332.0	Black 2	12	Purple 1
	Black 3	13	Purple 2
	White 1	14	Purple 3
	White 2	15	Blue 1
	Magenta 1	16	Blue 2
	Magenta 2	17	Blue 3
	Magenta 3	18	Yellow 1
	Indigo 1	19	Yellow 2
	Indigo 2	20	Yellow 3

Date: 08/15/13

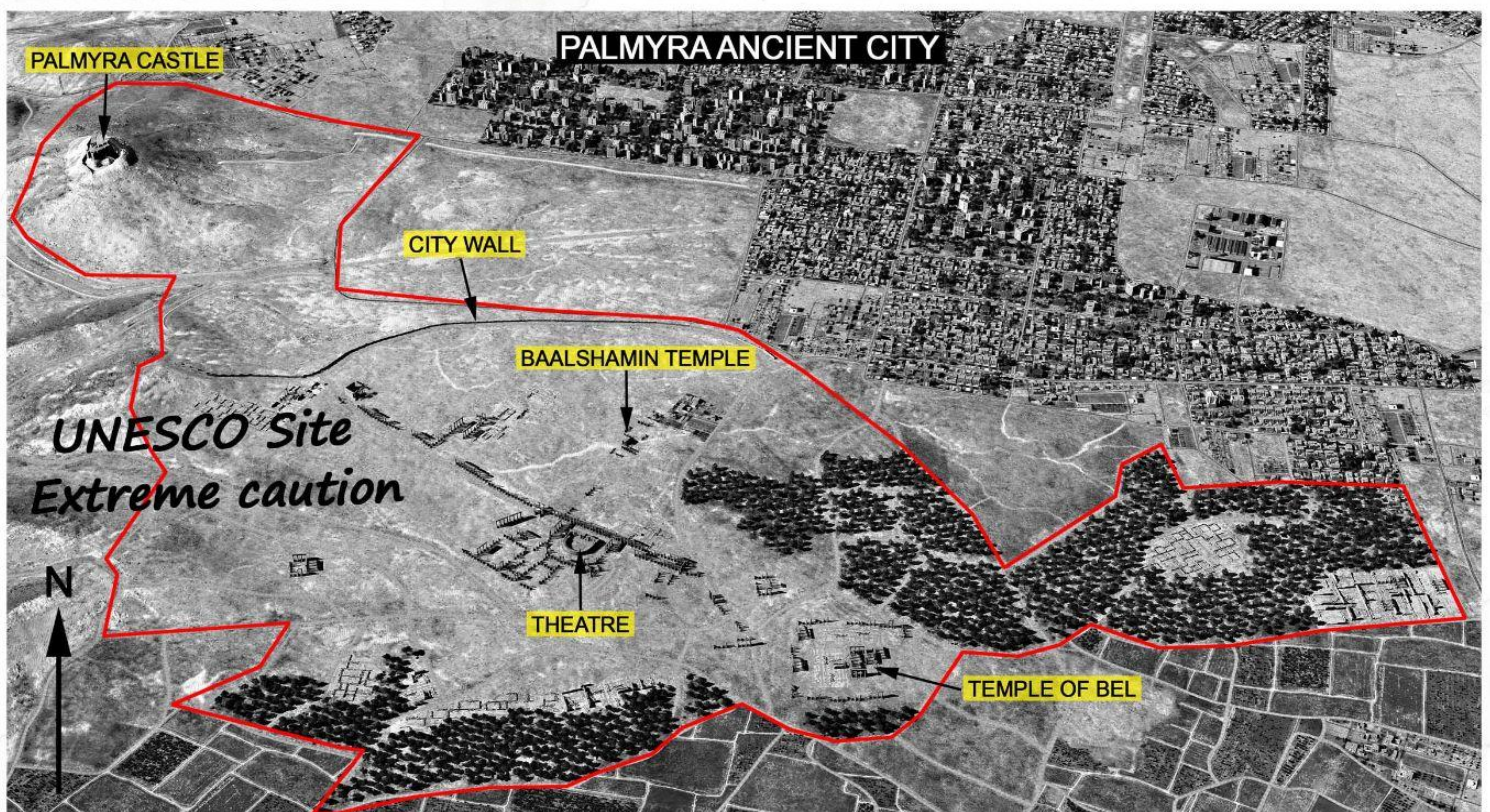
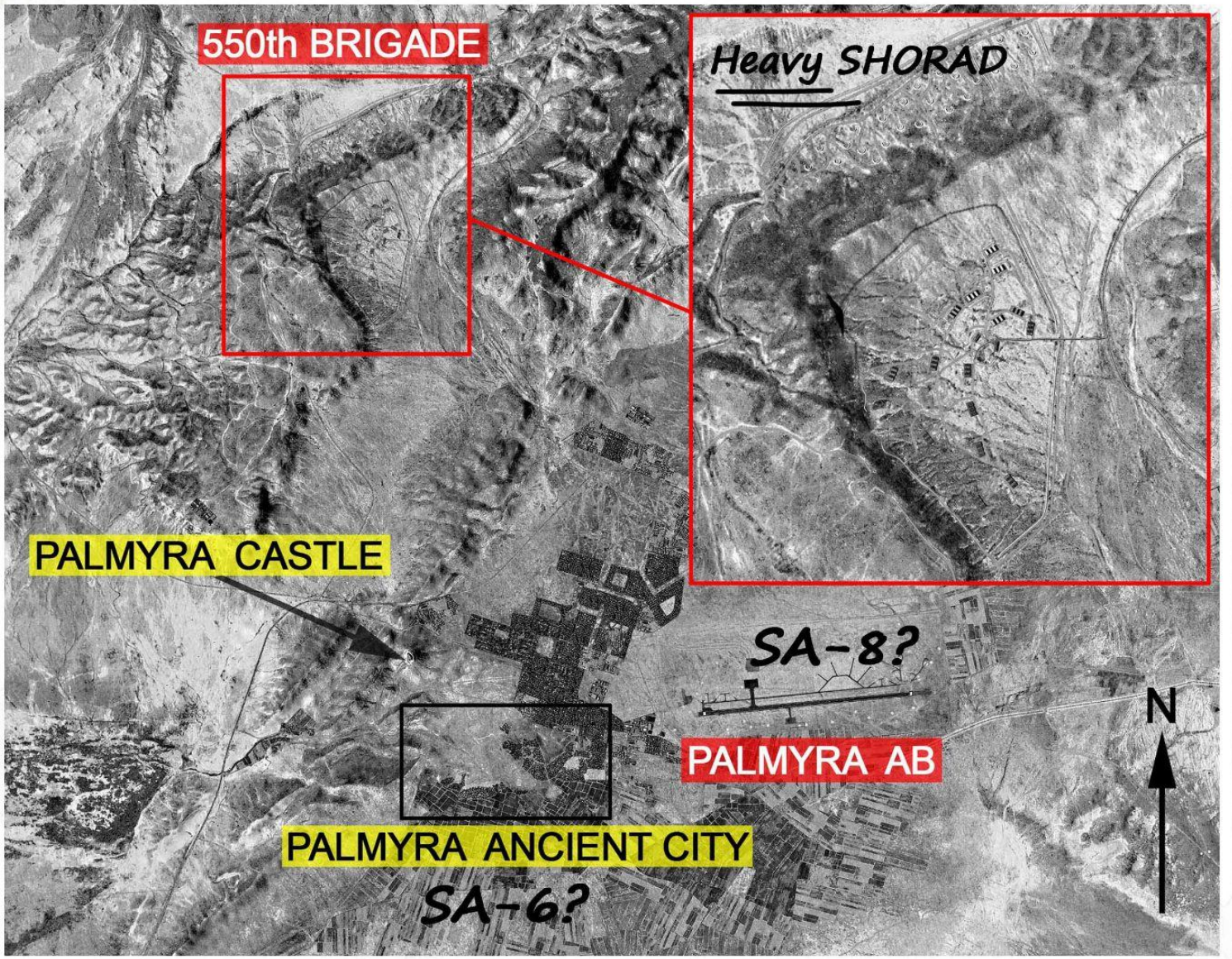
Callsign: Sword 2-1

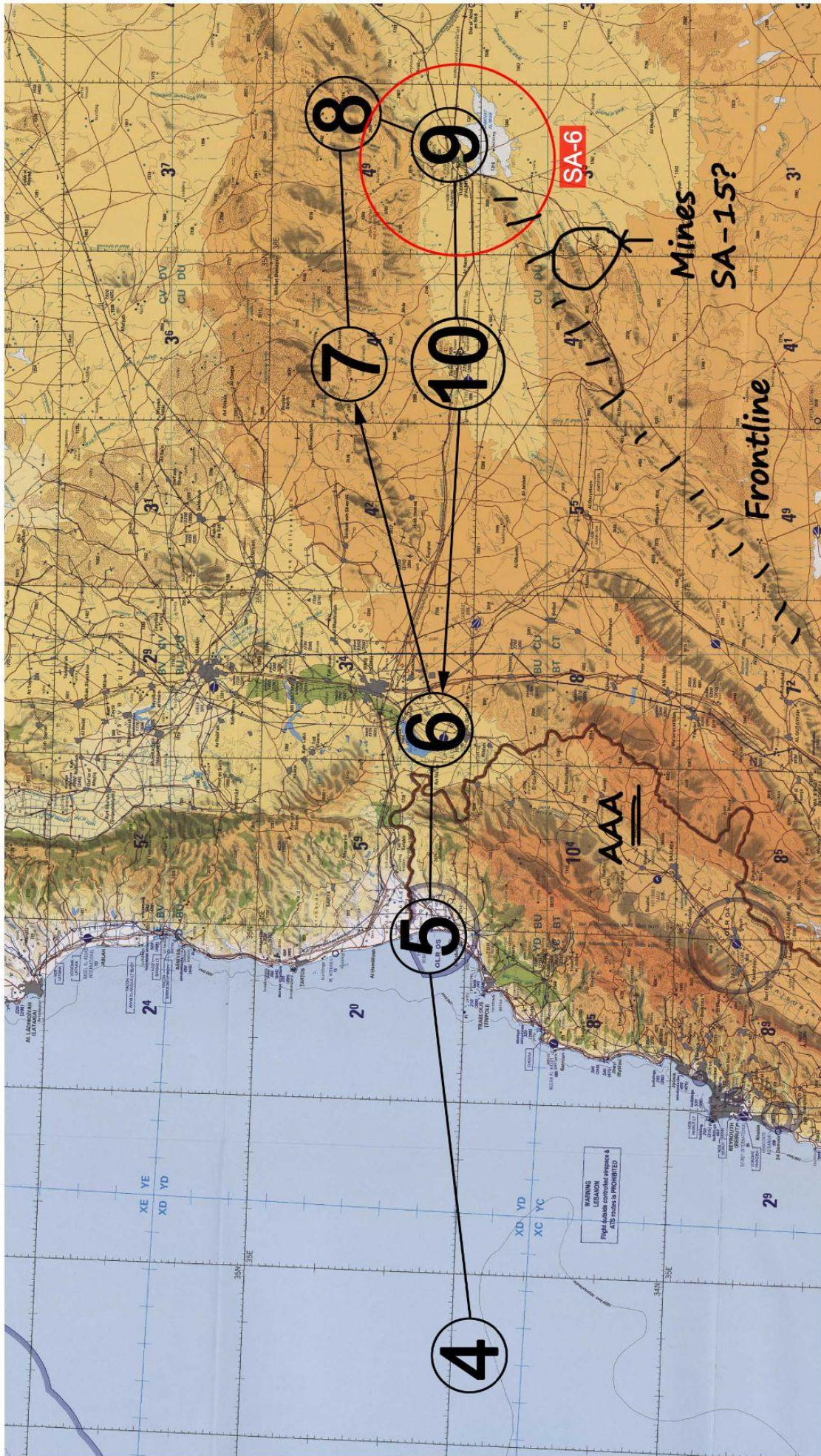
ATO Syria

Flight Plan	WP	Fuel Plan
MEZUS	1	
ANANE	2	
IREFA	3	
25K FT, MO.65	4	10,379 lb
SILVER - MO.65	5	9,077 lb
SILVER - MO.65	6	8,685 lb
25K FT - RV SPARTAN	7	7,705 lb
IP - 15K FT	8	7,425 lb
PALMYRA	9	
15K FT, MO.7 - EGRESS	10	3,295 lb
SILVER - MO.7	6	2,765 lb
SILVER - MO.7	5	2,485 lb
25K FT, MO.7	4	1,555 lb

Bullseye: PORTAL

Bingo 3625 lb





THREATS

SA-6: MEZ = 15nm HAD Class 2

SA-8: MEZ = 6nm, Max alt = 16,000 ft HAD Class 2

SA-15: MEZ = 8nm, Max alt = 25,000 ft HAD Class 1

MANPAD/SA-9: MEZ = 3nm, Max alt = 12,000 ft

KS-19, WEZ = 10nm, Max Alt = 49,000 ft

S-60, WEZ = 3nm, Max Alt = 20,000 ft

ZU-23, WEZ = 2.5nm, Max Alt = 7,000 ft

ZSU-23-4, WEZ = 1.5nm, Max Alt = 7,000 ft