

OCN SORTIE # 200813/8**Flight:**

Call Sign	Tail	Freq	TCN	Role	T/O Time	TOT	End Vul
Devil 1-2	309	260	N/A	DEAD	05:25	TBC	TBC
Devil 1-3	303	260	92X	DEAD	05:57	TBC	TBC

Mission Support:

Call Sign	Freq	Role	Notes
Sentinel	236.8	ABCCC	
Sentinel Actual	240.4	Mission Commander	
Shell	331.8	AAR	TACAN 98Y
Arco	308.2	AAR	TACAN 74X
Texaco	354.6	AAR	TACAN 66X

Loadout:

Station 1	AIM-9M	Station 5	FPU-8A FUEL TANK
Station 2	2 x AGM-154A	Station 6	AIM-120C
Station 3	GBU-32	Station 7	GBU-32
Station 4	LITENING TGP	Station 8	2 x AGM-154A
Countermeasures	70 Chaff, 50 Flare	Station 9	AIM-9M
Fuel	13,047 lb	Gross Weight	48,120 lb

Weather:

Clouds	Wind	Temperature	Precipitation
Scattered 8-10 Kft	212 @ 3 Kn GL 069 @ 8 Kn 6600 ft 234 @ 14 Kn 26000 ft	16°C	None

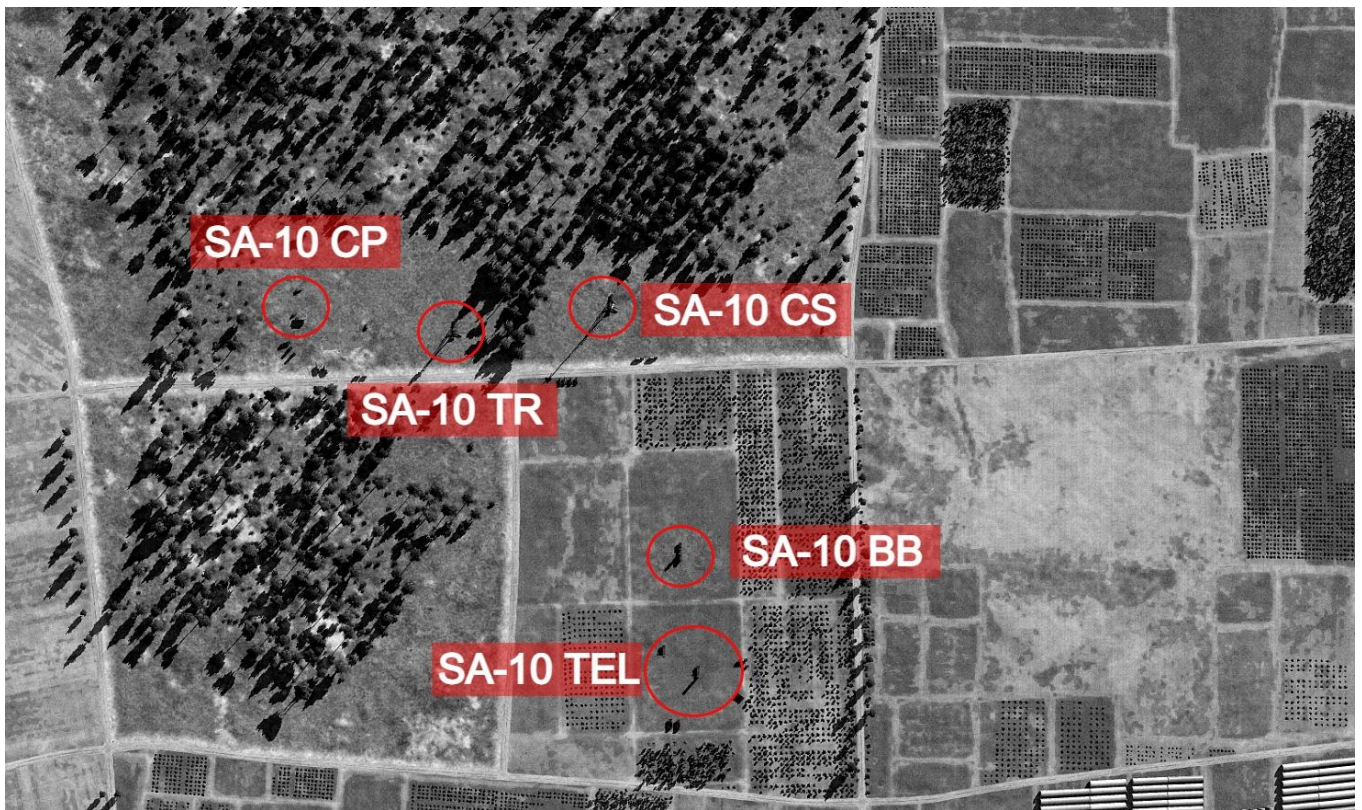
Primary Objective:

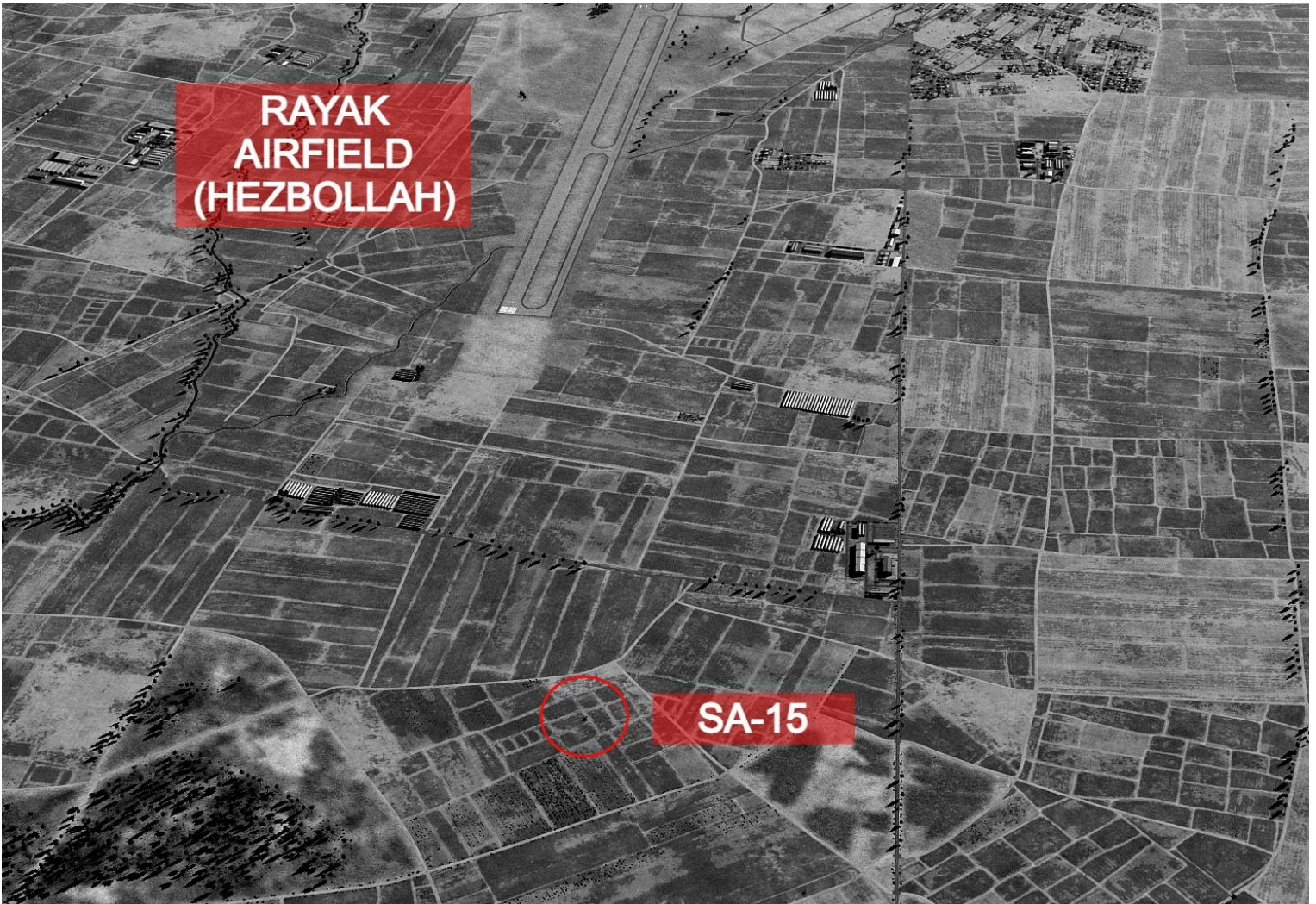
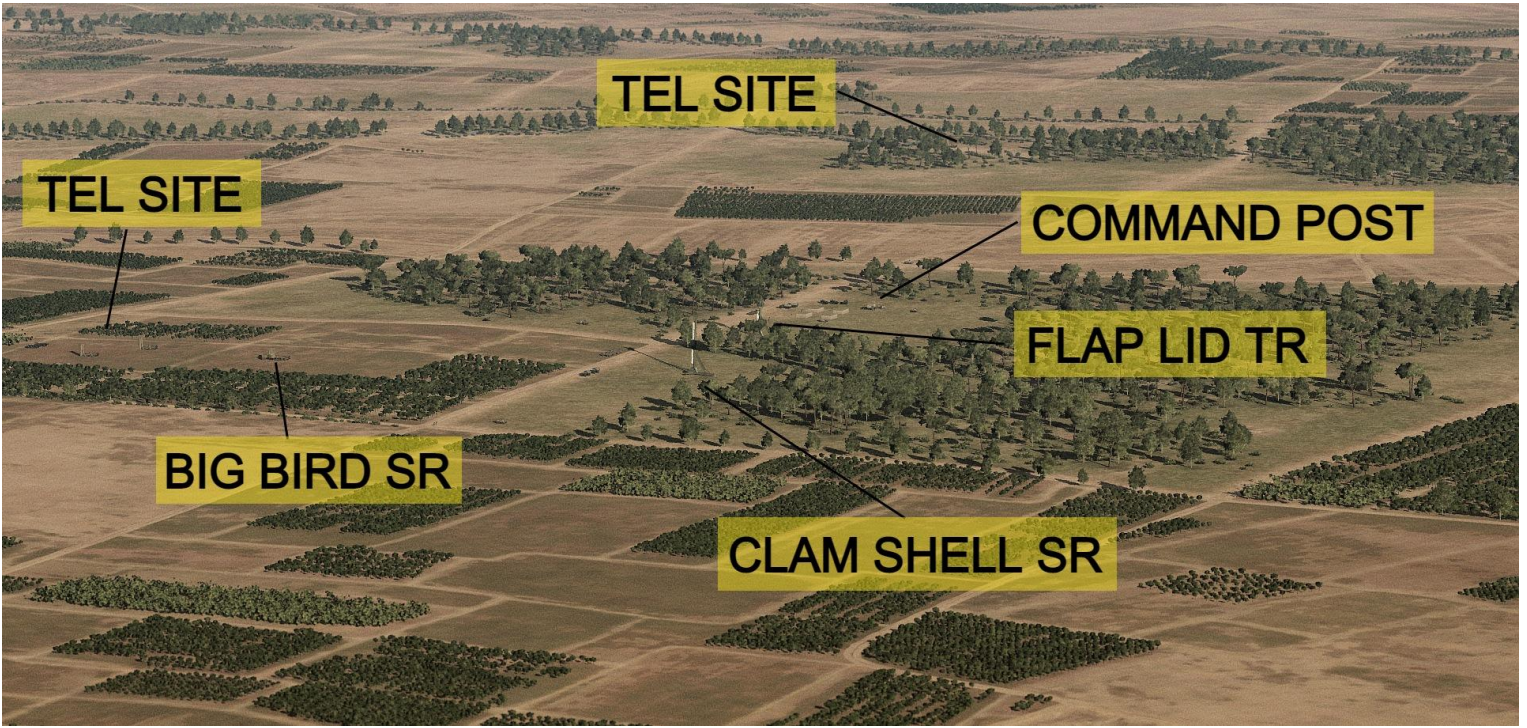
SA-10 CP	N33°44'54.05"	E35°53'40.34"	2843 feet
SA-10 "FLAP LID" TR	N33°44'49.86"	E35°53'44.75"	2841 feet

Secondary Objective:

SA-10 "CLAM SHELL" SR	N33°44'46.60"	E35°53'50.35"	2837 feet
SA-10 "BIG BIRD" SR	N33°44'38.57"	E35°53'45.18"	2851 feet
SA-10 TEL (SOUTH SITE)	N33°44'35.04"	E35°53'42.16"	2844 feet
SA-10 TEL (SOUTH SITE)	N33°44'36.43"	E35°53'41.68"	2847 feet
SA-10 TEL (NORTH SITE)	N33°45'13.15"	E35°52'52.47"	2825 feet
SA-10 TEL (NORTH SITE)	N33°45'14.56"	E35°52'51.49"	2822 feet







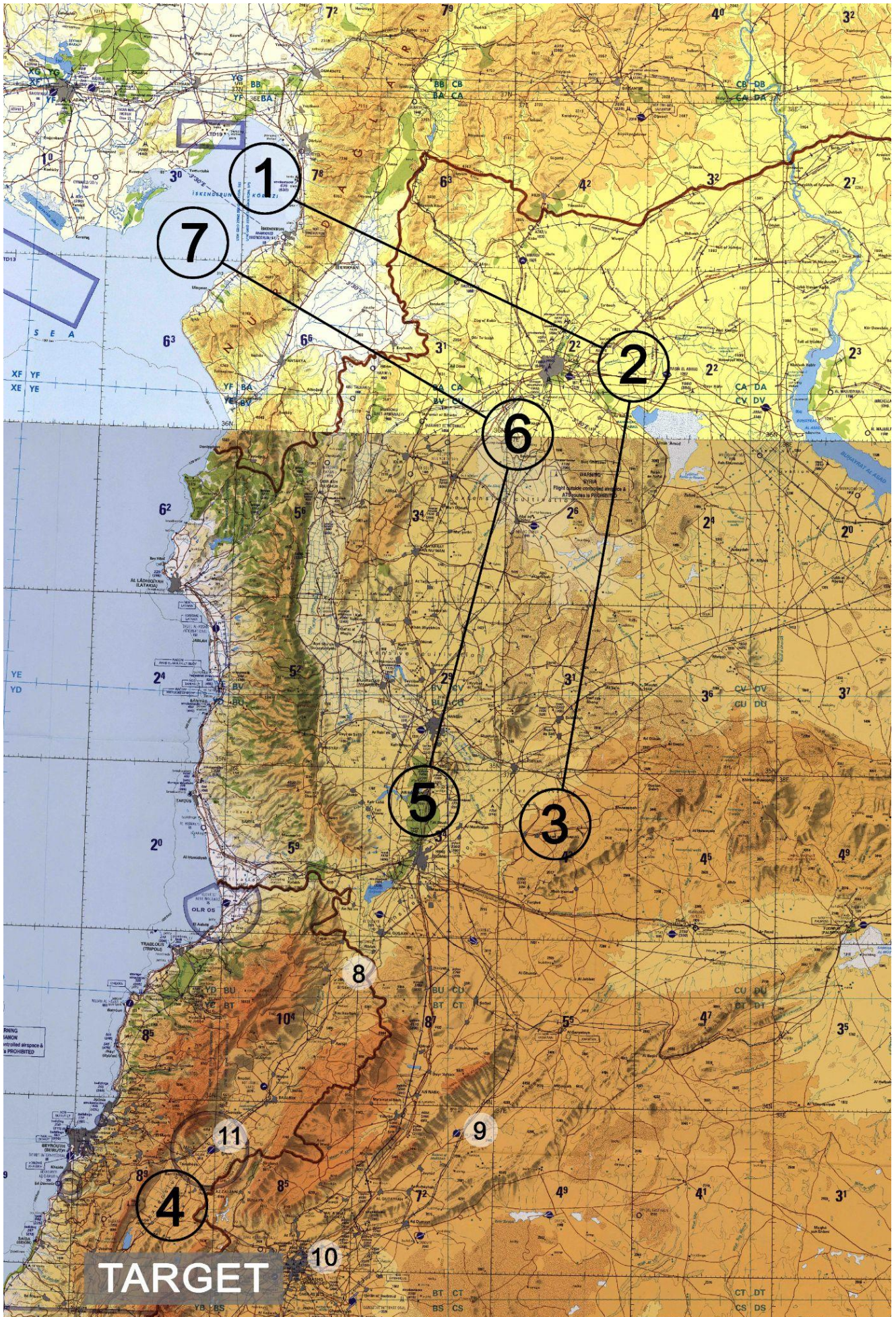
SA-15 position: ***N33°49'37.58" E35°58'03.07"*** ***2893 feet***

Flight Plan:

WP	Alt Kft	Mach	Notes
1	25	0.75	RV
2	25	0.75	ALEPPO
3	25	0.75	TEXACO - AAR
4			TARGET
5	25	0.75	EGRESS
6	20	0.75	ALEPPO
7	20	0.75	MTCA
8			NAV POINT - BEKAA NORTH
9			NAV POINT - AN NASIRIYAH AB
10			NAV POINT - DAMASCUS
11			NAV POINT - RAYAK AIRFIELD
BULLS N 35°43'59" E 37°06'17"			

Fuel Plan:

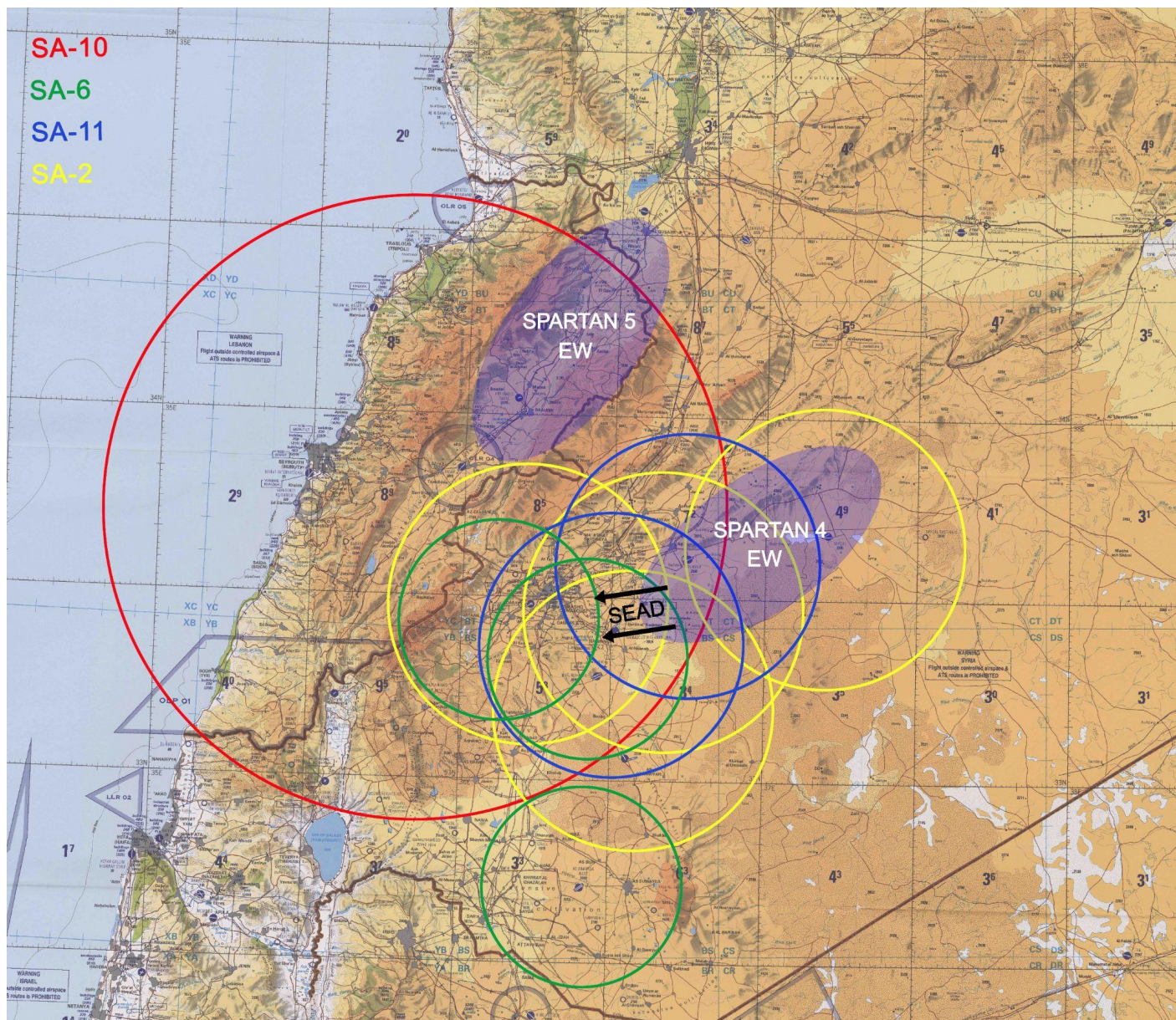
Stage	Notes	Target Fuel lb
Takeoff		12477
Departure	To 25k Ft	11247
WP1	25Kft @ M0.75	10547
WP2	25Kft @ M0.75	9287
WP3	25Kft @ M0.75	7631
AAR	TEXACO + ~ 5500 lb	12500
Bingo = 5900 lb	From target location	
WP5	25Kft @ M0.75	4964
WP6	25Kft @ M0.75	3902
WP7	20Kft @ M0.75	2995
INCIRLIK	LAND	1000



Radio Plan:

Channel	Comm 1	Freq	Comm 2	Freq
1	<i>INK Ground</i>	250.2	<i>INK Ground</i>	128.1
2	<i>Devil 1</i>	260	<i>INK Tower</i>	128.2
3	<i>Agro 2</i>	315.8	<i>INK Departure</i>	128.5
4	<i>Agro 4</i>	317.2	<i>INK Approach</i>	128.3
5	<i>Action 1</i>	321.6	<i>INK Arrival</i>	128.4
6	<i>Action 2</i>	320.2	<i>INK ATIS</i>	128.95
7	<i>Spartan 4</i>	298.0	<i>INK Emergency</i>	128.7
8	<i>Spartan 5</i>	299.4	<i>Sentinel</i>	236.8
9	<i>Colt 2</i>	300.6	<i>Sentinel Actual</i>	240.4
10	<i>Mystic 3</i>	298.8	<i>Texaco</i>	354.6
11	<i>Bear 2</i>	311.1	<i>Shell</i>	331.8
12			<i>Arco</i>	308.2

Threats:





LOW LEVEL THREAT

RESTRICTED AIRSPACE

